

NEW YORK STATE FRESHWATER FISHING

REGULATIONS GUIDE

Regulations in effect April 1, 2022



Department of
Environmental
Conservation

STATE OF NEW YORK

Kathy Hochul, Governor

NYS DEPARTMENT OF ENVIRONMENTAL CONSERVATION

Basil Seggos, Commissioner
Katharine Petronis, Deputy Commissioner, Natural Resources
Jacqueline Lendrum, Director, Division of Fish and Wildlife
Stephen Hurst, Chief, Bureau of Fisheries

How to contact us:

NYS Department of Environmental Conservation
Bureau of Fisheries
625 Broadway
Albany, NY 12233-4753
fwfish@dec.ny.gov
Website: www.dec.ny.gov

ABOUT THIS GUIDE

This guide is a summary that is intended for convenience only. For a complete reference, consult New York State Environmental Conservation Law (ECL) and Title 6 of the Codes, Rules and Regulations of the State of New York (NYCRR). Copies can be reviewed online at:

- public.leginfo.state.ny.us/lawssrch.cgi?NVLWO: for ECL
- www.dec.ny.gov/regs/2494.html for NYCRR

About the Cover:

Roy Isaac proudly holding his new state record white crappie caught from Sleepy Hollow Lake, Greene County on August 21, 2021. Weighing in at 4 lbs. 7 oz. and measuring 19", it broke the previous record by 10oz. Roy entered his state record catch as part of New York's Angler Achievement Awards Program. For more information visit https://www.dec.ny.gov/outdoor/7727.html.

CONTENTS

Using This Guide 3

Statewide Seasons and Limits..... 4

Special Regulations

 Region 1 Special Regulations..... 7

 Region 2 Special Regulations.....10

 Region 3 Special Regulations.....11

 Region 4 Special Regulations.....14

 Tidal Hudson River Regulations.....16

 Border Waters18

 Region 5 Special Regulations..... 20

 Lake Champlain Regulations31

 Region 6 Special Regulations.....34

 Region 7 Special Regulations40

 Region 8 Special Regulations..... 43

 Region 9 Special Regulations.....45

Inland Trout Stream Regulations....47

Finger Lakes and Tributaries Regulations.....57

Great Lakes and Tributaries Regulations..... 60

General Regulations

 Definitions.....68

 Taking and Possession of Fish69

 Methods of Taking Fish71

 Regulations for Harvested Fish..... 74

 Purchase and Sale of Fish75

 Natural Baits Other Than Baitfish76

Baitfish Regulations 77

License Information..... 84

Freshwater Fish ID 86

NYS Angler Achievement Awards Program 89

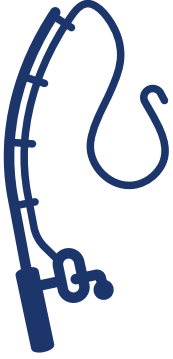
NYS Health Advice on Eating Fish You Catch 92

Environmental Conservation Police Officers 98

Highlights of Changes Back Cover

Special Regulations

Check the following list to see if the water you plan to fish fits into one of the categories. Special regulations often apply to waters in these categories.



Waters with Special Regulations by DEC Region, See pages 7-46

Great Lakes (inc. tributaries to the 1st impassable barrier),
See pages 60-67

Finger Lakes (inc. tributaries to the 1st impassable barrier),
See pages 57-59

Inland Trout Streams (excludes tributaries of the Great Lakes,
Finger Lakes, Lake Champlain, and tidal stream reaches),
See pages 47-56

Hudson River, See pages 16-17

Lake Champlain, See page 31

Border Waters (Delaware and West Branch Delaware Rivers,
Greenwood Lake, Indian Lake), See pages 18-19

Statewide Seasons & Limits



These regulations apply if the water you're fishing
or the species you're fishing for isn't listed in any of
the above sections. (page 4)

Other Things to Consider Before Heading Out

General Regulations



Definitions, Methods of Taking Fish, Purchase, and Sale of Fish, etc.
(pages 68-76)

Baitfish Regulations



Regulations associated with collecting
and using baitfish. (pages 77-83)

Fish Consumption Advisories



If you plan to consume the fish you catch.
(pages 92-97)

If you have any questions or are unsure of any regulations, call or email the nearest DEC Regional Office. Contact information can be found in the Special Regulations section of the guide (pages 7-46).

Statewide Seasons & Limits

- The following statewide species regulations apply to all fresh waters for which special regulations have not been established. See www.dec.ny.gov/outdoor/7894.html for fishing regulations in the Marine and Coastal District (page 68).
- **A person may not fish for a species (not even catch and release) outside of the open season for that species on a given water.**
- New changes indicated in **blue**.

SPECIES	OPEN SEASON ¹	MINIMUM LENGTH ²	DAILY LIMIT ³
Brook Trout in lakes and ponds	April 1–Oct 15	None	5
Brown Trout, Rainbow Trout, Splake in lakes and ponds	All year	None	5 with only 2 longer than 12"
Brook, Brown, and Rainbow Trout and Splake in Inland Trout Streams ⁴	April 1–Oct 15	None	5 with only 2 longer than 12"
	Oct 16–Mar 31	Catch and Release only, Artificial lures only	
Lake Trout	April 1–Oct 15	21"	3
Atlantic Salmon (Landlocked)	All year	15"	3
Coho & Chinook Salmon	See Great Lakes & Tributaries Regulations		
Black Bass (Largemouth and Smallmouth)	June 15–Nov 30	12"	5
	Dec 1–June 14	Catch and Release only, Artificial lures only	
Muskellunge	June 1–Nov 30	40"	1
Northern Pike	May 1–Mar 15	18"	5
Pickereel	May 1–Mar 15	15"	5
Tiger Muskellunge	May 1–Mar 15	30"	1
Walleye	May 1–Mar 15	15"	5
Crappie (Black and White)	All year	10"	25
Yellow Perch	All year	None	50
Sunfish (Bluegill, Pumpkinseed, and Redbreast Sunfish)	All year	None	25

Remember, if the water you plan to fish doesn't have a special regulation, statewide seasons and limits apply. Special regulations for specific waters can be found on pages 7-67.

Statewide Seasons & Limits

SPECIES	OPEN SEASON ¹	MINIMUM LENGTH ²	DAILY LIMIT ³
Lake Whitefish	All year	None	5
Paddlefish, Sauger	Closed	Fishing for (including Catch and Release) or possession prohibited	
Striped Bass (north of George Washington Bridge)	April 1–Nov 30	1 (not less than 18" nor greater than 28")	
American Shad—All inland waters except those listed in special regulations	All year	None	3
	Possession prohibited in Hudson River and tributaries (page 16)		
Hickory Shad	Aug 1–Nov 30	None	5
American Eel	All year	9"	25
All endangered or threatened fish species (page 69)	Fishing for (including Catch and Release) or possession prohibited		
Snakeheads (all species)	Possession prohibited (see page 70)		
All other species (except those listed in special regulations)	All year	None	Any number

¹ **Open Season** means the time during which fish may be legally taken.

² **Minimum length** means the greatest possible length measured from the tip of the fish's snout to the tip of the tail. The mouth may be open or closed and the tail may be spread or compressed in order to achieve the greatest length.

³ **Daily Limit**

- A person may not have in possession, or intentionally kill or injure, fish other than the sizes specified and allowed for that species on a given water. Any fish in a vehicle used to access a given water counts towards the number and sizes of fish in possession.

⁴ **Inland Trout Streams** shall mean all rivers and streams inhabited by trout except as follows:

- Great Lakes tributaries to the 1st impassible barrier;
- Finger Lakes tributaries to the 1st impassible barrier;
- Lake Champlain tributaries to the 1st impassible barrier;
- Tidal stream reaches

GOVERNOR'S MESSAGE

As a Western New York native who grew up along Lake Erie, I know firsthand the value of fisheries like our prized Lake Erie walleye or Lake Ontario Chinook salmon, as well as the proud traditions of sportsmanship and stewardship in New York State. Whether it is through fishing license sales and the more than \$2 billion in overall economic activity generated by fishing each year, or the volunteer efforts to protect and grow healthy fisheries across the state, our anglers are a key part of conservation efforts to sustain the quality of our aquatic resources now and in the future.

I have been fortunate to travel and experience the beauty of just about every corner of the Empire State. While I haven't dropped a line in every lake, river, or stream—at least not yet—I have been fortunate to try my luck at a variety of fisheries along the way and it is always worth the time spent on the water. New York has incredible fish and wildlife resources that offer recreational enjoyment, provide food for our families, contribute to our rich biodiversity, and boost local economies.

For these and many other reasons, I hope the 850,000 freshwater anglers we expect to visit New York's waters this year enjoy the variety of great fishing seasons ahead in 2022, and that each one finds their own reasons for why New York State continues to receive national acclaim for being one of the best places to fish in the nation and the world.

Kathy Hochul, Governor

COMMISSIONER'S MESSAGE

Whether you like fishing a headwater brook trout stream or one of the Finger Lakes, New York is home to a wide array of opportunities to drop a line. Managing these resources responsibly requires sustaining the State's fisheries in a manner that balances the desires of an angling public as diverse as the resource.

To this end, DEC recently reexamined many of our fishing regulations to simplify and clarify special regulations, while still providing the protections needed to sustain our fisheries and help anglers succeed. This multi-year effort significantly streamlined regulations by removing more than 200 special regulations. In addition, we continue to improve the fishing guide so that it's easier to use for all anglers.

In addition to these changes, DEC adjusted statewide sunfish and crappie regulations to improve these fisheries and ensure they are sustainable into the future. Science continues to drive our decision-making, and DEC is embarking on a five-year study of a few select waters to determine if our effective management produces larger sunfish and more unique fishing opportunities.

DEC strives to keep this leisurely pastime as enjoyable and welcoming as possible for both old hands and newcomers. We hope that anglers in 2022 enjoy these regulatory changes and look forward to partnering with the New York angling community to continue to improve our fisheries and the fishing experience.

Basil Seggos, Commissioner

NYS Department of Environmental
Conservation

Region 1 Special Regulations

Heidi O’Riordan, Regional Fisheries Manager

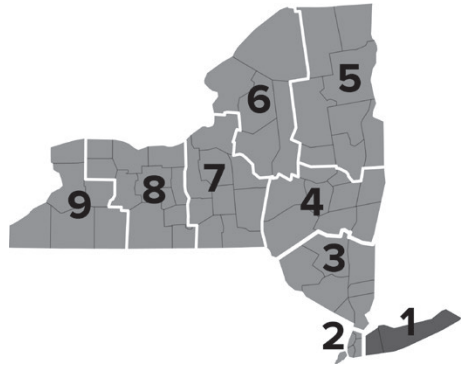
Stony Brook University

50 Circle Rd.

Stony Brook, NY 11790-3409

(631) 444-0280

fwfish1@dec.ny.gov



COUNTIES: NASSAU, SUFFOLK

Water	Regulation
Nassau County	
All lakes and ponds	Black Bass, All year, Catch and Release only
Beaver Brook and tributaries from Beaver Lake upstream to source	Brook Trout, All year, Catch and Release only
Massapequa Creek and tributaries from Massapequa Lake upstream to Northwest Drive	Brook Trout, All year, Catch and Release only
McDonald Pond (Hempstead Lake State Park)	Trout, All year, Daily Limit-5 with no more than 2 longer than 12"
South Pond (Hempstead Lake State Park)	Trout, All year, Daily Limit-5 with no more than 2 longer than 12"
Suffolk County	
Artist Lake	Black Bass, All year, Catch and Release only
Beaverdam Creek and tributaries from mouth upstream to Sunrise Highway	Brook Trout, All year, Catch and Release only
Belmont Lake	Black Bass, All year, Catch and Release only • Trout, All year, Daily Limit-5 with no more than 2 longer than 12"
Blydenburgh Lake	Sunfish, All year, Minimum Length-8", Daily Limit-15
Carmans River and tributaries (Southaven County Park) from Cement Dam upstream to Yaphank Avenue	Brook Trout, All year, Catch and Release only • Brown and Rainbow Trout, April 1 through October 15, Daily Limit-3 with no more than 1 longer than 12" • Fly fishing only
Carmans River and tributaries (Southaven County Park) from Hards Lake upstream to the Cement Dam	Brook Trout, All year, Catch and Release only • Brown and Rainbow Trout, April 1 through October 15, Daily limit-3 with no more than 1 longer than 12"

Region 1 Special Regulations

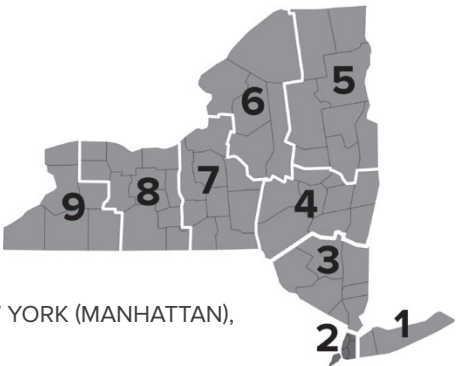
Water	Regulation
Carmans River <i>and tributaries from Bellport Bay upstream to the Hards Lake Dam</i>	Brook Trout, All year, Catch and Release only • Brown and Rainbow Trout, April 1 through October 15, Daily Limit-5 with no more than 2 longer than 12" • Brown and Rainbow Trout, October 16 through March 31, Catch and Release only
Connetquot River <i>and tributaries from the Great South Bay upstream to the dam at Montauk Highway.</i>	Brook Trout, All year, Catch and Release only • Brown and Rainbow Trout, April 1 through October 15, Daily Limit-5 with no more than 2 longer than 12" • Brown and Rainbow Trout, October 16 through March 31, Catch and Release only
Connetquot River <i>within Connetquot River State Park</i>	Park Regulations apply
Deep Pond	Trout, All year, Minimum Length-12", Daily Limit-3
Fort Pond	Walleye, May 1 through March 15, Minimum Length-18", Daily Limit-3
Hards Lake	Brook Trout, All year, Catch and Release only • Rainbow and Brown Trout, April 1 through October 15, Daily Limit-3 with no more than 1 longer than 12"
Lake Ronkonkoma	Walleye, May 1 through March 15, Minimum Length-18", Daily Limit-3
Laurel Lake	Trout, All year, Minimum Length-12", Daily Limit-3
Mud Creek <i>and tributaries from Patchogue Bay upstream to Sills Road</i>	Brook Trout, All year, Catch and Release only
Nissequogue River <i>from Long Island Sound upstream to the dam at White's Pool</i>	Brook Trout, All year, Catch and Release only • Brown and Rainbow Trout, April 1 through October 15, Daily Limit-5 with no more than 2 longer than 12" • Brown and Rainbow Trout, October 16 through March 31, Catch and Release only
Nissequogue River <i>within Caleb Smith State Park</i>	Park Regulations apply
Patchogue River <i>and tributaries from Patchogue Bay upstream to source</i>	Brook Trout, All year, Catch and Release only • Brown and Rainbow Trout, April 1 through October 15, Daily Limit-5 with no more than 2 longer than 12" • Brown and Rainbow Trout, October 16 through March 31, Catch and Release only
Rattlesnake Creek <i>from the confluence with Connetquot River upstream to the dam at Sunrise Highway</i>	Brook Trout, All year, Catch and Release only • Brown and Rainbow Trout, April 1 through October 15, Daily Limit-5 with no more than 2 longer than 12" • Brown and Rainbow Trout, October 16 through March 31, Catch and Release only

Region 1 Special Regulations

Water	Regulation
Swan River and tributaries from Patchogue Bay upstream to Southaven Avenue	Brook Trout, All year, Catch and Release only • Brown and Rainbow Trout, April 1 through October 15, Daily Limit-5 with no more than 2 longer than 12" • Brown and Rainbow Trout, October 16 through March 31, Catch and Release only
Tributaries to Blydenburgh Lake	Brook Trout, All year, Catch and Release only
Tuthills Creek and tributaries from Patchogue Bay upstream to Waverly Ave	Brook Trout, All year, Catch and Release only

Region 2 Special Regulations

Melissa Cohen, Regional Fisheries Manager
1 Hunters Point Plaza
47-40 21st Street
Long Island City, NY 11101-5407
(718) 482-4922
fwfish2@dec.ny.gov

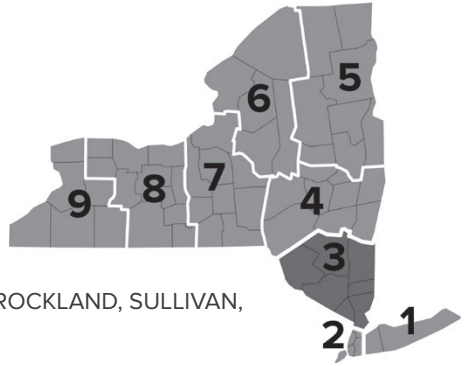


COUNTIES: BRONX, KINGS (BROOKLYN), NEW YORK (MANHATTAN), QUEENS, RICHMOND (STATEN ISLAND)

Water	Regulation
Bronx	
Indian Lake (Crotona Park)	All fish, All year, Catch and Release only
Van Cortlandt Lake	
Brooklyn	
Prospect Park Lake	All fish, All year, Catch and Release only
Manhattan	
Central Park – all waters	All fish, All year, Catch and Release only
Queens	
Baisley Pond	All fish, All year, Catch and Release only
Kissena Lake	
Meadow Lake	
Oakland Lake	
Willow Lake	
Staten Island	
Brooks Lake	All fish, All year, Catch and Release only
Clove Lake	
Silver Lake	
Willowbrook Lake	

Region 3 Special Regulations

Ryan Coulter, Senior Aquatic Biologist
 21 S. Putt Corners Rd.
 New Paltz, NY 12561-1696
 (845) 256-3161
fwfish3@dec.ny.gov



COUNTIES: DUTCHESS, ORANGE, PUTNAM, ROCKLAND, SULLIVAN,
 ULSTER, WESTCHESTER

Water	Regulation
Waterbodies found in a different section of the guide	
Delaware River	See Border Waters Regulations (Page 18)
Greenwood Lake	See Border Waters Regulations (Page 19)
Hudson River <i>from the Troy Dam downstream and all tributaries in this section to the first impassible barrier by fish</i>	See Tidal Hudson River Regulations (Page 16)
Indian Lake	See Border Waters Regulations (Page 19)
Inland Trout Streams	See Inland Trout Stream Regulations (Page 47)
Orange County	
Rio Reservoir	Walleye, May 1 through March 15, Minimum Length-18", Daily Limit-3
Sterling Lake	Use or possession of baitfish is prohibited • Lake Trout, April 1 through October 15, Minimum Length-21", Daily Limit-1
Putnam County	
Boyd Corners Reservoir	Walleye, May 1 through March 15, Minimum Length-18", Daily Limit-3 • NYCDEP Access Permit required.
Croton Falls Reservoir	Trout, All year, Minimum Length-18", Daily Limit-1 • NYCDEP Access Permit required.
East Branch Reservoir	Walleye, May 1 through March 15, Minimum Length-18", Daily Limit-3 • NYCDEP Access Permit required.
Lake Gilead	Lake Trout, All year, Minimum Length-21", Daily Limit-3 • NYCDEP Access Permit required.
Lake Gleneida	Lake Trout, All year, Minimum Length-21", Daily Limit-3 • NYCDEP Access Permit required.

Region 3 Special Regulations

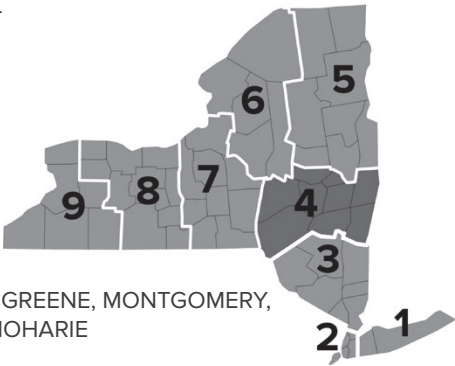
Water	Regulation
West Branch Reservoir	Atlantic Salmon, All year, Minimum Length-18", Daily Limit-1 • Lake Trout, All year, Minimum Length-21", Daily Limit-3 • NYCDEP Access Permit required.
White Pond	Walleye, May 1 through March 15, Minimum Length-18", Daily Limit-3
Rockland County	
Lake Welch	Sunfish, All year, Minimum Length-8", Daily Limit-15
Sullivan County	
Crystal Lake	Use or possession of baitfish is prohibited • Ice fishing prohibited • Artificial lures only • Trout, April 1 through September 30, Minimum Length-12", Daily Limit-2, Artificial lures only
Hodge Pond	Use or possession of baitfish is prohibited • Ice fishing prohibited • Artificial lures only • Trout, April 1 through September 30, Minimum Length-12", Daily Limit-2, Artificial lures only
Mongaup Pond	Use or possession of baitfish is prohibited
Mongaup Creek <i>from, confluence with Willowemoc upstream to Mongaup Pond</i>	Use and possession of baitfish prohibited • see Inland Trout Stream Regulations
Neversink Reservoir	Ice fishing prohibited • Atlantic Salmon, April 1 through October 15, Minimum Length-15", Daily Limit-3 • Smelt, Use or possession is prohibited • NYCDEP Access Permit required.
Rio Reservoir	Walleye, May 1 through March 15, Minimum Length-18", Daily Limit-3
Rondout Reservoir	Ice fishing prohibited • Lake Trout, April 1 through November 30, Minimum Length-18", Daily Limit-3 • NYCDEP Access Permit required.
Swinging Bridge Reservoir	Walleye, May 1 through March 15, Minimum Length-18", Daily Limit-3
Ulster County	
Alder Lake	Use or possession of baitfish is prohibited • Ice fishing prohibited • Artificial lures only • Trout, April 1 through September 30, Minimum Length-12", Daily Limit-2, Artificial lures only
Ashokan Reservoir	Ice fishing prohibited • Walleye, May 1 through March 15, Minimum Length-18", Daily Limit-3 • NYCDEP Access Permit required.
Echo Lake	Use or possession of baitfish is prohibited • Ice fishing prohibited • Artificial lures only • Trout, April 1 through September 30, Minimum Length-12", Daily Limit-2, Artificial lures only

Region 3 Special Regulations

Water	Regulation
Rondout Reservoir	Ice fishing prohibited • Lake Trout, April 1 through November 30, Minimum Length-18", Daily Limit-3 • NYCDEP Access Permit required.
Westchester County	
Croton River <i>from Muscoot Reservoir upstream to the confluence with the East and West Branches of the Croton River</i>	Trout, All year, Daily Limit-5 with no more than 2 longer than 12"
Kensico Reservoir	Ice fishing prohibited • Lake Trout, All year, Minimum Length-18", Daily Limit-3 • NYCDEP Access Permit required.
New Croton Reservoir	Ice fishing prohibited • NYCDEP Access Permit required.
Titicus Reservoir	Walleye, May 1 through March 15, Minimum Length-18", Daily Limit-3 • NYCDEP Access Permit required.

Region 4 Special Regulations

Chris VanMaaren, Regional Fisheries Manager
65561 State Highway 10
Stamford, NY 12167-9503
(607) 652-7366
fwfish4@dec.ny.gov



COUNTIES: ALBANY, COLUMBIA, DELAWARE, GREENE, MONTGOMERY, OTSEGO, RENSSELAER, SCHENECTADY, SCHOHARIE

Water	Regulation
Waterbodies found in a different section of the guide	
Delaware River	See Border Waters Regulations (Page 18)
Hudson River from the Troy Dam downstream and all tributaries in this section to the first impassible barrier by fish	See Tidal Hudson River Regulations (Page 16)
Inland Trout Streams	See Inland Trout Stream Regulations (Page 47)
West Branch Delaware River (NY/PA Border section)	See Border Waters Regulations (Page 18)
Albany County	
Hudson River from the Troy Dam upstream to Bakers Falls in the Village of Hudson Falls and tributaries in this section to the 1 st barrier impassable by fish	All Species, All year, Catch and Release. All fish shall be returned to the water immediately, except bait fish may be collected and/or possessed for use as bait while fishing only. ● Bowfishing is prohibited
Mohawk River from the confluence with the Hudson River upstream to the Rte. 32 bridge	All Species, All year, Catch and Release. All fish shall be returned to the water immediately, except bait fish may be collected and/or possessed for use as bait while fishing only. ● Bowfishing is prohibited
Columbia County	
Lake Taghkanic	Walleye, May 1 through March 15, Minimum Length-18", Daily Limit-3
Delaware County	
Cannonsville Reservoir	Ice fishing prohibited ● NYCDEP Access Permit required.
Huggins Lake	Ice fishing prohibited ● Use or possession of baitfish is prohibited ● Trout, April 1 through September 30, Minimum Length-12", Daily Limit-2, Artificial lures only
Mud Pond (Town of Colchester)	Ice fishing prohibited

Region 4 Special Regulations

Water	Regulation
Pepacton Reservoir	Ice fishing prohibited • Trout, April 1 through October 15, Minimum Length-15", Daily Limit-2 fish, with only 1 over 21" • NYCDEP Access Permit required.
Schoharie Reservoir	Ice fishing prohibited
Trout Pond (<i>Cables Lake</i>)	Ice fishing prohibited • Use or possession of baitfish is prohibited • Trout, April 1 through September 30, Minimum Length-12", Daily Limit-2, Artificial lures only
Greene County	
Schoharie Reservoir	Ice fishing prohibited • NYCDEP Access Permit required.
Otsego County	
Canadarago Lake	Walleye, May 1 through March 15, Minimum Length-18", Daily Limit-3 • Yellow Perch, All year, Minimum Length-None, Daily Limit-25 • Sunfish, All year, Minimum Length-8", Daily Limit-15
Goodyear Lake	Yellow Perch, All year, Minimum Length-None, Daily Limit-25 • Sunfish, All year, Minimum Length-8", Daily Limit-15
Otsego Lake	Lake Trout, All year, Minimum Length-23", Daily Limit-1
Rensselaer County	
Tomhannock Reservoir	Ice Fishing Season January 1 through March 15, daylight hours only • City of Troy Access Permit required.
Schoharie County	
Schoharie Reservoir	Ice fishing prohibited • NYCDEP Access Permit required.

Tidal Hudson River Regulations

Gregg Kenney, Marine Biologist
Hudson River Fisheries Unit
21 South Putt Corners Road, New Paltz, NY 12561
(845) 256-3199, HudsonRiverFish@dec.ny.gov

TIDAL HUDSON RIVER REGULATIONS	
Statewide Seasons and Limits (page 4) apply, except as listed below:	
Location	Regulation
Tidal Hudson River and all tributaries to the first impassible barrier by fish	Black Bass, June 15 through November 30, Minimum Length-15", Daily Limit-5 • Fishing for Black Bass (including catch and release" is prohibited outside of the open season.
	American Shad, Fishing for or possession prohibited
Tidal Hudson River north of the George Washington Bridge and all tributaries upstream to the 1st impassible barrier to fish	Striped Bass*, April 1–Nov 30, Daily Limit-1 (not less than 18" nor greater than 28")
From the Battery to the Troy Dam , and all tributaries upstream to the 1 st barrier impassable by fish	American Eel, All year, Minimum Length-9"-14", only may be possessed for bait, Daily Limit-25 *No eels may be possessed for food

* Non-offset (inline) circle hooks must be used when recreationally fishing for striped bass using bait as defined on page 68. Exemption: Circle hooks are not required when fishing with an artificial lure, whether or not they are tipped with bait as previously defined.

Taking of anadromous river herring with personal use nets

- ▶ No person shall take anadromous river herring with a net within Hudson River tributaries and embayments. Prior to entering a Hudson River tributary or embayment, all personal use nets must be stowed in a secured container on deck or in a container below deck.
- ▶ No person shall take anadromous river herring from the Hudson River:
 - with more than one net when taking with a scap or dip net;
 - with a dip net exceeding 14 inches in diameter if it is round form or exceeding 13 inches by 13 inches if it is square form;
 - with a scap or lift net exceeding 16 square feet;
 - with a seine net exceeding 36 square feet; or a cast net exceeding 10 feet in diameter.

Tidal Hudson River Regulations

HUDSON RIVER ANADROMOUS RIVER HERRING REGULATIONS

Location	Open Season	Daily Possession Limit	Manner of Taking
Hudson River tributaries and embayments , including <i>Mohawk River (see the Mohawk River exception on page 14).</i>	Mar 15– June 15	10 per angler, OR a maximum boat limit of 50 per day for a group of boat anglers, whichever is lower	Angling only
Main stem of the Hudson River from Lock 1 near Waterford , south to the <i>George Washington Bridge</i>	Mar 15– June 15	10 per angler, OR a maximum boat limit of 50 per day for a group of boat anglers, whichever is lower	Angling or by personal use nets

Border Waters

DELAWARE RIVER & WEST BRANCH DELAWARE RIVER (NY/PA BORDER WATER)			
Species	Open Season	Minimum Length	Daily Limit
Trout	April 1 through October 15	None	1
	October 16 through March 31	Catch and release only, Artificial Lures only	
Black bass	First Saturday after June 11 through the Friday preceding first Saturday after April 11	12"	5
	First Saturday after April 11 through Friday preceding first Saturday after June 11	Catch and release only	
Walleye	1st Saturday in May through March 14	18"	3
Muskellunge and Tiger Muskellunge	All year	40"	1
Pickereel	All year	12"	5
Striped bass	All year	28" to 35"	1
Anadromous River Herring (Alewife and Blueback Herring)	Possession prohibited		

GREENWOOD LAKE (NEW YORK/NEW JERSEY BORDER WATER)

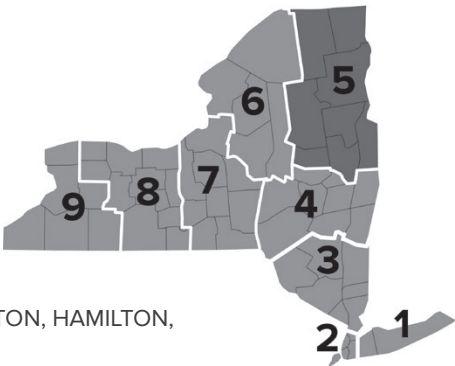
Species	Open Season	Minimum Length	Daily Limit
Black bass	Third Saturday in June through November 30	12"	5
	December 1 through the Friday preceding the third Saturday in June	Catch and release only	
Pickereel	All year	15"	5
Muskellunge and Tiger Muskellunge	All year	44"	1
Walleye	May 1 through last day of February	18"	3
Channel Catfish	All year	12"	5
Crappie	All year	8"	10

INDIAN LAKE (NEW YORK/CONNECTICUT BORDER WATER)

Species	Open Season	Minimum Length	Daily Limit
Black Bass	3rd Saturday in April (6 AM) through November 30	12"	6
Pickereel	3rd Saturday in April (6 AM) through March 31	15"	6
Fishing is prohibited from April 1 through 6 AM on the 3rd Saturday in April			

Region 5 Special Regulations

Rob Fiorentino, Regional Fisheries Manager
1115 State Rte. 86
P.O. Box 296
Ray Brook, NY 12977-0296
(518) 897-1200
fwfish5@dec.ny.gov



COUNTIES: CLINTON, ESSEX, FRANKLIN, FULTON, HAMILTON, SARATOGA, WARREN, WASHINGTON

Water	Regulation
Waterbodies found in a different section of the guide	
Inland Trout Streams	See Inland Trout Stream Regulations (Page 47)
Lake Champlain and tributaries upstream to the 1 st impassible barrier to fish	See Lake Champlain and Tributary Regulations (Page 31)
Clinton County	
All waters, except as prohibited below	Ice fishing permitted
Chazy Lake	Lake Trout, All year, Minimum Length-21", Daily Limit-3
Cranberry Pond (Town of Black Brook)	Ice fishing prohibited
Great Chazy River from Rte. 9B at Coopersville upstream to Perry Mills Dam	Fishing is prohibited from March 16 through April 30
Mud Pond (Town of Black Brook)	Ice fishing prohibited
Mud Pond (Town of Black Brook-two miles southwest of Riverview)	Ice fishing prohibited
Mud Pond (Town of Dannemora)	Ice fishing prohibited
Essex County	
All waters inhabited by trout, except as permitted below	Ice fishing prohibited
Bigsby Pond	Fishing prohibited October 16 through March 31 • Ice Fishing Permitted. Maximum of 3 ice fishing lines allowed • Use or possession of baitfish is prohibited • Lake Trout, April 1 through October 15, Minimum Length-15", Daily Limit-3

Region 5 Special Regulations

Water	Regulation
Connery Pond (<i>Town of North Elba</i>)	Ice fishing permitted
Copperas Pond	Fishing prohibited October 16 through March 31 • Ice Fishing Permitted. Maximum of 3 ice fishing lines allowed • Use or possession of baitfish is prohibited • Lake Trout, April 1 through October 15, Minimum Length-15", Daily Limit-3
Crane Pond	Ice fishing permitted • Use or possession of baitfish is prohibited • Lake Trout, All year, Minimum Length-15", Daily Limit-3
Eagle Lake	Ice fishing permitted
First Lake of Essex Chain	Use or possession of baitfish is prohibited • Lake Trout, April 1 through October 15, Minimum Length-15", Daily Limit-3
Harris Lake	Ice fishing permitted • Walleye, May 1 through March 15, Minimum Length-18", Daily Limit-3
Lake George	Ice fishing permitted • Atlantic Salmon, All year, Minimum Length-18", Daily Limit-2 • Lake Trout, All year, Minimum Length-23", Daily Limit-2 • Smelt, May 16 through March 31, Minimum Length-None, Daily Limit-25 • Smelt, April 1 through May 15, Use or possession prohibited • Dip netting for smelt is prohibited
Lake George Tributaries <i>from Lake George upstream to the 1st barrier impassable by fish</i>	Fishing is prohibited between 10 PM and 5 AM from April 1 through May 15 • Smelt, May 16 through March 31, Minimum Length-None, Daily Limit-25 • Smelt, April 1 through May 15, Use or possession is prohibited • Dip netting for smelt is prohibited
Lake Placid	Lake Trout, April 1 through October 15, Minimum Length-15", Daily Limit-3
Lower Cascade Lake	Round Whitefish, Possession prohibited
Mirror Lake	Lake Trout, April 1 through October 15, Minimum Length-15", Daily Limit-3
Moose Pond (<i>Town of St. Armand</i>)	Lake Trout, April 1 through October 15, Minimum Length-15", Daily Limit-3
Paradox Lake	Ice fishing permitted • Lake Trout, All year, Minimum Length-21", Daily Limit-3
Pharaoh Lake	Use or possession of baitfish is prohibited • Lake Trout, April 1 through October 15, Minimum Length-15", Daily Limit-3
Putnam Pond	Ice fishing permitted • Walleye, May 1 through March 15, Minimum Length-18", Daily Limit-3

Region 5 Special Regulations

Water	Regulation
Schroon Lake	Ice fishing permitted • Lake Trout, All year, Minimum Length-18", Daily Limit-3
Schroon River <i>from Schroon Lake upstream to Alder Meadow Rd.</i>	Ice fishing permitted • Lake Trout, All year, Minimum Length-18", Daily Limit-3 • Brown Trout and Rainbow Trout, All year, Daily Limit-5 with no more than 2 longer than 12"
Upper Cascade Lake	Round Whitefish, Possession prohibited
Franklin County	
All waters inhabited by trout, <i>except as permitted below</i>	Ice fishing prohibited
All waters	Black Bass, June 15 through November 30, Minimum Length-12", Daily Limit-5 • Fishing for black bass (including catch & release) is prohibited outside of the open season.
Big Fish Pond	Lake Trout, April 1 through October 15, Minimum Length-15", Daily Limit-3
Kiawassa Lake	Ice fishing permitted • Walleye, May 1 through March 15, Minimum Length-18", Daily Limit-3
Lake Clear	Ice fishing permitted
Lake Colby	Ice fishing permitted
Lake Kushaquaa	Ice fishing permitted • Lake Trout, All year, Minimum Length-21", Daily Limit-3
Little Clear Pond and Tributaries	Fishing prohibited
Little Fish Pond	Lake Trout, April 1 through October 15, Minimum Length-15", Daily Limit-3
Little Green Pond <i>and Tributaries</i>	Fishing prohibited
Little Wolf Pond	Ice fishing permitted • Walleye, May 1 through March 15, Minimum Length-18", Daily Limit-3
Meacham Lake	Ice fishing permitted
Mountain Pond <i>(Town of Brighton)</i>	Trout, April 1–Nov 30, Catch and Release only, Artificial lures only
Rollins Pond	Ice fishing permitted • Lake Trout, All year, Minimum Length-21", Daily Limit-3
Saranac River <i>from Hough Brook at Union Falls Flow upstream to Franklin Falls Flow Dam</i>	Fishing is prohibited from March 16 through April 30
St. Lawrence River	See Great Lakes & Tributaries Regulations.

Region 5 Special Regulations

Water	Regulation
St. Regis Falls Impoundment	Ice fishing permitted • Walleye, May 1 through March 15, Minimum Length-18", Daily Limit-3
St. Regis Pond	Lake Trout, April 1 through October 15, Minimum Length-15", Daily Limit-3
Tupper Lake	Ice fishing permitted • Lake Trout, All year, Minimum Length-21", Daily Limit-3
Upper Saranac Lake	Ice Fishing Permitted Maximum of 3 ice-fishing lines allowed • Lake Trout, April 1 through October 15, Minimum Length-23", Daily Limit-3
Fulton County	
All waters inhabited by trout, <i>except as permitted below</i>	Ice fishing prohibited
Canada Lake	Ice fishing permitted • Lake Trout, All year, Minimum Length-21", Daily Limit-3
East Caroga Lake	Ice fishing permitted
Great Sacandaga Lake	Ice fishing permitted
Great Sacandaga Lake Tributaries <i>(except Sacandaga River) from the stream mouth upstream to the 1st road bridge</i>	Fishing is prohibited from March 16 through April 30
Green Lake	Ice fishing permitted • Lake Trout, All year, Minimum Length-21", Daily Limit-3
Kyser Lake	Ice fishing permitted
Lily Lake	Ice fishing permitted
Northville Pond	Ice fishing permitted
Sacandaga River <i>from Bridge St. in Northville upstream to the first crossing of Rte. 30</i>	Fishing is prohibited from March 16 through April 30
West Caroga Lake	Ice fishing permitted
West Lake	Ice fishing permitted • Lake Trout, All year, Minimum Length-21", Daily Limit-3
Hamilton County	
All waters inhabited by trout, <i>except as permitted below</i>	Ice fishing prohibited
All waters <i>except Fourth Lake of Fulton Chain</i>	Black Bass, June 15 through November 30, Minimum Length-12", Daily Limit-5 • Fishing for black bass (including catch & release) is prohibited outside of the open season.
Blue Mountain Lake	Ice fishing permitted • Lake Trout, All year, Minimum Length-21", Daily Limit-2 • Brook Trout, All year, Minimum Length-None, Daily Limit-5

Region 5 Special Regulations

Water	Regulation
Eagle Lake	Ice fishing permitted • Lake Trout, All year, Minimum Length-21", Daily Limit-2
Fawn Lake <i>(Town of Lake Pleasant)</i>	Fishing prohibited October 16 through March 31 • Ice Fishing Permitted. Maximum of 3 ice-fishing lines allowed • Lake Trout, April 1 through October 15, Minimum Length-18", Daily Limit-3
First Lake of Essex Chain	Use or possession of baitfish is prohibited • Lake Trout, April 1 through October 15, Minimum Length-15", Daily Limit-3
Forked Lake	Ice fishing permitted • Lake Trout, All year, Minimum Length-21", Daily Limit-2
Fourth Lake of Fulton Chain	Ice fishing permitted • Lake Trout, All year, Minimum Length-21", Daily Limit-3 • Black Bass - Statewide Regulations Apply, see page 4 • Brook Trout, All year, Minimum Length-9", Daily Limit-5
Gilman Lake	Ice fishing permitted • Lake Trout, All year, Minimum Length-21", Daily Limit-2
Indian Lake <i>(Town of Indian Lake)</i>	Ice fishing permitted • Lake Trout, All year, Minimum Length-21", Daily Limit-2
Lake Abanakee <i>(Town of Indian Lake)</i>	Ice fishing permitted
Lake Eaton	Ice fishing permitted • Lake Trout, All year, Minimum Length-21", Daily Limit-2
Lake Lila	Use or possession of baitfish is prohibited • Lake Trout, April 1 through October 15, Minimum Length-15", Daily Limit-3
Lake Pleasant	Ice fishing permitted • Walleye, May 1 through March 15, Minimum Length-18", Daily Limit-3
Lake Pleasant Outlet <i>from Lake Pleasant downstream to the mouth of the Kunjamuk River</i>	Fishing is prohibited from March 16 through April 30
Lake Pleasant Tributaries	Fishing is prohibited from March 16 through April 30 • Walleye, May 1 through March 15, Minimum Length-18", Daily Limit-3
Lewey Lake	Ice fishing permitted • Lake Trout, All year, Minimum Length-21", Daily Limit-2
Limekiln Lake	Ice fishing permitted • Brook Trout, All year, Minimum Length-None, Daily Limit-5
Little Tupper Lake	Trout, April 1 through October 15, Catch and Release only, Artificial lures only
Piseco Lake	Ice fishing permitted • Lake Trout, All year, Minimum Length-21", Daily Limit-2

Region 5 Special Regulations

Water	Regulation
Raquette Lake	Ice fishing permitted • Lake Trout, All year, Minimum Length-21", Daily Limit-2 • Brook Trout, All year, Minimum Length-None, Daily Limit-5
Rock Pond	Trout, April 1 through October 15, Catch and Release only, Artificial lures only
Round Lake <i>to the boundary with Little Tupper Lake</i>	Brook Trout, April 1–Oct 15, Minimum Length-12", Daily Limit-3, Artificial lures only
Sacandaga Lake	Ice fishing permitted • Walleye, May 1 through March 15, Minimum Length-18", Daily Limit-3
Sacandaga Lake Outlet	Fishing is prohibited from March 16 through April 30 • Walleye, May 1 through March 15, Minimum Length-18", Daily Limit-3
Sacandaga Lake Tributaries	Fishing is prohibited from March 16 through April 30 • Walleye, May 1 through March 15, Minimum Length-18", Daily Limit-3
Sacandaga River <i>from Bridge St. in Northville upstream to the first crossing of Rte. 30</i>	Fishing is prohibited from March 16 through April 30
Sagamore Lake	Lake Trout, April 1 through October 15, Minimum Length-18", Daily Limit-3
Seventh Lake of Fulton Chain	Ice fishing permitted • Lake Trout, All year, Minimum Length-18", Daily Limit-3
Sixth Lake of Fulton Chain	Ice fishing permitted • Lake Trout, All year, Minimum Length-18", Daily Limit-3
South Pond	Ice fishing permitted • Lake Trout, All year, Minimum Length-21", Daily Limit-2
Utowana Lake	Ice fishing permitted • Lake Trout, All year, Minimum Length-21", Daily Limit-2
Saratoga County	
All waters , <i>except as prohibited below</i>	Ice fishing permitted
Fish Creek <i>from Saratoga Lake downstream to the old railroad crossing between Staffords and Bryants bridges</i>	Sunfish, All year, Minimum Length-8", Daily Limit-15
Great Sacandaga Lake	Ice fishing permitted
Great Sacandaga Lake Tributaries <i>(Except Sacandaga River) from the stream mouth upstream to 1st road bridge</i>	Fishing is prohibited from March 16 through April 30

Region 5 Special Regulations

Water	Regulation
Hudson River from Troy Dam upstream to Bakers Falls in the Village of Hudson Falls and tributaries in this section to the 1st barrier impassable by fish	All Species, All year, Catch and Release. All fish shall be returned to the water immediately, except bait fish may be collected and/or possessed for use as bait while fishing only • Bowfishing is prohibited
Kayaderoseras Creek from Saratoga Lake upstream to the 1st railroad bridge	Fishing is prohibited from March 16 through April 30
Mohawk River from the confluence with Hudson River upstream to the Rte. 32 bridge	All Species, All year, Catch and Release. All fish shall be returned to the water immediately, except bait fish may be collected and/or possessed for use as bait while fishing only • Bowfishing is prohibited
Mohawk River from Lock 2 to Guard Gate 2 (Waterford Flight)	Use or possession of alewife or blueback herring is prohibited
Saratoga Lake	Sunfish, All year, Minimum Length-8", Daily Limit-15
Warren County	
All waters inhabited by trout, except as permitted below	Ice fishing prohibited
Brant Lake	Ice fishing permitted
Brant Lake Mill Pond	Ice fishing permitted
Brant Lake Outlet	Ice fishing permitted • Rainbow and Brown Trout, All year, Daily Limit-5 with no more than 2 longer than 12"
Glen Lake	Ice fishing permitted
Hour Pond	Trout, April 1–Oct 15, Minimum Length-12", Daily Limit-3, Artificial lures only
Jabe Pond	Trout, April 1–Oct 15, Minimum Length-12", Daily Limit-3, Artificial lures only
Lake George	Ice fishing permitted • Atlantic Salmon, All year, Minimum Length-18", Daily Limit-2 • Lake Trout, All year, Minimum Length-23", Daily Limit-2 • Smelt, May 16 through March 31, Minimum Length-None, Daily Limit-25 • Smelt, April 1 through May 15, Use or possession prohibited • Dip netting for smelt is prohibited
Lake George Tributaries from Lake George upstream to the 1st barrier impassable by fish	Fishing is prohibited between 10 PM and 5 AM from April 1 through May 15 • Smelt, May 16 through March 31, Minimum Length-None, Daily Limit-25 • Smelt, April 1 through May 15, Use or possession is prohibited • Dip netting for smelt is prohibited
Lake Luzerne	Ice fishing permitted
Little Jabe Pond	Trout, April 1–Oct 15, Minimum Length-12", Daily Limit-3, Artificial lures only
Palmer Pond	Trout, April 1–Nov 30, Minimum Length-None, Daily Limit-5

Region 5 Special Regulations

Water	Regulation
Peaked Mountain Pond	Trout, April 1–Oct 15, Minimum Length-12", Daily Limit-3, Artificial lures only
Schroon Lake	Ice fishing permitted • Lake Trout, All year, Minimum Length-18", Daily Limit-3
Schroon River <i>from Starbuckville Dam upstream to Schroon Lake</i>	Ice fishing permitted • Brown Trout and Rainbow Trout, All year, Daily Limit-5 with no more than 2 longer than 12" • Lake Trout, All year, Minimum Length-18", Daily Limit-3
Thirteenth Lake	Use or possession of baitfish is prohibited
Thirteenth Lake Outlet <i>from the dam at the 13th Lake Road upstream to Thirteenth Lake</i>	Use or possession of baitfish is prohibited
Trout Lake	Ice fishing permitted
Washington County	
All waters inhabited by trout, <i>except as permitted below</i>	Ice fishing prohibited
Dead Lake	Ice fishing permitted
Hudson River <i>from the Troy Dam upstream to Bakers Falls in the Village of Hudson Falls and tributaries in this section to the 1st barrier impassable by fish</i>	All Species, All year, Catch and Release. All fish shall be returned to the water immediately, except bait fish may be collected and/or possessed for use as bait while fishing only. • Bowfishing is prohibited
Lake George	Ice fishing permitted • Atlantic Salmon, All year, Minimum Length-18", Daily Limit-2 • Lake Trout, All year, Minimum Length-23", Daily Limit-2 • Smelt, May 16 through March 31, Minimum Length-None, Daily Limit-25 • Smelt, April 1 through May 15, Use or possession prohibited • Dip netting for smelt is prohibited
Lake George Tributaries <i>from Lake George upstream to the 1st barrier impassable by fish</i>	Fishing is prohibited between 10 PM and 5 AM from April 1 through May 15 • Smelt, May 16 through March 31, Minimum Length-None, Daily Limit-25 • Smelt, April 1 through May 15, Use or possession is prohibited • Dip netting for smelt is prohibited

Region 5 Special Regulations

BAITFISH PROHIBITED WATERS

Use of baitfish is prohibited in the following waters and units:

CLINTON COUNTY

TOWN OF BLACK BROOK

- Cranberry Pond
- Mud Pond (*2 miles southwest of Riverview*)

TOWN OF DANNEMORA

- Mud Pond

ESSEX COUNTY

- Essex Chain Lakes Primitive Area
- Giant Mountain Wilderness
- High Peaks Wilderness
- Hoffman Notch Wilderness
- Hudson Gorge Wilderness Area (*except Hudson River*)
- McKenzie Mountain Wilderness (*except West Branch of Ausable River*)
- Pharaoh Lake Wilderness
- Pine Lake Primitive Area
- Sentinel Range Wilderness (*except East Branch of Ausable River*)
- Tahawus Primitive Area

TOWN OF CROWN POINT

- Bloody Pond

TOWN OF JAY

- Clements Pond

TOWN OF MINERVA

- Barnes Pond
- Big Sherman Pond
- Black Pond
- Center Pond
- Clear Pond
- Deer Pond
- Hewitt Pond
- Huntley Pond
- Little Rankin Pond
- Little Sherman Pond
- Nate Pond
- Rankin Pond
- Stony Pond
- Twentyninth Pond

TOWN OF NEWCOMB

- Beaver Pond (*south of Lake Andrew*)
- Chub Pond
- Mud Pond (*north of Clear Pond*)
- Newcomb Lake (*including Upper and Lower Duck Hole*)
- Unnamed Pond (*north of LeClaire Brook*)

TOWN OF NORTH ELBA

- Big Cherrypatch Pond
- Cameras Pond
- McKenzie Pond
- Tom Peck Pond

TOWN OF NORTH HUDSON

- Bass Lake
- Bloody Pond
- Boreas Ponds
- Challis Pond
- Courtney Pond
- Deer Pond
- Howard Pond
- Moose Mountain Pond
- Triangle Pond
- Labier Flow
- Lower Twin Pond
- Upper Twin Pond

TOWN OF ST. ARMAND

- Moose Pond

TOWN OF SCHROON

- Cotters Pond

TOWN OF WILLMINGTON

- Morgan Pond (*Copper Kill*)

TOWN OF MORIAH

- Goose Puddle
- Trout Pond

FRANKLIN COUNTY

- St. Regis Canoe Area
- High Peaks Wilderness (*except Raquette River and Saranac River*)
- Madawaska Flow-Quebec Brook Primitive Area

TOWN OF BELLMONT

- Drain Pond

TOWN OF BRIGHTON

- Barnum Pond
- Black Pond (*on Visitors Interpretive Center Property*)
- Long Pond (*north of Black Pond*)
- Loon Pond
- Lost Pond (*0.4 mile southwest of Mountain Pond*)
- Mountain Pond
- Slush Pond
- Star Mountain Ponds (2)
- Upper Spectacle Pond

TOWN OF DUANE

- Buck Pond
- Clear Pond
- Debar Pond
- Skiff Pond
- Winnebago Pond

Region 5 Special Regulations

TOWN OF FRANKLIN

- Chub Pond
- Fishhole Pond
- Hope Pond
- Little Hope Pond
- No Hope Pond (300 feet north of Hope Pond)
- Mountain Pond (1.6 miles west of Lake Kusahaqua)

TOWN OF HARRIETSTOWN

- Bear Pond
- Meadow Pond (0.5 miles northwest of Lake Clear)
- Panther Pond
- Porkchop Pond (0.6 miles east of Upper Saranac Lake)
- St. Germain Pond (0.5 miles north of Lake Clear)

TOWN OF MALONE

- Malone Village Ice Pond

TOWN OF TUPPER LAKE

- Rag Pond (200 feet north of West Pine Pond)
- West Pine Pond

TOWN OF SANTA CLARA

- Bad News Pond (1,000 feet northwest of Polliwog Pond)
- Black Pond (between Square Pond and Whey Pond)
- Duck or Echo Pond
- Duell Pond (0.25 mile south of Little Green Pond)
- East Copperas Pond
- Federation Pond (0.25 mile southeast of East Pine Pond)

- Frog Pond (650 feet north of Polliwog Pond)
- Little Black Pond (between Black and Square ponds)
- Green Pond (north of Follensby Clear Pond)
- Horseshoe Pond
- Little Polliwog Pond
- Polliwog Pond
- Rat Pond
- Sunday Pond (southeast of Rat Pond)
- Sunrise Pond (east of Follensby Clear Pond)
- Track Pond (0.75 miles northeast of Floodwood Pond)
- Twelfth Tee or Gordon Pond (400 feet north of Green Pond)
- Whey Pond

TOWN OF WAVERLY

- Balsam Pond (2 miles west of Duck Pond)
- Little Clear Pond
- Long Pond and unnamed pond connected to Long Pond

FULTON COUNTY

TOWN OF BLEECKER

- Holmes Lake
- County Line Lake
- Little Homes Lake
- Duck Lake
- Mud Lake

TOWN OF CAROGA

- Broomstick Lake
- Fish Hatchery Pond
- Indian Lake
- Otter Lake
- Prairie Lake
- Stewart Lake

TOWN OF STRATFORD

- Conglin Lakes
- Fourth Lake
- Goose Egg Lake
- House Pond
- Knapps Long Lake
- Long Pond
- Third Lake

HAMILTON COUNTY

- Blue Ridge Wilderness
- Buell Brook Primitive Area
- Essex Chain Lakes Primitive Area
- Five Ponds Wilderness
- High Peaks Wilderness (except Raquette River)
- Hudson Gorge Wilderness Area (except Hudson River)
- Little Moose Wilderness
- Pigeon Lake Wilderness
- Pine Lake Primitive Area
- Round Lake Wilderness Area
- Siamese Ponds Wilderness
- Silver Lake Wilderness (except Sacandaga River)
- Little Moose Wilderness
- West Canada Lakes Wilderness
- West Canada Mountain Primitive Area
- William C. Whitney Wilderness

Region 5 Special Regulations

HAMILTON COUNTY

TOWN OF ARIETTA

- Christian Lake
- G Lake
- Iron Lake
- Jockeybush Lake
- Lower Sargent Pond
- Middle Sargent Pond
- Morley Lake
- Redlouse Lake

TOWN OF HOPE

- Bennett Lake
- Middle Lake
- Murphy Lake

TOWN OF INDIAN LAKE

- Barker Pond
- Bullhead Pond
- Little Grassy Pond
- Lower Helms Pond
- Middle Helms Pond
- OK Slip Pond
- Pine Pond (*west of Blue Mt. Lake*)
- Tirrell Pond
- Unknown Pond
- Unnamed pond (*0.75 miles east of Barker Pond*)
- Upper Helms Pond

TOWN OF INLET

- Bug Lake
- Eagles Nest Lake
- Unnamed pond (*a.k.a.: High Rock Pond*) (*1 mile east of Eighth Lake*)
- Icehouse Pond
- Lost Ponds (3)
- Mitchell Ponds (2)
- Trout Pond
- Unnamed Pond (*Broken Thwart*)

TOWN OF LAKE PLEASANT

- Panther Pond

TOWN OF LONG LAKE

- Bog Pond
- High Pond
- Loon Pond
- Mays Pond
- Mosquito Pond
- Owls Head Pond
- Raquette Lake Reservoir
- Sagamore Lake

TOWN OF MOREHOUSE

- Black Creek Lake
- Bochen Lake
- DeBraine Lake
- Feullard Lake
- Indian Lake
- Long Lake
- Trout Lake
- Squaw Lake
- Unnamed Pond (*0.25 miles southwest of Squaw Lake*)
- West Creek Lake

WARREN COUNTY

- Pharaoh Lake Wilderness
- Siamese Ponds Wilderness

TOWN OF BOLTON

- Brown Pond

TOWN OF CHESTER

- Clear Pond
- Palmer Pond

TOWN OF HAGUE

- Buttermilk Pond
- Jabe Pond
- Little Jabe Pond
- Racket Ponds
- Spectacle Ponds (2)

TOWN OF HORICON

- Duck Pond
- Long Pond
- Round Pond

TOWN OF JOHNSBURG

- Crane Mountain Pond
- Eagle Pond
- Kibby Pond
- Thirteenth Lake
- Unnamed Pond (*2 miles east of Kibby Pond*)

TOWN OF STONY CREEK

- New Lake
- Wilcox Lake

TOWN OF THURMAN

- Little Joe Pond
- Lixard Pond
- Shiras Pond
- Unnamed Pond (*1 mile northwest of Lixard Pond*)

TOWN OF WARRENSBURG

- Gay Pond
- Viele Pond

WASHINGTON COUNTY

TOWN OF DRESDEN

- Black Mountain Ponds (2)
- Bumps Pond
- Fishbrook Pond
- Greenland Pond
- Lapland Pond

TOWN OF FORT ANN

- Inman Pond

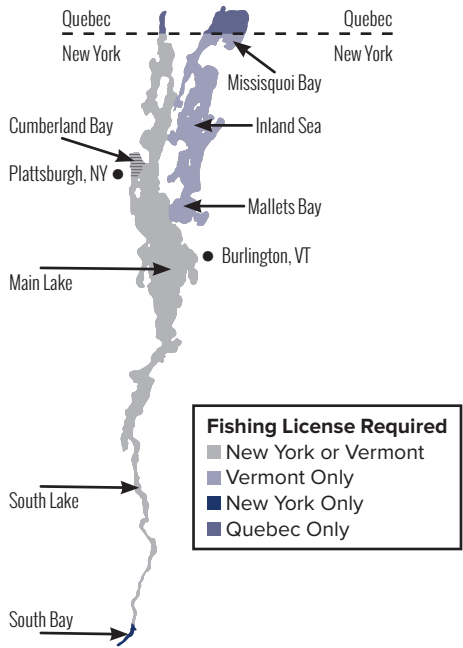
TOWN OF WHITEHALL

- Clear Pond
- Sawmill Pond
- Spruce Pond

ATTENTION LAKE CHAMPLAIN ANGLERS

Lake Champlain Reciprocal Agreement:

Anglers with either a New York or Vermont fishing license may fish in the “Main Lake” and “South Lake” portions of Lake Champlain between New York and Vermont. South Bay in New York, and the Inland Sea, Mallett’s Bay, and Missisquoi Bay (including the area between North and South Hero Island commonly referred to as “The Gut”) in Vermont are not included in the agreement. Anglers fishing on these waters must have a fishing license from the state in which the waterway is located. Shore fishing along the lake portions noted above is permitted as part of the agreement. Rivers that flow into Lake Champlain are not included in the reciprocal agreement.



LAKE CHAMPLAIN AND TRIBUTARIES TO THE FIRST IMPASSIBLE BARRIER (NEW YORK/VERMONT BORDER WATER)

Species	Open Season	Minimum Length	Daily Limit
Trout	All year	12"	3
Lake Trout	All year	15"	3
Landlocked Salmon	All year	15"	2
Black Bass	Second Saturday in June through November 30	12"	5
	December 1 through the Friday preceding the second Saturday in June	Catch and release only; artificial lures only	
Walleye	First Saturday in May through March 15	18"	3
Muskellunge	Last Saturday in May through November 30th	40"	1
Northern Pike	All year	20"	5
Crappie	All year	8"	25
Pickeral	All year	Any size	10

(continued on next page)

Lake Champlain Regulations

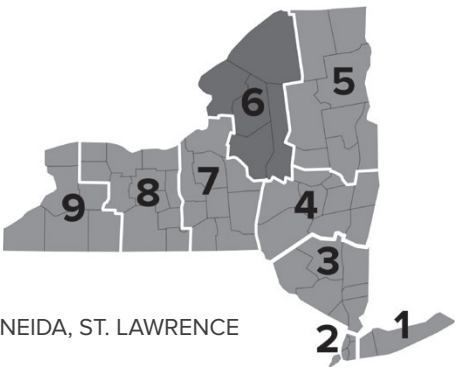
LAKE CHAMPLAIN AND TRIBUTARIES TO THE FIRST IMPASSIBLE BARRIER (NEW YORK/VERMONT BORDER WATER)			
Species	Open Season	Minimum Length	Daily Limit
Yellow perch	All year	Any size	Any number
Sunfish	All year	Any size	Any number
Sauger	May not be taken or possessed at any time.		
Additional Special Regulations			
<ul style="list-style-type: none">• No more than 2 lines per person. Each fishing line may have no more than 2 baited hooks or 2 artificial lures, with or without added natural bait.• No more than 15 ice-fishing lines may be used for ice fishing from Nov 15–April 30.• Ice fishing permitted			
Additional Lake Champlain Tributary Regulations			
Tributary Section	Regulation		
Ausable River <i>from the marked boundary 800 feet west of the 1st State Route 9 bridge upstream from Lake Champlain upstream to Rainbow Falls</i>	Fishing from boats prohibited.		
Ausable River <i>from D&H Railroad bridge upstream to Rainbow Falls</i>	<p>From June 15–Dec 31</p> <ul style="list-style-type: none">• Maximum hook gap 1/2 inch.• Fishing prohibited from 1/2 hour after sunset to 1/2 hour before sunrise.• Fishing permitted with unweighted artificial flies or unweighted natural baits only (see definitions).• No supplemental weight, such as metal leaders, sinkers, split shot, twist-ons, or swivels may be attached to line, leader, or hook.		
Ausable Boat Basin <i>at the mouth of Ausable Chasm between posted boundaries</i>	Fishing prohibited at all times as posted onsite		
Boquet River <i>from mouth upstream to Wadhams Falls</i>	<p>From June 15–Dec 31</p> <ul style="list-style-type: none">• Maximum hook gap 1/2 inch.• Fishing prohibited from 1/2 hour after sunset to 1/2 hour before sunrise.• Fishing permitted with unweighted artificial flies or unweighted natural baits only (see definitions).• No supplemental weight, such as metal leaders, sinkers, split shot, twist-ons, or swivels, may be attached to line, leader, or hook.		

LAKE CHAMPLAIN AND TRIBUTARIES TO THE FIRST IMPASSIBLE BARRIER (NEW YORK/VERMONT BORDER WATER)

Boquet River <i>from the Route 22 bridge in Willsboro, downstream approximately 1,500 feet to the marked boundary at the base of the cascades</i>	Fishing prohibited
Chazy River <i>from Rte. 9B at Coopersville upstream to Perrys Mills Dam</i>	Fishing prohibited from Mar 16–Apr 30
Mill Brook <i>(in Port Henry) from mouth to falls west of Route 22</i>	Fishing prohibited from Oct 1–Dec 31
North Branch Boquet River and tributaries from mouth to first upstream barrier	<p>From June 15–Sept 30</p> <ul style="list-style-type: none"> • Maximum hook gap 1/2 inch. • Fishing prohibited from 1/2 hour after sunset to 1/2 hour before sunrise. • Fishing permitted with unweighted artificial flies or unweighted natural baits only (see definitions). • No supplemental weight, such as metal leaders, sinkers, split shot, twist-ons, or swivels, may be attached to line, leader, or hook. <p>From Oct 1–Dec 31</p> <ul style="list-style-type: none"> • Fishing Prohibited
Saranac River from Catherine Street bridge upstream to Imperial Mill Dam	<p>At all times</p> <ul style="list-style-type: none"> • Fishing from boats prohibited <p>From June 15–Dec 31</p> <ul style="list-style-type: none"> • Maximum hook gap 1/2 inch. • Fishing prohibited from 1/2 hour after sunset to 1/2 hour before sunrise. • Fishing permitted with unweighted artificial flies or unweighted natural baits only (see definitions). • No supplemental weight, such as metal leaders, sinkers, split shot, twist-ons, or swivels may be attached to line, leader, or hook.

Region 6 Special Regulations

Jana Lantry, Regional Fisheries Manager
Dulles State Office Bldg.
317 Washington Street
Watertown, NY 13601-3787
(315) 785-2263
fwfish6@dec.ny.gov



COUNTIES: HERKIMER, JEFFERSON, LEWIS, ONEIDA, ST. LAWRENCE

Water	Regulation
Waterbodies found in a different section of the guide	
Inland Trout Streams	See Inland Trout Stream Regulations (Page 47)
Lake Ontario and tributaries upstream to the 1st impassible barrier to fish	See Great Lakes & Tributaries Regulations. (Page 60)
St. Lawrence River and tributaries upstream to the 1st impassible barrier to fish	See Great Lakes & Tributaries Regulations. (Page 60)
Region-wide Regulations	
All lakes and ponds, except as listed below or baitfish prohibited lakes and ponds listed on page 39	Brook Trout, April 1-Oct 15, Daily Limit-5 with no more than 2 longer than 12"
All baitfish prohibited lakes and ponds listed on page 39 except as listed below	Brook Trout, April 1-Oct 15, Minimum Length-none, Daily Limit-5
Herkimer County	
All waters inhabited by trout, except as permitted below	Ice fishing prohibited
Beardsley Lake	Ice fishing permitted
Beaver Lake	Ice fishing permitted • Brook Trout, April 1 through October 15, Minimum Length-none, Daily Limit-5
Evergreen Lake	Trout, April 1–Oct 15, Minimum Length-none, Daily Limit-3, Artificial lures only
First Lake of Fulton Chain	Ice fishing permitted • Lake Trout, All year, Minimum Length-21", Daily Limit-3
Fourth Lake of Fulton Chain	Ice fishing permitted • Lake Trout, All year, Minimum Length-21", Daily Limit-3 • Black Bass, June 15 through November 30, Minimum Length-12", Daily Limit-5 • Black Bass, December 1 through June 14, Catch and Release only, Artificial lures only • Brook Trout, All year, Minimum Length-9", Daily Limit-5

Region 6 Special Regulations

Water	Regulation
Hidden Lake	Trout, April 1–Oct 15, Minimum Length-None, Daily Limit-3, Artificial lures only
Hinckley Reservoir	Ice fishing permitted
Horn Lake	Trout, April 1 through October 15, Minimum Length-None, Daily Limit-3, Artificial lures only
Kyser Lake	Ice fishing permitted
Limekiln Lake	Ice fishing permitted • Brook Trout, All year, Minimum Length-None, Daily Limit-5
Moshier Reservoir	Ice fishing permitted • Brook Trout, April 1 through October 15, Minimum Length-none, Daily Limit-5
North Lake	Ice fishing permitted
Old Forge Pond	Ice fishing permitted • Lake Trout, All year, Minimum Length-21", Daily Limit-3
Peaked Mountain Lake	Trout, April 1–Oct 15, Minimum Length-None, Daily Limit-3, Artificial lures only
Prospect Reservoir	Ice fishing permitted
Second Lake of Fulton Chain	Ice fishing permitted • Lake Trout, All year, Minimum Length-21", Daily Limit-3
Stillwater Reservoir	Ice fishing permitted • Brook Trout, All year, Minimum Length-12", Daily Limit-3
Third Lake of Fulton Chain	Ice fishing permitted • Lake Trout, All year, Minimum Length-21", Daily Limit-3
Woodhull Lake	Lake Trout, April 1 through October 15, Minimum Length-18", Daily Limit-3
Jefferson County	
All Waters, except Sandy Pond	Yellow Perch, All year, Minimum Length-None, Daily Limit-Any number
All Waters, including those covered by Great Lakes regulations, except as listed below	Ice fishing permitted • Black Bass, June 15 through November 30, Minimum Length-12", Daily Limit-5 • Fishing for black bass (including catch & release) is prohibited outside of the open season.
Black River from upstream tip of lowermost island upstream to Mill Street in Watertown	See Great Lakes Regulations (Page 60)
Butterfield Lake	Walleye, May 1 through March 15, Minimum Length-18", Daily Limit-3
Clear Lake	Walleye, May 1 through March 15, Minimum Length-18", Daily Limit-3
Grass Lake	Walleye, May 1 through March 15, Minimum Length-18", Daily Limit-3

Region 6 Special Regulations

Water	Regulation
Hyde Lake	Walleye, May 1 through March 15, Minimum Length-18", Daily Limit-3
Lake-Of-The-Woods	Lake Trout, All year, Minimum Length-21", Daily Limit-3
Millsite Lake	Lake Trout, April 1 through October 15, Minimum Length-21", Daily Limit-3
Perch Lake	Fishing allowed as permitted by Wildlife Management Area signage
Red Lake	Sunfish, All year, Minimum Length-8", Daily Limit-15
Sandy Pond	Yellow Perch, All year, Minimum Length-none, Daily Limit-50 • Lake Ontario seasons and limits apply to other species (Page 63)
Sixberry Lake	Lake Trout, All year, Minimum Length-21", Daily Limit-3
Sixtown Pond	Walleye, May 1 through March 15, Minimum Length-18", Daily Limit-3 • Sunfish, All year, Minimum Length-8", Daily Limit-15
Lewis County	
All waters inhabited by trout, except as permitted below	Ice fishing prohibited
Beaver Lake	Ice fishing permitted • Brook Trout, April 1 through October 15, Minimum Length-none, Daily Limit-5
Crystal Pond	Trout, April 1 through October 15, Daily Limit-3 with no more than 1 longer than 12" • Trout, October 16 through March 31, Catch and Release only, Artificial lures only
Francis Lake	Ice fishing permitted
Lake Bonaparte	Ice fishing permitted • Lake Trout, All year, Minimum Length-18", Daily Limit-3
Soft Maple Reservoir	Ice fishing permitted
Whetstone Marsh Pond	Ice fishing permitted
Oneida County	
All waters, except as prohibited below	Ice fishing permitted
Brandy Lake (Town of Forestport)	Ice fishing prohibited
East Branch Fish Creek from mouth upstream to the Rte. 69 bridge in Taberg	Fishing is prohibited from March 16 through April 30
Fish Creek from Barge Canal upstream to the junction of East and West Branches of Fish Creek	Fishing is prohibited from March 16 through April 30

Region 6 Special Regulations

Water	Regulation
Mohawk River <i>from Delta Lake upstream to the bridge in Westernville</i>	Fishing is prohibited from March 16 through April 30
Round Pond <i>(Town of Forestport)</i>	Ice fishing prohibited
West Branch of Fish Creek <i>from mouth upstream to the dam in McConnellsville</i>	Fishing is prohibited from March 16 through April 30
St Lawrence County	
All waters inhabited by trout , <i>except as permitted below</i>	Ice fishing prohibited
All Waters , <i>including those covered by Great Lakes regulations, except as listed below</i>	Black Bass, June 15 through November 30, Minimum Length-12", Daily Limit-5 • Fishing for black bass (including catch & release) is prohibited outside of the open season.
Allen Pond	Trout, April 1–Oct 15, Minimum Length-12", Daily Limit-3
Black Lake	Ice fishing permitted • Black Bass, June 15 through November 30, Minimum Length-15", Daily Limit-5 • Fishing for black bass (including catch & release) is prohibited outside of the open season • Walleye, May 1 through March 15, Minimum Length-18", Daily Limit-3
Cranberry Lake	Ice fishing permitted • Northern Pike, May 1 through March 15, Minimum Length-None, Daily Limit-5
Fish Creek <i>from the west side (downstream) of the State Rte. 58 bridge upstream to the highest point of Fish Creek Falls in Pope Mills</i>	Fishing is prohibited from March 16 through April 30
Grasse River <i>from the downstream side of the ALCOA Road bridge upstream to the upstream side of the Main Street bridge in the Village of Massena</i>	Fishing prohibited from March 16 through April 30
Horseshoe Lake	Ice fishing permitted • Walleye, May 1 through March 15, Minimum Length-18", Daily Limit-3
Indian River <i>from Black Lake upstream to the falls in Rossie</i>	Black Bass, June 15 through November 30, Minimum Length-15", Daily Limit-5 • Fishing for black bass (including catch & release) is prohibited outside of the open season. • Walleye, May 1 through March 15, Minimum Length-18", Daily Limit-3
Indian River <i>from the confluence with the Oswegatchie River upstream to Black Lake</i>	Black Bass, June 15 through November 30, Minimum Length-15", Daily Limit-5 • Fishing for black bass (including catch & release) is prohibited outside of the open season. • Walleye, May 1 through March 15, Minimum Length-18", Daily Limit-3

Region 6 Special Regulations

Water	Regulation
Indian River <i>from the west side (downstream) of County Rte. 8 bridge at Rossie upstream to the highest point of Rossie Falls</i>	Fishing is prohibited from March 16 through April 30
Lake Ozonia	Ice fishing permitted
Massawepie Conservation Easement Area , <i>lakes and ponds</i>	Trout, April 1 through October 15, Minimum Length-12", Daily Limit-3
Oswegatchie River <i>from north side of the lower most bridge, St. Rte. 68, upstream to the dam in Ogdensburg</i>	Fishing prohibited from March 16 through April 30
Pleasant Lake <i>(Town of Macomb)</i>	Ice fishing permitted • Walleye, May 1 through March 15, Minimum Length-18", Daily Limit-3
Star Lake	Ice fishing permitted • Lake Trout, All year, Minimum Length-21", Daily Limit-3
Sterling Pond	Ice fishing permitted
Sylvia Lake	Ice fishing permitted • Lake Trout, All year, Minimum Length-21", Daily Limit-3
Tamarack Pond	Trout, April 1–Oct 15, Minimum Length-12", Daily Limit-3
Tooley Pond	Black Bass, June 15 through November 30, Catch and Release only, Artificial lures only • Fishing for black bass (including catch & release) is prohibited outside of the open season.
Trout Lake	Ice fishing permitted • Lake Trout, All year, Minimum Length-21", Daily Limit-3
Tupper Lake	Ice fishing permitted • Lake Trout, All year, Minimum Length-21", Daily Limit-3

BAITFISH PROHIBITED WATERS

Use of baitfish is prohibited in the following waters:

Note: See page 34 for Brook Trout regulations.

HERKIMER COUNTY

- Five Ponds Wilderness
- Ha-De-Ron-Dah Wilderness
- Pepperbox Wilderness
- Pigeon Lake Wilderness
- West Canada Lake Wilderness

TOWN OF WEBB

- Bear Lake
- Bubb Lake
- Brewer Lake
- Buck Lake (*0.5 mile north of Hog Pond*)
- Buck Pond (*1 mile west of Thirsty Pond*)
- Clear Pond
- Moss Lake
- Nicks Lake
- Big Otter Lake
- Quiver Pond
- Razorback Pond
- Sis Lake
- Tied Lake
- Twitchell Lake
- West Pond (*0.6 mile southwest of Big Moose Lake*)
- Wheeler Pond

- Woods Lake

LEWIS COUNTY

- Ha-De-Ron-Dah Wilderness

TOWN OF CROGHAN

- Clear Pond
- Rock Pond
- Seepage Pond
- Trout Pond

TOWN OF DIANA

- Green Pond
- Sealy Pond
- Silver Dawn Lake
- Little Silver Dawn Lake

TOWN OF GREIG

- Pitcher Pond

TOWN OF WATSON

- Cleveland Lake
- Evies Pond
- Long Lake
- Payne Lake

ONEIDA COUNTY

TOWN OF FORESTPORT

- Brandy Lake
- Round Pond

ST. LAWRENCE COUNTY

- Five Ponds Wilderness
- Raquette-Jordan Boreal Primitive Area
- Round Lake Wilderness

TOWN OF CLARE

- Allen Pond

TOWN OF COLTON

- Burntbridge Pond
- Church Pond
- Clear or Hedgehog Pond
- Curtis Pond
- Dog Pond

- Townline Pond

TOWN OF FINE

- Long Lake
- Nicks Pond
- Round Lake
- Streeter Lake

TOWN OF PARISHVILLE

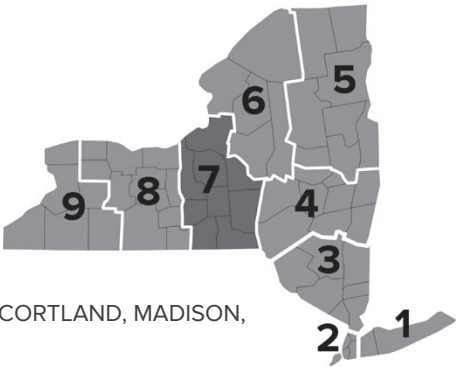
- Clear Pond
- Long Pond
- Lilypad Pond

TOWN OF PIERCEFIELD

- Black Pond
- Bottree Pond
- Bridgebrook Pond
- Deer Pond
- Horseshoe Pond
- Long Pond
- Lows Lake (*Bog River upstream of the dam above Hitchens Pond*)
- Massawepie Lake
- Pine Pond
- Round Pond
- Townline Pond

Region 7 Special Regulations

Scott Prindle, Regional Fisheries Manager
1285 Fisher Ave.
Cortland, NY 13045-1090
(607) 753-3095
fwfish7@dec.ny.gov



COUNTIES: BROOME, CAYUGA, CHENANGO, CORTLAND, MADISON, ONONDAGA, OSWEGO, TIOGA, TOMPKINS

Water	Regulation
Waterbodies found in a different section of the guide	
Cayuga Lake	See Finger Lakes & Tributary Regulations (Page 57)
Inland Trout Streams	See Inland Trout Stream Regulations (Page 47)
Lake Ontario	See Great Lakes & Tributaries Regulations (Page 60)
Otisco Lake	See Finger Lakes & Tributary Regulations (Page 57)
Owasco Lake	See Finger Lakes & Tributary Regulations (Page 57)
Skaneateles Lake	See Finger Lakes & Tributary Regulations (Page 57)
Region-wide Regulations	
All lakes and ponds, except as listed below	Brook Trout, April 1-October 15, Daily Limit-5 with no more than 2 longer than 12"
Broome County	
Otselic River from Whitney Point Reservoir upstream to the Cortland County Rte. 169 bridge at Landers Corners	Walleye, May 1 through March 15, Minimum Length-18", Daily Limit-3
Susquehanna River between Rock Bottom Dam and the Exchange St. Bridge in Binghamton	Fishing is prohibited from March 16 through April 30
Susquehanna River from the railroad bridge 0.65 miles downstream of the Rte. 201 bridge in Johnson City to Murphy's Island (0.5 miles upstream of Harold Moore Park)	Fishing is prohibited from March 16 through April 30
Tioughnioga River from the New York Rte. 26 bridge to the U.S. Rte. 11 bridge	Fishing is prohibited from March 16 through April 30
Whitney Point Reservoir	Walleye, May 1 through March 15, Minimum Length-18", Daily Limit-3

Region 7 Special Regulations

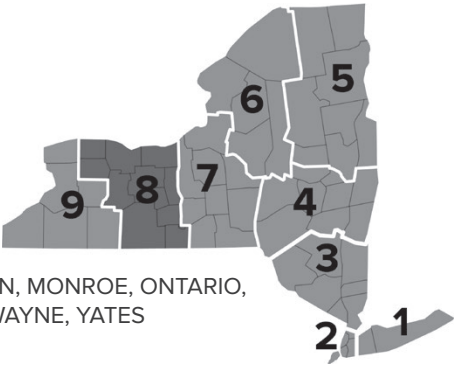
Water	Regulation
Cayuga County	
Cross Lake	Northern Pike, May 1 through March 15, Minimum Length-22", Daily Limit-5 • Walleye, May 1 through March 15, Minimum Length-18", Daily Limit-3
Seneca River from Plainville Road (Hamlet of Jacks Reef) upstream to Seneca Lake	Walleye, May 1 through March 15, Minimum Length-18", Daily Limit-3 • Northern Pike, May 1 through March 15, Minimum Length-22", Daily Limit-5
Cortland County	
Otselic River from Whitney Point Reservoir upstream to the Cortland County Rte. 169 bridge at Landers Corners	Walleye, May 1 through March 15, Minimum Length-18", Daily Limit-3
Madison County	
Canaseraga Creek from the Rte. 31 bridge upstream to the Thruway	Fishing is prohibited from March 16 through April 30
Cazenovia Lake	Walleye, May 1 through March 15, Minimum Length-18", Daily Limit-3 • Sunfish, All year, Minimum Length-8", Daily Limit-15
Chittenango Creek from the mouth upstream to Conrail railroad line	Fishing is prohibited from March 16 through April 30
Cowaselon Creek from mouth upstream to Rte. 13	Fishing is prohibited from March 16 through April 30
Eaton Brook Reservoir	Walleye, May 1 through March 15, Minimum Length-18", Daily Limit-3
Onondaga County	
Chittenango Creek from the mouth upstream to the Conrail railroad line	Fishing is prohibited from March 16 through April 30
Cross Lake	Northern Pike, May 1 through March 15, Minimum Length-22", Daily Limit-5 • Walleye, May 1 through March 15, Minimum Length-18", Daily Limit-3
Jamesville Reservoir	Walleye, May 1 through March 15, Minimum Length-18", Daily Limit-3
Seneca River from Plainville Road (Hamlet of Jacks Reef) upstream to Seneca Lake	Walleye, May 1 through March 15, Minimum Length-18", Daily Limit-3 • Northern Pike, May 1 through March 15, Minimum Length-22", Daily Limit-5
Seneca River from the confluence with Oneida River upstream to Plainville Road (Hamlet of Jacks Reef)	Northern Pike, May 1 through March 15, Minimum Length-22", Daily Limit-5

Region 7 Special Regulations

Water	Regulation
Oswego County	
Redfield Reservoir	Walleye, May 1 through March 15, Minimum Length-18", Daily Limit-3
Scriba Creek <i>from its mouth upstream to Fish Hatchery Dam</i>	Fishing is prohibited from March 16 through April 30

Region 8 Special Regulations

Webster Pearsall, Regional Fisheries Manager
6274 East Avon-Lima Rd.
Avon, NY 14414-9519
(585) 226-2466
fwfish8@dec.ny.gov



COUNTIES: CHEMUNG, GENESEE, LIVINGSTON, MONROE, ONTARIO, ORLEANS, SCHUYLER, SENECA, STEUBEN, WAYNE, YATES

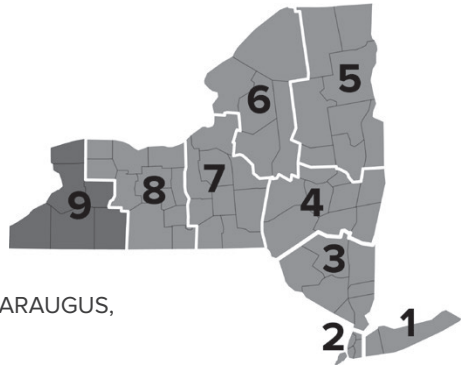
Water	Regulation
Waterbodies found in a different section of the guide	
Canandaigua Lake	See Finger Lakes & Tributary Regulations (Page 57)
Canadice Lake	See Finger Lakes & Tributary Regulations (Page 57)
Cayuga Lake	See Finger Lakes & Tributary Regulations (Page 57)
Conesus Lake	See Finger Lakes & Tributary Regulations (Page 57)
Hemlock Lake	See Finger Lakes & Tributary Regulations (Page 57)
Honeoye Lake	See Finger Lakes & Tributary Regulations (Page 57)
Inland Trout Streams	See Inland Trout Stream Regulations (Page 47)
Keuka Lake	See Finger Lakes & Tributary Regulations (Page 57)
Lake Ontario	See Great Lakes & Tributaries Regulations (Page 60)
Seneca Lake	See Finger Lakes & Tributary Regulations (Page 57)
Region-wide Regulations	
All lakes and ponds, except as listed below	Brook Trout, April 1-October 15, Daily Limit-5 with no more than 2 longer than 12"
Chemung County	
Park Station Pond	Trout, All year, Minimum Length-none, Daily Limit-5 with no more than 2 longer than 12"
Livingston County	
Conesus Inlet Fish and Wildlife Management Area from Conesus Lake south to and including the dam on Conesus Inlet, except the canal west of Conesus Inlet and that portion of the Inlet north of the canal	Fishing is prohibited March 1 through April 30

Region 8 Special Regulations

Water	Regulation
Genesee River <i>from the downstream side of Mount Morris Dam downstream to the first railroad bridge downstream of State Route 36</i>	Fishing is prohibited from March 16 through April 30
North McMillan Creek <i>from Conesus Lake upstream to its source</i>	Fishing is prohibited March 1 through April 30
Orleans County	
Waterport Reservoir	Walleye, May 1 through March 15, Minimum Length-18", Daily Limit-3
Schuyler County	
Cayuta Lake	Walleye, May 1 through March 15, Minimum Length-18", Daily Limit-3
Seneca County	
Clyde River <i>from the confluence with Seneca River upstream to Lock 26 on the Erie Canal</i>	Walleye, May 1 through March 15, Minimum Length-18", Daily Limit-3
Erie Canal <i>from the confluence with Seneca River upstream to Lock 26 on the Erie Canal</i>	Walleye, May 1 through March 15, Minimum Length-18", Daily Limit-3
Seneca River <i>from Plainville Road (Hamlet of Jacks Reef – Onondaga County) upstream to Seneca Lake</i>	Walleye, May 1 through March 15, Minimum Length-18", Daily Limit-3 • Northern Pike, May 1 through March 15, Minimum Length-22", Daily Limit-5
Wayne County	
Clyde River <i>from the confluence with Seneca River upstream to Lock 26 on the Erie Canal</i>	Walleye, May 1 through March 15, Minimum Length-18", Daily Limit-3
Erie Canal <i>from the confluence with Seneca River upstream to Lock 26 on the Erie Canal</i>	Walleye, May 1 through March 15, Minimum Length-18", Daily Limit-3
Seneca River <i>from Plainville Road (Hamlet of Jacks Reef – Onondaga County) upstream to Seneca Lake</i>	Walleye, May 1 through March 15, Minimum Length-18", Daily Limit-3 • Northern Pike, May 1 through March 15, Minimum Length-22", Daily Limit-5

Region 9 Special Regulations

Michael Clancy, Regional Fisheries Manager
 182 East Union St., Suite 3
 Allegany, NY 14706
 (716) 372-0645
fwfish9@dec.ny.gov



COUNTIES: ALLEGANY, CHAUTAUQUA, CATTARAUGUS,
 ERIE, NIAGARA, WYOMING

Water	Regulation
Waterbodies found in a different section of the guide	
Inland Trout Streams	See Inland Trout Stream Regulations (Page 47)
Lake Erie	See Great Lakes & Tributaries Regulations (Page 60)
Lake Ontario	See Great Lakes & Tributaries Regulations (Page 60)
Niagara River (<i>Upper and Lower</i>)	See Great Lakes & Tributaries Regulations (Page 60)
Region-wide Regulations	
All lakes and ponds, except as listed below	Brook Trout, April 1-October 15, Daily Limit-5 with no more than 2 longer than 12"
Allegany County	
Allen Lake	Brook Trout, All year, Minimum Length-none, Daily Limit-5 with no more than 2 longer than 12"
Cattaraugus County	
Allegany State Park	State Park regulations may apply. Check at Park Administration building.
Case Lake	Brook Trout, All year, Minimum Length-none, Daily Limit-5 with no more than 2 longer than 12"
Harwood Lake	Brook Trout, All year, Minimum Length-none, Daily Limit-5 with no more than 2 longer than 12"
New Albion Lake	Brook Trout, All year, Minimum Length-none, Daily Limit-5 with no more than 2 longer than 12"
Buttermilk Creek <i>from the mouth to Fox Valley Road</i>	Fishing prohibited all year

Region 9 Special Regulations

Water	Regulation
Chautauqua County	
Chadakoin River <i>from Chautauqua Lake downstream to Warner Dam</i>	Muskellunge and Tiger Muskellunge, June 1 through November 30, Minimum Length-40", Daily Limit-1
Chautauqua Lake <i>and its tributaries upstream to the first road bridge</i>	Muskellunge and Tiger Muskellunge, June 1 through November 30, Minimum Length-40", Daily Limit-1
Wyoming County	
Silver Lake	Sunfish, All year, Minimum Length-8", Daily Limit-15

Inland Trout Stream Special Regulations

Trout stream reaches categorized as Wild or Stocked are managed using statewide inland trout stream regulations (page 4). Regulations for other categorized stream reaches are listed below.

Stocked-Extended (SE) and Wild Quality (WQ Categories)

Regulations: April 1–Oct 15, Daily Limit-3 with no more than 1 longer than 12”
Oct 16–Mar 31, Catch and Release only, Artificial lures only

Wild-Premier (WP Categories)

Regulations: April 1–Oct 15, Daily Limit-1, Any size
Oct 16–Mar 31, Catch and Release only, Artificial lures only

Catch and Release (CR Category)

Regulations: All year, Catch and Release only, Artificial lures only

REGION	STREAM	REACH	CATEGORY
3	Amawalk Outlet (Muscoot River)	From Muscoot Reservoir upstream to Amawalk Reservoir	WQ
3	Beaver Kill	From the Delaware/Sullivan County line downstream of Roscoe upstream to the Route 206 Bridge	SE
3	Beaver Kill	From the downstream end of the Beaver Kill Campground upstream to 0.5 miles upstream of the Beaver Kill covered bridge at the Beaver Kill Campground	SE
3	Cedar Pond Brook	From the Pyngyp Road/Route 210 intersection upstream to the Cedar Flats Road/Route 210 intersection	WQ
3	East Branch Croton River	From confluence with West Branch Croton River upstream to Diverting Reservoir Dam	SE
3	East Branch Croton River	From Diverting Reservoir upstream to East Branch Reservoir Dam	SE
3	Esopus Creek	From Ashokan Reservoir upstream to confluence with Lost Clove Creek	WQ
3	Mongaup Creek	From confluence with Willowemoc Creek upstream to confluence with the tributary immediately south of the Catskill Fish Hatchery.	WQ

Restrictions: Baitfish prohibited

Inland Trout Stream Special Regulations

REGION	STREAM	REACH	CATEGORY
3	Neversink River	From the Guymard Tpke crossing upstream to the Sullivan/Orange County Line (SE)	SE
3	Neversink River	Neversink River and tributaries within the Neversink River Unique Area and owned by the people of the State of New York situated in the Towns of Thompson and Forestburgh and abutting that reach of the Neversink River from the Sullivan/Orange County line upstream to its confluence with Mercer Brook, except any portion thereof where the right to fish is privately owned	CR
3	Neversink River	From 1.0 miles downstream of Bridgeville Road upstream to Wynkoop Brook	SE
3	North Br Callicoon Creek	From the confluence with Callicoon Creek upstream to Gossweyler Pond	SE
3	North Br Callicoon Creek	From Gossweyler Pond upstream to the first Lower Weissman Road bridge crossing	WQ
3	Ramapo River	From the downstream end of H. Pierson Mapes Flat Rock County Park upstream to Arden Valley Road	SE
3	Rochester Creek	From the confluence with Rondout Creek upstream to confluence with Mettakahonts Creek	WQ
3	Rondout Creek	From confluence with Sundown Creek upstream to upstream most crossing of County Route 42	WQ
3	Wappinger Creek	From New Hackensack Road Bridge in Red Oaks Mill upstream to East Branch Wappinger Creek in Hibernia	SE
3	Wappinger Creek	From 3/4 miles downstream of Jameson Hill Rd. Bridge in Clinton Corners upstream to Hunns Lake Creek in Stanfordville	WQ
3	West Branch Beer Kill	From the confluence with Beer Kill upstream to Windsor Lake	WQ

Inland Trout Stream Special Regulations

REGION	STREAM	REACH	CATEGORY
3	West Branch Croton River	From confluence with East Branch Croton River upstream to Croton Falls Reservoir Dam	CR
3	West Branch Croton River	From Croton Falls Reservoir upstream to West Branch Reservoir Dam	WQ
3	Willowemoc Creek	From the confluence with the Beaver Kill upstream to the second Route 17 Quickway Bridge east of Roscoe	SE
3	Willowemoc Creek	From the second Route 17 Quickway Bridge east of Roscoe upstream 3.5 miles to 1,200 feet upstream of the confluence with Elm Hollow Brook	CR
3	Willowemoc Creek	From 1,200 feet upstream of the confluence with Elm Hollow Brook upstream to Parkston Road Bridge	SE
3	Willowemoc Creek	From the downstream end of the Willowemoc Wild Forest upstream to the confluence with Fir Brook	SE
4	Batavia Kill	From confluence with East Branch Delaware River upstream to source	WQ
4	Beaver Kill	From 1.6 miles downstream of Iron Bridge at Horton upstream to 1 mile upstream of Iron Bridge at Horton. Restrictions: Angling prohibited from July 1 through August 31 from Iron Bridge at Horton downstream to first Route 17 overpass.	CR
4	Beaver Kill	From 1 mile upstream of Iron Bridge at Horton upstream to the old railroad trestle 2.5 miles downstream of the Sullivan County Line	SE
4	Beaver Kill	From the Sullivan County Line downstream of Roscoe downstream 2.5 miles to the old railroad trestle	CR
4	Beaver Kill	From the Delaware/Sullivan County line downstream of Roscoe upstream to the Route 206 Bridge	SE
4	Bushkill	From confluence with Dry Brook upstream to confluence with Emory Brook and Vly Creek	WQ

Inland Trout Stream Special Regulations

REGION	STREAM	REACH	CATEGORY
4	Bushnellsville Creek	From Greene/Ulster County Line upstream to source	WQ
4	Catskill Creek	From confluence with Basic Creek in Freehold upstream to the confluence with Fox Creek in Preston Hollow	SE
4	Delaware River	From Bridge in Lordville upstream to confluence with West and East Branches of Delaware River	WP
4	East Br Delaware River	From confluence with West Branch Delaware River upstream to Route 206/30 bridge in Downs ville	WP
4	East Brook	From confluence with West Branch Delaware River upstream to source	WQ
4	East Creek (aka Kinderhook Creek)	From confluence with Kinderhook Creek south of Route 43 in Stephentown upstream to State Line	WQ
4	Emory Brook	From confluence with Bush Kill upstream to source	WQ
4	Kinderhook Creek	From I-90 upstream to confluence with East Creek south of Route 43 in Stephentown	SE
4	Little Hoosic River	From confluence with Hoosic River upstream to source	WQ
4	Panther Creek	From Route 4 in West Fulton upstream to source	WQ
4	Russell Brook	From confluence with Beaver Kill upstream to source	WQ
4	West Br Delaware River	Forming NY/PA border	WP
4	West Br Delaware River	From NY/PA border upstream to 2 miles downstream of the Route 17 bridge at Deposit	WP
4	West Br Delaware River	From Route 17 bridge at Deposit downstream 2 miles	CR
4	West Br Delaware River	From Route 17 bridge at Deposit upstream to Stilesville Weir	WP
4	West Br Delaware River	From East Brook in Walton upstream 35.5 miles to Town Brook in Hobart	SE
5	Batten Kill	From confluence with Whittaker Brook upstream to Rexleigh Bridge	SE

Inland Trout Stream Special Regulations

REGION	STREAM	REACH	CATEGORY
5	Batten Kill	From County Route 61 Bridge in Shushan upstream to County Route 64 Bridge	SE
5	Batten Kill	From County Route 64 Bridge upstream to covered bridge in Eagleville	WQ
5	Batten Kill	From covered bridge at Eagleville upstream to Vermont state line	CR
5	Cayadutta Creek	From footpath bridge off of W. Montgomery Street upstream to County Highway 122	SE
5	Chateaugay River	From end of posted PFR 1 mile from US/Canada border upstream to 1.0 miles upstream of the Marble River confluence	SE
5	Chateaugay River	From the Chasm Dam impoundment upstream to High Falls Dam	SE
5	Hudson River	From the confluence of Raymond Brook upstream to the confluence with Thirteenth Brook	SE
5	Kayaderoseras Creek	From Galway Road upstream to 0.5 miles upstream of crossing at intersection of N. Creek Rd. and Squashville Rd.	SE
5	Mettawee River	From Lower Turnpike Bridge in North Granville upstream to Vermont State Line	SE
5	North Branch Great Chazy River	From confluence with Great Chazy River upstream to confluence with Graves Brook	SE
5	North Branch Great Chazy River	From confluence with Graves Brook upstream to Lake Roxanne Road in Ellenburg Depot	SE
5	Salmon River	From Rte. 37 Bridge in Westville Center upstream to Flatrock Road Bridge	SE
5	Salmon River	From Flatrock Road Bridge upstream to 200 yards downstream of the Cargin Road Bridge	CR
5	Salmon River	From 200 yds. downstream of Cargin Road Bridge upstream to Lamica Lake Dam	SE

Inland Trout Stream Special Regulations

REGION	STREAM	REACH	CATEGORY
5	Saranac River	From the Millstone Monument located at the intersection of Sand Road and NYS Route 22B in Morrisonville upstream to Kent Falls Dam	CR
5	Saranac River	From 1500 ft east of Pup Hill Road bridge crossing upstream to the marked boundary 100 yards upstream of its confluence with the North Branch Saranac River	SE
5	Saranac River	From marked boundary 100 yards upstream of its confluence with the North Branch Saranac River upstream 1.4 miles to Stord Brook	CR
5	Schroon River	From Bolton Landing-Riverbank Road upstream to Starbuckville dam	SE
5	True Brook	From confluence with Saranac River upstream to Smithkill Brook (0.8 mile west of Number 37 Rd)	WQ
5	West Branch Ausable River	From confluence with East Branch Ausable River upstream to the Rt 86 bridge at the Flume	SE
5	West Branch Ausable River	From the Route 86 bridge at The Flume upstream to the Whiteface Ski Center bridge	CR
5	West Branch Ausable River	From the Whiteface Ski Center Bridge upstream to the DEC sign 2.2 miles downstream of Monument Falls	SE
5	West Branch Ausable River	From DEC sign 2.2 miles downstream of Monument Falls upstream to confluence with Holcomb Pond Outlet	CR
6	Crystal Creek	From confluence with the Black River upstream to Crystal Pond Dam	WQ
6	Crystal Creek	From Crystal Pond upstream to Erie Canal Road	WQ
6	Fish Creek	From the confluence with Black River upstream to 1.5 miles upstream of North South Road	WQ
6	Mohawk River	From Delta Dam downstream to first confluence with Barge Canal	SE
6	South Branch Grass River	From 0.5 mile downstream of Route 3 upstream to Grass River Flow	CR

Inland Trout Stream Special Regulations

REGION	STREAM	REACH	CATEGORY
6	West Canada Creek	From Bridge Street in Middleville to the first bridge (Comstock Bridge) downstream of the mouth of Cincinnati Creek	SE
6	West Canada Creek	From the first bridge (Comstock Bridge) downstream of the mouth of Cincinnati Creek upstream to Trenton Falls Dam	CR
7	Butternut Creek	From Kinne Road upstream to Jamesville Reservoir	SE
7	Butternut Creek	From Jamesville Reservoir upstream to Route 80	SE
7	Chittenango Creek	From Russell Street in Chittenango upstream to mile marker 1237 south of the Village of Chittenango Line	SE
7	Chittenango Creek	From the mile marker 1237 south of the Village of Chittenango Line upstream to the Town of Fenner/Town of Sullivan Town line at mile marker 1219	CR
7	Chittenango Creek	From the Town of Fenner/Town of Sullivan Town Line at mile marker 1219 upstream to Route 20 in Cazenovia	SE
7	Genegantslet Creek	From first Route 220 bridge North of Smithville Flats upstream to mouth of Five Streams	CR
7	Limestone Creek	From Erie Canal upstream to Route 80	SE
7	Ninemile Creek	From Onondaga Lake upstream to Amboy Dam	CR
7	Ninemile Creek	From Amboy Dam upstream to the Dam at Route 174/Glover Road Junction	SE
7	Old Chenango Canal	From Oriskany Creek upstream to Route 20 Bridge	WP
7	Oquaga Creek	From the new Route 17 bridge west of Deposit upstream 3 miles to the Old Route 17 bridge east of McClure	CR
7	Oriskany Creek	From Route 12B Bridge in Oriskany Falls upstream to Old Chenango Canal	WP

Inland Trout Stream Special Regulations

REGION	STREAM	REACH	CATEGORY
7	Skaneateles Creek	From the Jordan Road Bridge in the Village of Jordan upstream 10.2 miles to the Old Seneca Turnpike bridge north of the Village of Skaneateles	CR
7	West Br Delaware River	From NY/PA border upstream to 2 miles downstream of the Route 17 bridge at Deposit	W
7	West Br Delaware River	From Route 17 bridge at Deposit downstream 2 miles	CR
7	West Br Delaware River	From Route 17 bridge at Deposit upstream to Stilesville Weir	WP
7	West Br Limestone Creek	From confluence with Limestone Creek upstream to No. 2 West Rd	SE
8	Cayuta Creek	From Tioga County Line upstream to Swan Hill Road	SE
8	Cohocton River	From Veterans Ave. Bridge (Bath) upstream to County Route 39A (Atlanta)	SE
8	Cohocton River	From County Route 39A (Atlanta) upstream to source	WQ
8	Mill Creek	From confluence with Canaseraga Creek to County Route 90 (Patchinville)	WQ
8	Neil Creek	From confluence with Cohocton River upstream to the end of PFR section 1500 feet upstream of Mattoon Road	WQ
8	Oatka Creek	From Bowerman Road upstream to Union Street	WQ
8	Oatka Creek	From Union Street upstream 1.7 miles to Wheatland Center Rd	CR
8	Oatka Creek	From Wheatland Center Rd upstream to the confluence with Spring Creek	WQ
8	Oatka Creek	From Monroe County Line upstream to Circular Hill Road	SE
8	Spring Creek	From confluence with Oatka Creek upstream to source. Restrictions: Angling prohibited from 3:30 PM to 8:00 AM on Caledonia State Fish Hatchery property.	WQ

Inland Trout Stream Special Regulations

REGION	STREAM	REACH	CATEGORY
9	Cattaraugus Creek	From confluence with Elton Creek upstream to 1.0 miles upstream of Java Lake Road	SE
9	Clear Creek	From confluence with Conewango Creek upstream to bridge at Cockaigne Ski Area	WP
9	Clear Creek	From confluence with Cattaraugus Creek upstream to NYS Route 98 crossing near Phillipi Road	WP
9	East Koy Creek	From Wyoming County Line upstream to Green Bay Road	SE
9	Elm Creek	From confluence with Little Conewango Creek upstream to NYS Route 394	WQ
9	Elton Creek	From NYS Route 16 upstream to former bridge on Swanson Hill Road	WQ
9	Fenton Brook (aka Mud Creek)	From Conewango Creek upstream to County Route 6 downstream of Fancher Hill Road	WQ
9	Flynn (Spring) Brook	From confluence with Cattaraugus Creek upstream to Youngers Road	WQ
9	Genesee River	From Belmont Dam in Belmont upstream 1.0 mile upstream of County Route 29 near York's Corners	SE
9	Genesee River	From 1.0 mile upstream of County Route 29 near York's Corners upstream to NYS Route 19 bridge in Shongo	CR
9	Genesee River	From NYS Route 19 bridge in Shongo upstream to State Line	SE
9	Goose Creek	From NYS Route 474 in Ashville upstream to Wall Street	SE
9	Hosmer (Sardinia) Brook	From confluence with Cattaraugus Creek upstream to Genesee Road	WQ
9	Lime Lake Outlet	From confluence with Elton Creek upstream to Lime Lake	WP
9	Mansfield Creek	From 0.5 mi upstream of the western most County Rt 13 (Maples Rd) crossing upstream to Hinman Hollow Road crossing near Poverty Hill Road	WQ

Inland Trout Stream Special Regulations

REGION	STREAM	REACH	CATEGORY
9	McKinstry Creek	From confluence with Lime Lake Outlet upstream to source	WQ
9	North Branch Wiscoy Creek	From confluence with Wiscoy Creek upstream to NYS Route 362	WQ
9	The Ram	From confluence with Elm Creek upstream to NYS Route 394	WQ
9	Trout Brook	From confluence with Wiscoy Creek upstream to 0.1 miles upstream of Hillside Road	WQ
9	Wiscoy Creek	From confluence with Genesee River upstream to Flynn Road	WP

Finger Lakes and Tributary Regulations

FINGER LAKES REGULATIONS		
Water	Species	Regulation
All Finger Lakes	Northern Pike	May 1–Mar 15, Minimum Length-22", Daily Limit-5
	Walleye	May 1–Mar 15, Minimum Length-18", Daily Limit-3 (see Skaneateles Lake for exception)
	Brook Trout	Apr 1–Oct 15, Daily Limit-5 with no more than 2 longer than 12"
Canadice Lake, Canandaigua Lake, Conesus Lake, Hemlock Lake, Keuka Lake, and, Seneca Lake	Black Bass	June 15–Mar 15, Minimum Length-12", Daily Limit-5
		Mar 16–June 14, Catch and Release only, Artificial lures only
	Brown Trout, Rainbow Trout, Lake Trout, Atlantic Salmon	All year, Minimum Length-15", Daily Limit-5 in combination, Catch shall include no more than 1 Rainbow Trout or 3 Atlantic Salmon
Cayuga Lake	Brown Trout, Rainbow Trout, Lake Trout, Atlantic Salmon	All year, Minimum Length-15" except 18" for Atlantic Salmon, Daily Limit-5 in combination, Catch shall include no more than 3 Brown Trout, 3 Rainbow Trout, or 3 Atlantic Salmon
Honeoye Lake	Black Bass	June 15–Mar 15, Minimum Length-12", Daily Limit-5
		Mar 16–June 14, Catch and Release only, Artificial lures only
	Sunfish	All year, Minimum Length-8", Daily Limit-15
	Brown Trout, Rainbow Trout, Lake Trout, Atlantic Salmon	All year, Minimum Length-15", Daily Limit-5 in combination, Catch shall include no more than 1 Rainbow Trout or 3 Atlantic Salmon
	Alewife	Possession prohibited
Otisco Lake	Tiger Muskellunge	May 1–Mar 15, Minimum Length-36", Daily Limit-1
	Sunfish	All year, Minimum Length-8", Daily Limit-15
	Trout	All year, Minimum Length-12", Daily Limit-5

Finger Lakes and Tributary Regulations

FINGER LAKES REGULATIONS		
Water	Species	Regulation
Owasco Lake	Brown Trout, Rainbow Trout, Lake Trout, Atlantic Salmon	All year, Minimum Length-15", Daily Limit-5 in combination, Catch shall include no more than 3 Brown Trout, 3 Rainbow Trout, or 3 Atlantic Salmon
Skaneateles Lake	Brown Trout, Rainbow Trout, Lake Trout, Atlantic Salmon	All year, Minimum Length-15", Daily Limit-5 in combination, Catch shall include no more than 3 of any species
	Walleye	All Year, Minimum Length-12", Daily Limit-Any number
	Alewife	Possession prohibited

FINGER LAKES TRIBUTARIES REGULATIONS		
Water	Species	Regulation
All tributaries to Canadice Lake, Canandaigua Lake, Hemlock Lake, Keuka Lake, and Seneca Lake upstream to the first barrier impassable by fish	Brown Trout, Rainbow Trout, Lake Trout, Atlantic Salmon	April 1–Dec 31, Minimum Length-15", Daily Limit-3 in combination, Catch shall include no more than 1 Rainbow Trout
All tributaries to Owasco Lake, Otisco Lake and Skaneateles Lake upstream to the first barrier impassable by fish, except Spafford Creek	Brown Trout, Rainbow Trout, Lake Trout, Atlantic Salmon	April 1–Dec 31, Minimum Length-15", except 9" for Brown Trout, Daily Limit-3 in combination
All tributaries to Cayuga Lake upstream to the first barrier impassable by fish, except Fall Creek	Brown Trout, Rainbow Trout, Lake Trout, Atlantic Salmon	April 1–Dec 31, Minimum Length-15", except 18" for Atlantic Salmon, Daily Limit-3 in combination
Fall Creek (Cayuga Lake) from the downstream edge of the railroad bridge below Rt. 13 to Ithaca Falls	Brown Trout, Rainbow Trout, Lake Trout, Atlantic Salmon	April 1–Dec 31, Minimum Length-15", except 18" for Atlantic Salmon, Daily Limit-3 in combination
		Jan 1–Mar 31, Catch and Release only, Artificial lures only
		Angling prohibited between sunset and sunrise from Oct 1–May 15

Finger Lakes and Tributary Regulations

FINGER LAKES TRIBUTARIES REGULATIONS

Water	Species	Regulation
Spafford Creek <i>(Otisco Lake)</i>	Trout	April 1–Oct 15, Daily Limit-5—with no more than 2 longer than 12"
Tributaries to all Finger Lakes <i>(except Conesus Lake and Honeoye Lake) upstream to the first barrier impassable by fish</i>	All other species	Open season, daily limit and minimum length regulations that are in effect for the Finger Lakes

Additional Tributary Regulations

- A. Any action to frighten fish and move them from concealment, including herding, driving, kicking, and stoning is prohibited.
- B. Angling is prohibited from Jan 1–Mar 31, except for those stream sections listed to the right and Fall Creek downstream of Ithaca Falls.
- C. Angling is prohibited between sunset and sunrise from April 1–May 15 and Oct 1–Dec 31, except for those stream sections listed to the right.
- D. Angling is prohibited all year in Cayuga Inlet for a distance of 500 feet up and downstream of the dam located within the flood control channel and Coy Glenn Creek from Cayuga Inlet up to and including the second check dam in Tompkins County.
- E. Use of more than one line with a single hook point is prohibited, except for those stream sections listed to the right.
- F. Possession of hooks with a gap greater than ½" is prohibited, except for those stream sections listed to the right.
- G. Possession of landing nets larger than 50 inches around the frame or with handles longer than 20 inches is prohibited, except for those stream sections listed to the right.

Stream Sections for Which Additional Tributary Regulations B, C, D, E, F, and G Do Not Apply:

- Trout season is closed Jan 1–March 31 in these sections.
- **Barge Canal** from Seneca Lake upstream to the northernmost Rte. 14 bridge in Montour Falls, Schuyler County
 - **Cayuga Inlet and flood control channel** from Cayuga Lake upstream to posted "NO FISHING" boundary below the fishway in Tompkins County
 - **Fall Creek** from Cayuga Lake to the downstream edge of the railroad bridge below Rte. 13 in Ithaca, Tompkins County
 - **Guyanoga Creek** from Keuka Lake upstream to Rte. 54A bridge, Yates County
 - **Old Seneca Inlet** in the southeast corner of Seneca Lake upstream of State Rte. 414
 - **Owasco Inlet** from Owasco Lake upstream 0.7 miles to marked boundary at old railroad bed in Cayuga County
 - **Sucker Brook** from Canandaigua Lake upstream in Ontario County
 - **West River** from Canandaigua Lake upstream in Ontario County
 - **Yawgers Creek** from Cayuga Lake upstream to the abandoned Lehigh Valley railroad bridge in Cayuga County

Great Lakes and Tributaries Regulations

These regulations apply to the New York waters of Lake Erie, the Upper and Lower Niagara River, Lake Ontario, the St. Lawrence River, and designated sections of the tributaries to these waters.

- Tributary sections subject to these regulations are generally defined as the bridge closest to the mouth upstream to the 1st barrier impassable to fish.
- Tributaries with different boundaries and exemptions are listed separately.
- Note that there are also seasonal tackle restrictions and restrictions on night fishing in the tributaries.

REGULATIONS FOR ALL GREAT LAKES & TRIBUTARIES

Regulations for all Great Lakes waters, including Lake Erie, Lake Ontario, the Upper and Lower Niagara River, St. Lawrence River, and tributaries to these waters.

At all times:

- ▶ Snatching (page 69) and attempting to snatch is prohibited.
- ▶ All foul-hooked fish must be immediately released without unnecessary injury.
- ▶ Use or possession of gaff hooks is prohibited, except when ice fishing.
- ▶ Any action to frighten fish and move them from concealment, including herding, driving, kicking, or stoning, is prohibited.
- ▶ The use of eggs for chumming is prohibited (page 76).

LAKE ERIE AND TRIBUTARIES REGULATIONS

Lake Erie tributary seasonal fishing regulations

Portions of Lake Erie tributaries where seasonal regulations apply

CATTARAUGUS CREEK

From the Aldrich Street Extension Bridge in Gowanda upstream to the Springville Dam

BUFFALO RIVER AND ITS TRIBUTARIES

From the I-90 (NYS Thruway) bridge upstream to 1st barrier impassable by fish

ALL OTHER LAKE ERIE TRIBUTARIES

From bridge closest to the mouth upstream to the 1st barrier impassable by fish

Season

Seasonal fishing regulations apply Sept 1–Mar 31.

Fishing hours

Fishing only permitted 1/2 hour before sunrise to 1/2 hour after sunset (fishing at night is prohibited).

Hook regulations

- ▶ The distance between a hook's shaft and point cannot exceed 1/2 inch.
- ▶ Hooks attached to any lure must be free-swinging, except on an artificial fly (page 68) or jigs.

Great Lakes and Tributaries Regulations

LAKE ERIE AND TRIBUTARIES SEASONS AND LIMITS*

Species	Open Season	Minimum Length	Daily Limit
Brown Trout, Rainbow Trout (including Steelhead), Coho Salmon, Chinook Salmon	All year	12"	3 in any combination
Lake Trout	All year	12"	1
Brook Trout	April 1-Oct 15	none	5
Northern Pike	May 1–Mar 15	22"	5
Walleye	May 1–Mar 15	15"	6
Muskellunge, Tiger Muskellunge	June 15–Dec 15	54"	1
Black Bass	December 1–June 14	20"	1
	June 15–Nov 30	12"	5

* Regulations apply from Lake Erie upstream to the Springville Dam for Cattaraugus Creek.

Catch and Release Regulations for Chautauqua and Eighteenmile Creeks

Catch and Release Regulations

- ▶ Catch and Release only for trout and salmon in creek sections described below
- ▶ Only Artificial lures can be used in Catch and Release sections
- ▶ Seasonal regulations regarding hooks apply.

Stream reaches where Catch and Release regulations apply

CHAUTAUQUA CREEK

- ▶ From the bridge on South Gale St. upstream 1.3 miles to the upper Village of Westfield water intake dam

EIGHTEENMILE CREEK (ERIE COUNTY)

- ▶ Main branch of the creek (excluding South Branch) contained within Eighteenmile Creek County Park

NIAGARA RIVER REGULATIONS

UPPER NIAGARA RIVER AND TRIBUTARIES SEASONS AND LIMITS			
Species	Open Season	Minimum Length	Daily Limit
Brown Trout, Rainbow Trout (Including Steelhead), Coho Salmon, Chinook Salmon	All year	None	3 in any combination
Lake Trout	All year	12"	1
Brook Trout	April 1–Oct 15	none	5
Northern Pike	May 1–Mar 15	22"	5
Walleye	May 1–Mar 15	15"	6
Muskellunge and Tiger Muskellunge	June 15–Dec 15	54"	1
Black Bass (north of the Peace Bridge)	Statewide Angling Regulations Apply		
Statewide gear restrictions apply in the Upper Niagara River and tributaries.			

LOWER NIAGARA RIVER AND TRIBUTARIES SEASONS AND LIMITS			
Species	Open Season	Minimum Length	Daily Limit
Brown Trout, Rainbow Trout (including Steelhead), Coho Salmon, Chinook Salmon	All year	15", except 21" for Rainbow Trout	3 (Trout & Salmon) in any combination, not to include more than 1 Atlantic Salmon, 2 rainbow trout (steelhead), or 2 Lake Trout
Lake Trout	Dec 1–Sept 30	None, except only 1 Lake Trout may be between 25" and 30"	
Atlantic Salmon	All year	25"	
Brook Trout	April 1–Oct 15	none	5
Muskellunge and Tiger Muskellunge	June 15–Dec 15	54"	1
Northern Pike	May 1–Mar 15	22"	5
Walleye	May 1–Dec 31	18"	3
	Jan 1–Mar 15	18"	1
American Eel	Closed	Possession prohibited	
Statewide gear restrictions apply in the Lower Niagara River and tributaries.			

LAKE ONTARIO, ST. LAWRENCE RIVER, AND TRIBUTARIES REGULATIONS

LAKE ONTARIO, ST. LAWRENCE RIVER, AND THEIR TRIBUTARIES* SEASONS AND LIMITS**

Species	Open Season	Minimum Length	Daily Limit
Brown Trout, Rainbow Trout (including Steelhead), Coho Salmon, Chinook Salmon	All year	15", except for Rainbow Trout or Steelhead: 21" in the lake and 25" in tributaries	3 in combination, not to include more than 2 Rainbow Trout (or Steelhead) in the lake, and not to include more than 1 Rainbow Trout (or Steelhead) and 1 Brown Trout in the tributaries
	Except 9" and 3 fish daily for Brown Trout in Irondequoit Creek upstream of the south side of Rte. 286 bridges, Lindsey Creek, and the Black River from Dexter Dam to Mill Street Dam (Jefferson County)		
Lake Trout	Dec 1–Sept 30	None (except no more than 1 shall be between 25" and 30")	2
Atlantic Salmon	All year	25"	1
Brook Trout	April 1–Oct 15	none	5
Northern Pike (Lake Ontario)	May 1–Mar 15	22"	5
Northern Pike (St. Lawrence River and tributaries downstream of Tibbets Point)	May 1–Mar 15	22"	3
Black Bass	Statewide Species Regulations apply, except that fishing for black bass (including Catch and Release) is prohibited Dec 1–June 14 in Lake Ontario and tributaries in Jefferson Co. and the St. Lawrence River and tributaries		
Walleye	May 1–Mar 15	18"	3
Muskellunge and Tiger Muskellunge	June 15–Dec 15	54"	1
American Eel	Closed	Possession prohibited	
Yellow Perch	All year	None	50, except Yellow Perch may be taken in any number in Jefferson County, except Sandy Pond

* These species seasons and limits do not apply to St. Lawrence River tributaries in Clinton and Franklin counties. See Statewide Species Regulations and Region 5 special regulations for these tributaries.

** See Region 6 special regulations for seasonal closures on the Oswegatchie and Grasse rivers.

Great Lakes and Tributaries Regulations

Lake Ontario Tributary Seasonal Fishing Regulations, Except the Lower Niagara River and Salmon River

Lake Ontario Waters and Tributaries Exempted from Seasonal Tributary Regulations

The following waters are exempt from Lake Ontario tributary seasonal fishing regulations:

BUCK POND

- ▶ Lake Ontario Seasons and Limits apply

CRANBERRY POND

- ▶ Lake Ontario Seasons and Limits apply

IRONDEQUOIT BAY

- ▶ Lake Ontario Seasons and Limits apply

LONG POND

- ▶ Lake Ontario Seasons and Limits apply

NIAGARA RIVER

- ▶ Upper Niagara River or Lower Niagara River Regulations apply

ROUND POND

- ▶ Lake Ontario Seasons and Limits apply

SALMON RIVER:

- ▶ See page 66

SODUS BAY

- ▶ Lake Ontario Seasons and Limits apply

SOUTH SANDY POND

- ▶ Lake Ontario Seasons and Limits apply

Sections of Lake Ontario Tributaries Subject to Seasonal Tributary Regulations

The following tributary sections are subject to seasonal fishing regulations—described below—during the period Sept 1–Mar 31:

BLACK RIVER

- ▶ From the upstream tip of the lowermost island to Mill St. Dam in Watertown

CATFISH CREEK

- ▶ From the mouth upstream to the dam at County Rte. 1

EIGHTEENMILE CREEK (NIAGARA COUNTY)

- ▶ From the Rte. 18 bridge upstream to Burt Dam

OAK ORCHARD CREEK

- ▶ From the 1st power lines that are 1.9 miles upstream (south) of the Rte. 18 bridge upstream to Waterport Dam

GENESEE RIVER

- ▶ From the State Rte. 104 bridge upstream to the Lower Falls

OSWEGO RIVER

- ▶ From the Utica St. Bridge upstream to the Varick Dam

STERLING CREEK

- ▶ From Old State Rd. to the 1st impassable barrier upstream of Rte. 104A

STERLING VALLEY CREEK

- ▶ From McIntyre Rd. to the 1st impassable barrier upstream of Rte. 104A

ALL OTHER TRIBUTARIES

- ▶ From the bridge closest to the mouth upstream to the 1st barrier impassable by fish

Great Lakes and Tributaries Regulations

Lake Ontario Tributaries with Seasonal Closures

LITTLE SANDY CREEK (OSWEGO COUNTY)

- ▶ Fishing is prohibited from Mar 16–April 30—from the State Rte. 3 bridge downstream 850 feet to the intersection of the channelized area and upstream 1.0 mile from the bridge to the Public Fishing Rights section.

Lake Ontario Tributary Seasonal Fishing Regulations

SEASON

Seasonal fishing regulations apply Sept 1 to Mar 31.

FISHING HOURS

Fishing from 1/2 hour after sunset to 1/2 hour before sunrise is prohibited, except in the Black River (Jefferson County) from Lake Ontario upstream to the Rte. 180 bridge in Dexter, where fishing is permitted at all times.

HOOK, LEADER, AND WEIGHT REGULATIONS

Hooks:

- ▶ Only one hook with a single hook point is permitted, except as outlined below for floating lures and artificial flies.
- ▶ Hooks attached to any lure must be free-swinging, except on an artificial fly (page 68) or jigs.
- ▶ An artificial fly (page 68) can only have a single hook with no more than two hook points. Tandem artificial flies are not permitted.
- ▶ The gap between a hook's shaft and point cannot exceed 1/2 inch.
- ▶ Use of hooks with added weight is prohibited, except artificial flies (page 68) and jigs weighing no more than 1/8 oz.

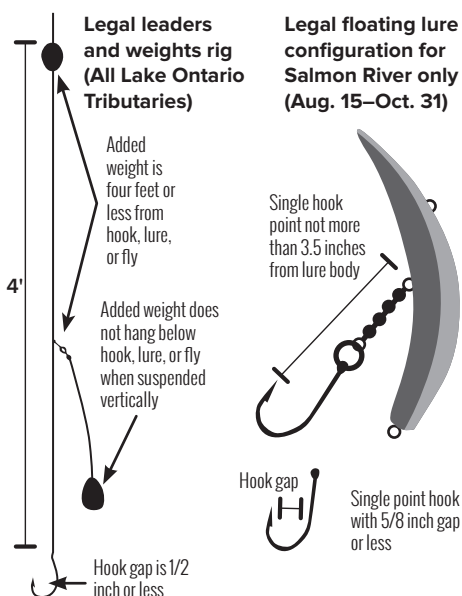
Floating lures:

- ▶ A floating lure is a lure that floats at rest in water with or without any weight attached to the lure, leader, or line.
- ▶ Can have multiple treble hooks.
- ▶ Any hooks on a floating lure must be attached to the lure by a ring or swivel, except for artificial flies.
- ▶ The distance between the body of a floating lure and the points of any attached hooks shall not exceed 1 1/2 inches.

Leaders and weights:

- ▶ The distance between the hook, artificial fly or lure, and any weight attached to the line or leader, whether fixed or sliding, shall not exceed four feet.
- ▶ Any weight added to the line, leader, swivels, artificial fly, or lure shall not hang lower than the hook when the line or leader is held vertically.

EXAMPLES OF LEGAL SEASONAL FISHING RIGS



Great Lakes and Tributaries Regulations

Special Regulations by Section for Salmon River and Tributaries (Oswego County)

SALMON RIVER DOWNSTREAM OF RTE. 52 BRIDGE IN ALTMAR	
From the upstream-most navigation buoy located between the breakwalls at the mouth of the river upstream to the County Rte. 52 bridge in Altmar.	
Effective Dates	Regulations
April 15–Aug 14	Statewide gear restrictions apply.
Aug 15–April 14	<ul style="list-style-type: none">Fishing is prohibited at night from ½ hr. after sunset to ½ hr. before sunrise, except as permitted below.Only one hook with a single hook point and a gap not exceeding ½ inch is permitted, except on floating lures as noted below.Hooks attached to any lure, except an artificial fly, must be free swinging and unweighted. Artificial flies with no more than 1/8 oz. of added weight may be used. The method by which weight is added to a hook does not affect classification as an “artificial fly” provided the conditions of the definition of an artificial fly (page 68) are met.The distance between the hook, artificial fly, or lure, and any weight attached to the line or leader, whether fixed or sliding, shall not exceed 4 ft.Weight shall not be added to the line, leader, swivels, artificial fly, or lure in any manner that the weight hangs lower than the attached hook when the line is suspended vertically from the rod.
Aug 15–Oct 31	<p>Additional Regulations for Floating Lures Apply</p> <ul style="list-style-type: none">A bead chain may be attached to the floating lure with a ring.The bead chain may not exceed a distance of 3 1/2 inches between the body of the floating lure and the hook point.1 hook with a single hook point and a gap of no more than 5/8 in. may be attached to the bead chain or directly to the lure.
Nov 1–April 14	Multiple single, double, and treble hooks are permitted on floating lures.
April 1–Aug 14	Fishing at night is permitted from Lake Ontario to the Rte. 3 bridge.

Salmon River fly fishing Catch and Release sections

FISHING HOURS, SEASON DATES, AND LOCATIONS

- **Angling Permitted:** From 1/2 hour before sunrise to 1/2 hour after sunset.
- **Lower Fly Section: Open Sept 15–May 15**, from the County Rte. 52 Bridge in Altmar upstream 0.25 mile to the marked boundary at Beaverdam Brook.
- **Upper Fly Section: Open April 1–Nov 30** from a marked boundary upstream of the New York State Fish Hatchery property to a marked boundary 0.6 miles upstream at the Lighthouse Hill Reservoir tailrace.
- Fishing is prohibited outside the open season.

CATCH AND RELEASE

All fish must be immediately released without unnecessary injury.

TACKLE RESTRICTIONS

Tackle is restricted to a traditional fly rod, fly reel, fly line, and artificial fly (page 68). Restrictions on fly lines, flies, attractors, leaders, and supplemental weight are as follows:

Fly lines:

- ▶ Use of less than 20 feet of a floating, sinking, or combination floating/sinking fly line or shooting head immediately behind the leader and in front of any running line or other backing is prohibited.
- ▶ **From May 1–August 31:** Floating fly lines only.
- ▶ **From Sept 1–April 30:** Floating, sinking, and sink tip fly lines are permitted.

Flies:

- ▶ **From May 1–August 31:** a single unweighted artificial fly having one hook point with a 1/2 inch maximum gap only is permitted.
- ▶ **From Sept 1–April 30:** a single unweighted or weighted artificial fly with no more than 1/8 oz. added weight, having one hook point with a 1/2 inch maximum gap only, is permitted.

Attractors:

- ▶ The use of added baits or attractors such as, but not limited to, fish eggs, insects, beads, spoons, spinners, plugs, or similar devices on the line above the artificial fly is prohibited.

Leaders:

- ▶ The total length of the leader, including the tippet, shall not exceed 15 feet.
- ▶ **From May 1–Aug 31:** Sinking and metal leaders are prohibited.

Additional weight:

- ▶ **From May 1–Aug 31:** The use of supplemental weight, such as split shot, sinkers, metal leaders, twist-ons, or swivels attached to the leader, tippet, fly line or fly, is prohibited.
- ▶ **From Sept 1–April 30:** The use of supplemental weight is permitted with the following restrictions:
 - The combined weight of any supplemental weight and fly may not exceed 1/8 of an ounce.
 - The maximum distance between the artificial fly and any added weight to the line, leader, or tippet shall not exceed four feet.
 - Weight added to the line, leader, swivels, or artificial fly in any manner such that the weight hangs lower than the attached fly is prohibited.

Beaverdam Brook in Altmar fishing closure

Fishing in Beaverdam Brook and its tributaries, Oswego County, is prohibited from their mouths to the upstream boundary of the Salmon River Hatchery property.

DEFINITIONS

Angling means taking fish by hook and line. This includes bait and fly fishing, casting, trolling, and the use of landing nets to complete the catch. Snatching, lifting, hooking, and the use of tip-ups are not angling.

Artificial lures or bait means artificial imitations of natural bait, man-made flies, spinners, spoons, plugs, jigs, and other lures, including those that may contain some natural substances such as deer hair and feathers.

Artificial fly means a hook with no more than two points dressed with feathers, hair, thread, tinsel, or any similar material to which no additional hooks, spinners, spoons, or similar devices have been added.

Black Bass means both largemouth and smallmouth bass.

Blind snatching means the taking of fish by snatching when the fish is not visible to the angler.

Catch and Release means catching and immediately releasing the caught fish without harm.

Chumming means depositing in the water any substance, not attached to a hook, which may attract fish.

Closed Season means the time during which fish may not legally be taken.

Fishing means the taking, killing, netting, capturing, or withdrawal of fish by any means. This includes every attempt to take fish, plus assisting another person in taking or attempting to take fish.

Foul-hooked means not hooked in the mouth.

Hook gap means the distance from the shank to the point of the hook.

Ice fishing means fishing through the ice on frozen waters.

Ice-fishing line means any device used for fishing through the ice, including, but not limited to, hand line, tip-up, tip down, etc.

Inland Trout Streams shall mean all rivers and streams inhabited by trout except as follows:

- Great Lakes tributaries to the 1st impassible barrier;
- Finger Lakes tributaries to the 1st impassible barrier;
- Lake Champlain tributaries to the 1st impassible barrier;
- Tidal stream reaches

Marine and Coastal District includes waters of the Atlantic Ocean within 3 miles of the coastline and all other tidal waters, including the Hudson River upstream to the Mario M. Cuomo Bridge.

Minimum length means the greatest possible length measured from the tip of the fish's snout to the tip of the tail. The mouth may be open or closed and the tail may be spread or compressed in order to achieve the greatest length.

Natural bait means all baits which entice or might be ingested or swallowed by fish including, but not limited to, fish (dead or alive), fish eggs, worms, shellfish, crustacea, amphibians (frogs and toads), insects (including all stages of development, such as larvae, pupae, etc.), pork rinds, liver, meat, corn or other vegetable matter, tapioca, candy, cheese, bread and putty, or dough-like scented baits.

Night means ½ hour after sunset to ½ hour before sunrise.

Non-offset (in-line) circle hook means a fishing hook designed and manufactured so that the point and barb of the hook are not offset from the plane of the shank and bend, and the point is turned perpendicularly back towards the shank to form a circular or oval shape.

Open Season means the time during which fish may be legally taken.

Snatching means taking fish not attracted by bait or artificial lure with hooks, gangs, or similar devices whether baited or not. Snagging, lifting, and single hook snagging are types of snatching.

Spearfishing or "spear" means taking a fish with a hand-propelled single or multiple pronged pike, blade, or harpoon. It does not include the mechanically propelled device commonly called a spear gun.

Sunfish means bluegill, pumpkinseed, and redbreast sunfish.

Trout means brook trout, brown trout, rainbow trout, and hybrids of these species, including splake.

TAKING AND POSSESSION OF FISH

Possession and daily limits

- A person may not have in possession, or intentionally kill or injure, fish other than the sizes specified and allowed for that species on a given water. Any fish in a vehicle used to access a given water counts towards the number and sizes of fish in possession.
- A person may not possess, kill, or unnecessarily injure fish in excess of the daily limit for that species.
- Any fish an angler catches and immediately releases uninjured will not be counted as part of the daily limit for that species.
- A person may continue to fish for a species while in possession of a daily limit for that species provided all fish of that species subsequently caught are immediately returned to the water. See below for special provisions made for largemouth and smallmouth bass.

- A single, uninjured largemouth bass or smallmouth bass that an angler is landing, measuring, or in the process of releasing from a recirculating or aerated livewell is not considered to be part of the daily limit.

Catch and Release

- Catch and Release angling is only permitted during the open season for a particular fish species.
- Measuring, weighing, and photographing the fish are permitted as long as the fish is not removed from the water for an extended period or handled in a manner that could cause harm.
- Fish may not be placed in a bucket, tub, livewell, or on a string or any other holding device.
- Catch and Release angling for endangered or threatened fish species is prohibited.

Closed season restriction

A person may not fish for a species (even if immediately released) during the closed season for that species on a given water. Fish caught during the closed season must be unhooked and released immediately. They may not be handled for any other purpose.

Endangered and threatened fish

It is illegal to fish for, or possess, fish that are officially listed by DEC as endangered or threatened:

- **Endangered:** silver chub, bluebreast darter, deepwater sculpin, gilt darter, pugnose shiner, round whitefish, shortnose sturgeon, Atlantic sturgeon, and spoonhead sculpin

General Regulations

- **Threatened:** eastern sand darter, lake chubsucker, lake sturgeon, northern (longear) sunfish, mooneye, gravel chub, banded sunfish, longhead darter, swamp darter, spotted darter, and mud sunfish

Any unintentionally caught threatened or endangered fish species must be unhooked and released immediately. They may not be handled for any purpose other than removing the hook and placing them back into the water.

Foul hooking

All foul-hooked trout, lake trout, coho salmon, Chinook salmon, pink salmon, and Atlantic salmon must be released without unnecessary injury to the fish.

Snakehead

Any snakehead caught while angling cannot be released back into the water. They must be immediately killed and reported to DEC.

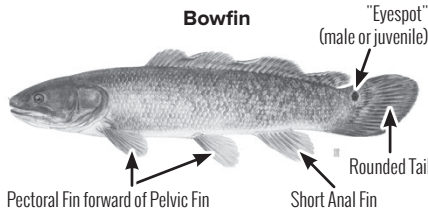
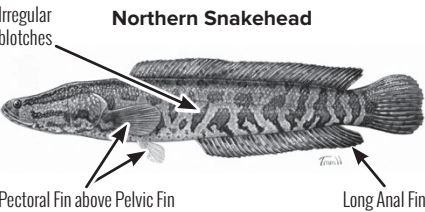
Use of gaffs

Use or possession of gaffs or gaff hooks is prohibited when fishing in freshwater, including the Hudson River upstream of the Mario M. Cuomo Bridge, except when ice fishing or while bowfishing.

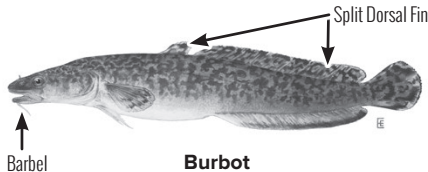
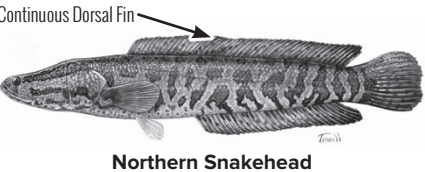
Snakehead Alert

Northern snakehead and other snakehead species are listed as species dangerous to native fish populations in New York, and their possession is strictly prohibited. These fish can seriously damage native fish communities. Any snakehead caught while angling cannot be released back into the water. It must be immediately euthanized and reported to DEC. Kill it, freeze it, and report your catch to a local DEC office. Note that the northern snakehead can be confused with burbot and bowfin, two species native to New York. To determine if you have indeed caught a northern snakehead, review the distinguishing characteristics below.

Distinguishing a Northern Snakehead from a Bowfin



Distinguishing a Northern Snakehead from a Burbot



METHODS OF TAKING FISH

Angling

Angling means taking fish by hook and line. This includes bait and fly fishing, casting, trolling, and the use of landing nets to complete the catch.

- Anglers must be in immediate attendance when their lines are in the water.
 - ▶ The use of set lines, where the angler is not in immediate attendance, is prohibited.
- An angler may operate no more than 3 lines with or without a rod.
 - ▶ each line is limited to not more than 5 lures or baits or a combination of both.
 - ▶ in addition, each line shall not exceed 15 hook points in any combination of single, double, or treble hooks.
- Snatching, lifting, hooking, and the use of tip-ups are not angling.

Ice fishing

Ice fishing (see Definitions) is permitted unless specifically prohibited in New York, except for Essex, Franklin, Fulton, Hamilton, Herkimer, Lewis, St. Lawrence, Warren, and Washington counties where ice fishing is prohibited in waters inhabited by trout, unless specifically permitted.

Ice fishing regulations

- No more than 7 ice fishing lines (see Definitions) in any combination of devices may be used, unless otherwise noted in Special Regulations.
- No person shall operate an ice fishing line that has more than 5 lures or baits in total or has more than 15 hook points in total.
- The operator must be in immediate attendance when ice fishing lines are in the water.
- Between May 1 and Nov 14, only hand lines (including rod and reels) may be used while ice fishing.

Ice shanties

Ice shanties must be marked on the outside with the owner's name and address in letters at least 3 inches high. Shanties must be removed from all waters by Mar 15 to prevent them from falling through the ice and becoming hazards to navigation.

For the purposes of this regulation, portable shelters used and removed from the ice on a daily basis are not considered ice shanties.

Bowfishing

- Carp may be taken by a longbow (recurve or compound) in any number or size from May 15–Sept 30 from any water where fishing and the discharge of a bow is permitted.
- A person must have either a fishing license, a hunting license, or be entitled to fish without a fishing license to take carp with a longbow.
- No other fish may be taken with a bow.
- Taking fish by a crossbow is prohibited at all times.
- The Fish Carcass Disposal Law (page 74) must be followed.

Snatching

- The taking of fish by snatching or blind snatching (Page 68) is prohibited at all times.

Spearing

- The taking of fish by spear or spear guns is prohibited at all times.
- Use of spearguns is prohibited in the freshwaters of New York.
- Spears may not be possessed on any water in the Adirondack Park or Lake George or within 200 feet of the high water mark of these waters.

General Regulations

Taking baitfish

See Baitfish Regulations (page 77).

Use of fish traps

Fish (minnow) traps may only be used to take baitfish. See Baitfish Regulations (page 77) for minnow trap specifications.

Use of nets

Nets may only be used to take fish as follows:

- The use of a landing net to complete the catch while angling is permitted.
- Personally harvested baitfish may be collected with the various nets as described on page 79.
- Smelt, suckers, alewives, and blueback herring may be collected by dip nets as described on pages 72-73.
- No other use of nets to collect fish is permitted.

Dip nets

Any person who has a fishing license, or is entitled to fish without a license, may operate one dip net as specified in the tables below. These are the only circumstances where dip-netting is permitted, unless a commercial license has been obtained.

See page 16 for regulations specific to dip net use for alewife and blueback herring on the Hudson River.

Note: Smelt, suckers, alewives, and blueback herring are the only fish that may be taken with a dip net.

SUCKERS MAY BE TAKEN IN A DIP NET NOT EXCEEDING 14 INCHES IN DIAMETER, OR 13 X 13 INCHES IF SQUARE, AS FOLLOWS:			
Water	Open Season	Daily Limit	Tributaries
Cayuga Lake	All year	Any number	All tributaries from the lake upstream to the 1st impassable barrier by fish
Seneca Lake	All year	Any number	All except Catharine Creek
Canandaigua Lake	All year	Any number	All except Naples Creek, where netting is prohibited upstream of the old Lehigh Valley Railroad bridge
Hudson River upstream to Troy Dam	All year	Any number	All from the river upstream to the 1st barrier impassable by fish

SMELT MAY BE TAKEN IN ANY SIZE DIP NET AS FOLLOWS:

Water	Open Season	Daily Limit	Tributaries
Lake Erie Lake Ontario Niagara River	All year	8 quarts	All from the lake upstream to the 1st barrier impassable by fish

SMELT MAY BE TAKEN IN A DIP NET NOT EXCEEDING 14 INCHES IN DIAMETER, OR 13 X 13 INCHES IF SQUARE, AS FOLLOWS:

Water	Open Season	Daily Hours & Limit	Tributaries
Tupper Lake	All year	Anytime/ 8 quarts	Lake and Bog River upstream to Rte. 421
Canandaigua Lake Canadice Lake Hemlock Lake Keuka Lake Seneca Lake Cayuga Lake Owasco Lake	All year	Anytime/ 8 quarts	All from lake upstream to the 1st barrier impassable by fish Exceptions: no dipping in Catharine Creek and L'Hommedieu Diversion channel (Seneca Lake), and upstream of old Lehigh Valley Railroad bridge at Naples Creek (Canandaigua Lake)
Indian Lake Fulton Chain (except Seventh Lake) East Caroga Lake West Caroga Lake	April 1–May 15	5 AM to 10 PM 8 quarts	All from the lake upstream to the 1st barrier impassable by fish. No dipping in Mead Creek from the mouth upstream to State Rte. 29A
Hudson River from Mario M. Cuomo Bridge upstream to the Troy Dam	All year	Anytime/Any number	All from the river upstream to the 1st barrier impassable by fish

REGULATIONS FOR HARVESTED FISH

Fish cleaning

- All legally harvested fish may be gilled or gutted while on the water.
- Possession of the following fish that have been cut, dismembered, filleted, skinned, or otherwise altered so that the species and total length of such fish cannot be easily determined is prohibited:
 - ▶ Walleye,
 - ▶ Black Bass,
 - ▶ Brook trout,
 - ▶ Lake trout, and
 - ▶ Atlantic salmon.
- Other species of fish may be filleted provided that the skin is not removed from the fillets.

Fish carcass disposal

- It is illegal to discard any fish carcass, or parts thereof, into the freshwaters of the state within 100 feet of shore or upon any public or private lands contiguous to and within 100 feet of such water, except:
- On private lands by the owners of such lands;
 - If properly disposing into suitable garbage or refuse collection systems or by burial;
 - Where incidental cleaning of fish for consumption is permitted. However, resulting waste may not be disposed of within 100 feet of any public launching or docking site unless into a suitable refuse collection system; and
 - Fish required to be returned to the water by regulation or law.

Transportation

Transportation of fish is permitted as follows:

Fish caught in New York State

- Salable fish (page 75) may be transported in any number.
- No more than two days' legal take of nonsalable fish (page 75) may be transported unless a permit is obtained from a DEC Regional Office, or the fish are frozen, processed, and packaged for storage.
- Smelt, suckers, alewives, and blueback herring taken for human consumption purposes only may be transported at any time.
- Baitfish transportation regulations can be found on page 78.

Fish caught outside of New York State

Fish caught outside of New York may be transported into New York in any manner, except parcel post, in the number that may be legally exported from the place of taking.

Non-salable fish transported by carrier

A tag must be attached showing the name and address of both the taker and consignee, and the contents of the package.

PURCHASE AND SALE OF FISH

Fish that are salable

Fish that are salable at any time include those species in the **Statewide Seasons and Limits** table for which there is no closed season and no minimum length. A baitfish license is required to sell baitfish in New York.

Exceptions:

The following fish only if taken outside of New York State:

- ▶ Coho, Chinook, and pink salmon,
- ▶ Atlantic salmon,
- ▶ Lake trout,
- ▶ Pickerel,
- ▶ Crappie,
- ▶ Northern pike, and
- ▶ Walleye.

Additional regulations may apply to the sale of these imported fish; contact a DEC Regional Office for more information.

Exception: American eel is the only fish taken from the Quebec portion of Lake Champlain and the Richelieu River that may be transported into and sold in New York State.

Fish that are non-salable

Fish that are non-salable are fish that have a minimum length or a closed season.

Exceptions:

- Black bass, Atlantic salmon, muskellunge, and trout taken on a licensed fishing preserve or private hatchery and properly tagged or documented may be sold
- Sale of catfish taken in Lake Ontario and its tributaries upstream to the 1st barrier impassable by fish and in the St. Lawrence River is prohibited.
- Sale of American eel from the Hudson, Harlem, and East rivers is prohibited, except for use as bait.
- Eggs taken from Chinook salmon and coho salmon caught in Lake Ontario, the St. Lawrence River, or their tributaries upstream to the 1st impassable barrier may be sold only by sport fishermen for use as bait.

NATURAL BAITS OTHER THAN BAITFISH

Salamanders and snakes

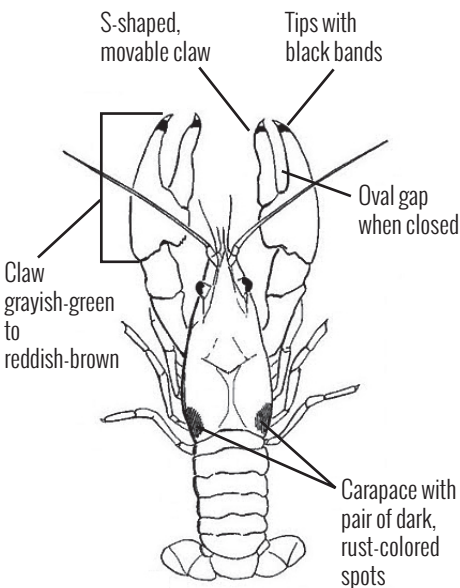
Native salamanders and snakes cannot be collected or used as bait.

Aquatic insects

No aquatic insect (or any insect that lives in the water during any of its life stages) shall be taken from waters inhabited by trout, or from the banks of those waters at any time.

Rusty crayfish

- Rusty crayfish may not be purchased and/or transported to a waterbody (page 77) for use as bait or to be released.
- Rusty crayfish may not be transported away from or within a waterbody (page 77).



Fish eggs

- No person shall possess more than one quart total of fish eggs from

- ▶ Trout,
- ▶ Lake trout, or
- ▶ Atlantic salmon

while on the waters of the state or the shores thereof. Fish eggs which are still inside the carcass of an intact, legally caught and possessed fish shall not be counted towards the one-quart total.

- No person shall take or attempt to take any fish by means of chumming (page 68) with fish eggs.
- Commercially packaged trout eggs produced in a hatchery under permit from the DEC may be used as bait. The trout eggs must be packaged in a container that clearly indicates the name of the producer and name of the hatchery where the trout eggs were produced.

Taking and possession of frogs

- Any person who has a hunting or fishing license or is entitled to fish without a license may take frogs with a spear, club, hook, or by hand.
- A small game hunting license is required to take frogs with a gun or a longbow.
- Frogs may be taken in any number and at any time from June 15–Sept 30, except that no person shall use a gun to take frogs between sunset to sunrise.
- Frogs may be imported, bought, and sold at any time. An importer must keep a record of names and addresses of buyers and sellers.

Exception: Leopard frogs may not be taken in NYC, Nassau County, or Suffolk County. Northern cricket frogs or eastern spadefoot toads may not be taken anywhere in New York State.

BAITFISH REGULATIONS

Waters where the use of baitfish is prohibited

Waters where the use of baitfish is prohibited can be found in the Special Regulations (pages 7-67).

Waterbody definition

For the purposes of the Baitfish Regulations section:

Waterbody shall mean any lake, river, pond, stream, or any other distinct mass of water existing in the State of New York, whether publicly or privately owned, including the banks and shores thereof. A waterbody shall also include all tributaries upstream to the 1st barrier impassable to fish, including the banks and shores thereof. For the purposes of this definition, locks and dams shall be considered impassable barriers. In addition, each of the following 12 combined waterbodies, including all tributaries up to the 1st impassable barrier, shall be considered the same waterbody, except that border waters shall only include the portion inside New York:

- Lake Ontario in combination with the Lower Niagara River and the St. Lawrence River;
- Lake Erie in combination with the Upper Niagara River, Black Rock Canal, and waters of the Erie Barge Canal from the Upper Niagara River to Lock E35 in Lockport;
- Onondaga Lake and the Three Rivers complex, including the Seneca River downstream of the Erie Barge Canal Lock E24 and dam in Baldwinsville, the Oneida River downstream of the Caughdenoy Dam and Erie Barge Canal at Lock E23, and the Oswego River upstream of Lock 1 and the dam in Phoenix;

- Oneida Lake and the Erie Barge Canal downstream to Lock E23 and upstream to Lock E22, and the Oneida River downstream to Caughdenoy Dam;
- Mohawk River from the Barge Canal in Rome upstream to Delta Dam;
- Erie Barge Canal from Lock E22 east to Lock E6;
- Lake Champlain, including the Champlain Canal north of Lock 12;
- Hudson River from the Federal Dam at Troy to Bakers Falls in the City of Hudson Falls, and the Champlain Canal up to, but not above, Lock 7 in Fort Edward, and the Erie Barge Canal up to, but not above, Lock E6 in Waterford;
- Hudson River downstream from the Federal Dam at Troy to the Battery at the southern tip of Manhattan Island;
- Susquehanna River downstream of the dam in Oakland, Pennsylvania, and the Chenango River;
- Saranac Chain of Lakes from Lake Flower upstream to Barlett Carry Dam.

Purchased baitfish

Green list baitfish

The following baitfish are the only species that can be purchased and used in any waterbody (page 77) in New York where it is legal to use fish as bait.

- | | |
|--------------------------|----------------------|
| • Golden shiner | • Northern hogsucker |
| • Emerald shiner | • Margined madtom |
| • Common shiner | • Brindled madtom |
| • Spottail shiner | • Blacknose dace |
| • Banded killifish | • Longnose dace |
| • Fathead minnow | • White sucker |
| • Bluntnose minnow | • Creek chub |
| • Stonecat | • Fallfish |
| • Tadpole madtom | • Logperch |
| • Eastern silvery minnow | |
| • Northern redbelly dace | |

Baitfish Regulations

Other baitfish

The following baitfish may be purchased and only used in specified waters and their tributaries to the 1st impassable barrier.

- **Alewife:** Canandaigua Lake; Canadice Lake; Cannonsville Reservoir; Cayuga Lake; Cayuta Lake; Conesus Lake; Hemlock Lake; Waneta Lake; Hudson River downstream from Lock C4 and its associated dam in Stillwater to the Battery at the southern tip of Manhattan Island; Keuka Lake; Otisco Lake; Owasco Lake; Lake Ontario; Lake Erie; Lamoka Lake; Pepacton Reservoir; Seneca Lake; St. Lawrence River; Niagara River; Mohawk River, and all waters in Dutchess, Orange, Putnam, Rockland, Sullivan, Ulster, and Westchester counties.
- **Rainbow smelt:** Canadice Lake; Canandaigua Lake; Cayuga Lake; Cayuta Lake; Conesus Lake; First, Second, Third, Fourth, and Fifth lakes of the Fulton Chain; Hemlock Lake; Honeoye Lake; Keuka Lake; Lake Champlain; Lamoka Lake; Lake Ontario; Lake Erie; Owasco Lake; Seneca Lake; Star Lake (St. Lawrence County); Waneta Lake; the St. Lawrence River; and the Niagara River.
- **Mummichog:** Hudson River and the tidal portion of Hudson River tributaries downstream of the Federal Dam at Troy; and all waters in Nassau and Suffolk counties.
- **Blueback herring and Atlantic menhaden:** Hudson River downstream from Lock C4 and its associated dam in Stillwater to the Battery at the southern tip of Manhattan Island; and the Mohawk River and tributaries to the 1st barrier impassable by fish.
- **American eel:** Delaware River and tributaries to the 1st barrier impassable by fish, 9-inch minimum size limit; and the Hudson River downstream from the Federal Dam at Troy to the Battery at the southern tip of Manhattan Island, between 9 and 14 inches.

Use, possession, and transportation of purchased baitfish

Certified baitfish

- Certified baitfish are those that have been tested and found to be free of specified diseases.
- Certified baitfish purchased from a bait dealer can be transported overland in a motorized vehicle and used in any waterbody where it is legal to do so.
- For baitfish to be considered certified, the seller must provide a receipt that contains:
 - ▶ the seller's name,
 - ▶ date of sale,
 - ▶ the species of fish, and
 - ▶ the number of each species sold.

The buyer must retain that receipt while in possession of the baitfish.

- Baitfish without a receipt or with a receipt that is older than 10 days shall be considered uncertified bait.

Uncertified baitfish

- Uncertified baitfish are those that have not been tested to verify that they are free of specified diseases.
- Uncertified baitfish purchased from a bait dealer can only be used on the same body of water that they were collected in.
- Uncertified baitfish cannot be transported overland by a motorized vehicle (e.g., car) except within a designated overland transportation corridor.
- The seller of uncertified baitfish outside of an overland transportation corridor is required to provide the same receipt information as for certified baitfish and also include the name of the waterbody in which the uncertified bait fish can be used, and a warning to the purchaser that the baitfish may not be transported overland by motorized vehicle.

Collection, use, and transportation of personally harvested baitfish

- Any person who has a fishing license or is entitled to fish without a license may collect minnows (except carp, goldfish, or endangered or threatened species), killifish, mudminnows, darters, sticklebacks, stonecats, smelt, alewives, and suckers for personal use in hook-and-line fishing only (sale prohibited) by angling and with the gear types listed in the Gear for Taking Baitfish Table below. All other species must be immediately returned to the water.
- Special regulations associated with personally harvesting alewife and blueback herring in the Hudson River can be found on page 16.
- Transportation of personally harvested baitfish overland by a motorized vehicle is prohibited, except within a designated overland transportation corridor (page 80).

- Baitfish or other legally taken fish species intended to be used as bait may only be used in the same waterbody (page 77) from which they were caught for bait in hook-and-line fishing. These fish may only be used in a waterbody where it is legal to use fish as bait.
- Smelt, suckers, alewives, and blueback herring taken for human consumption only may be transported at any time.

Baitfish collection exceptions

- Possession or use of minnow traps and nets is prohibited on units of state land/ waters where the use or possession of baitfish is prohibited (see Special Regulations pages 7-67).
- In the Hudson River downstream of the Troy Dam and in Lake Champlain, Upper and Lower Saranac Lakes, Lake Clear (Franklin Co.), Chazy Lake, and their tributaries to the 1st barrier, smelt may be taken only by angling

GEAR FOR TAKING BAITFISH		
Gear	Time	Water
Seine or scap net: maximum size 36 square feet	Sunrise to sunset	All non-trout waters
Minnow trap: maximum length 20", maximum entrance diameter 1", must be marked with owner's name and address	Anytime	Waters open to baitfish use
Seine: maximum size 36 square feet	Anytime	Lakes Erie & Ontario, excluding their inlets, outlets, bays Niagara River Hudson River below Troy Dam
Cast net ¹ maximum 10 feet in diameter	Anytime	Hudson River below Troy Dam
In addition, alewives are the only fish that may be taken as follows:		
Gill nets: maximum length 25 feet, maximum area 200 square feet, maximum size 1" bar	Anytime	Canadice, Canandaigua, Cayuga, Hemlock, Keuka, Owasco, Otisco, and Seneca lakes.
Stunning may be used to collect stonecats. Stunning means tapping a stone with an implement or other stone.		
¹ The only place where cast nets may be used is in the Hudson River below the Troy Dam.		

Baitfish Regulations

Species that may not be used for bait

Carp, goldfish, lamprey larvae, round goby, European rudd, as well as species listed as endangered or threatened in New York State may not be used for bait.

Use of dead fish as bait

Any dead fish, or parts thereof, excluding eggs, that are legal to possess and are not prohibited for use as bait, that have been packaged for commercial sale and have been preserved by methods other than by freezing only (e.g., salted minnows), can be used in any waterbody where it is legal to use fish as bait and does not require a receipt. Each package of dead bait fish must be individually labeled, identifying the name of the packager/processor, the name of the species, the quantity of fish contained, and the means of preservation.

Restrictions on use and possession of marine baitfish

Baitfish collected in the Marine and Coastal District (page 68) may be transported overland only for use in the Marine and Coastal District in the following counties: Queens, Kings, Richmond, New York, Bronx, Suffolk, Nassau, Rockland, and Westchester.

Overland transportation corridors

Three defined overland transportation corridors were designated for the purposes of allowing the transport and use of uncertified baitfish by anglers in specific areas of the state. The three overland transportation corridors are intended to primarily serve anglers fishing three major waterbodies:

- the Lake Erie-Upper Niagara River;
- the Lower Niagara River-Lake Ontario-St. Lawrence River; and

- the Tidal Hudson River.

Uncertified baitfish are only allowed to be used on the same body of water where they were collected within these corridors.

Transportation of purchased uncertified baitfish within an Overland Transportation Corridor

Uncertified baitfish purchased from a bait dealer may be transported within a designated overland transportation corridor provided a receipt, issued by the seller and retained by the purchaser while in possession of the baitfish, contains

- the seller's name,
- date of sale,
- the species of fish,
- the number of each species sold,
- the waterbody the baitfish must be used in,
- the overland transportation corridor the baitfish must be transported within, and
- a warning that the baitfish may only be transported within that overland transportation corridor.

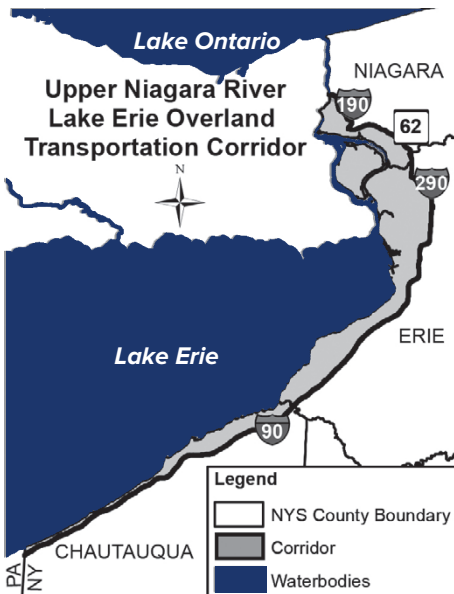
Transportation of personally collected baitfish within an Overland Transportation Corridor

Personally collected baitfish taken from a waterbody within an overland transportation corridor may be transported within that corridor. These baitfish may only be used in the same waterbody (page 77) they were collected in.

Designated Overland Transportation Corridors

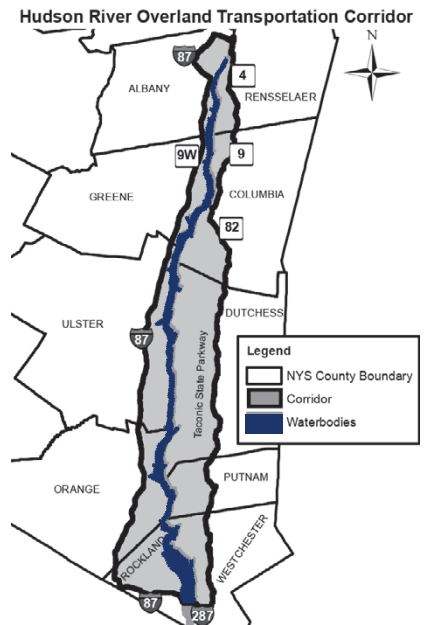
The three overland transportation corridors are defined as follows:

1. Upper Niagara River/Lake Erie Overland Transportation Corridor shall mean the geographical area associated with the New York portion of Lake Erie and the Upper Niagara River west of and including a line starting at I-90 at the Pennsylvania border, then continuing east to its intersection with I-290, then continuing north along I-290 to its intersection with State Rte. 62, then continuing west to its intersection with I-190, then north to its intersection with the Lower Niagara River. Baitfish collected from the New York portion of the Upper Niagara River/Lake Erie waterbody may be transported within this corridor.



2. Hudson River Overland Transportation Corridor shall mean the geographical area associated with the Hudson River south of the Federal Dam at Troy starting at the eastern shore of the Hudson River at the Federal Dam in Troy, continuing east on W. Glenn Ave. in Troy to its intersection with State Rte. 4, then continuing south on State Rte. 4 to its intersection with State Rtes. 9 & 20, then continuing easterly

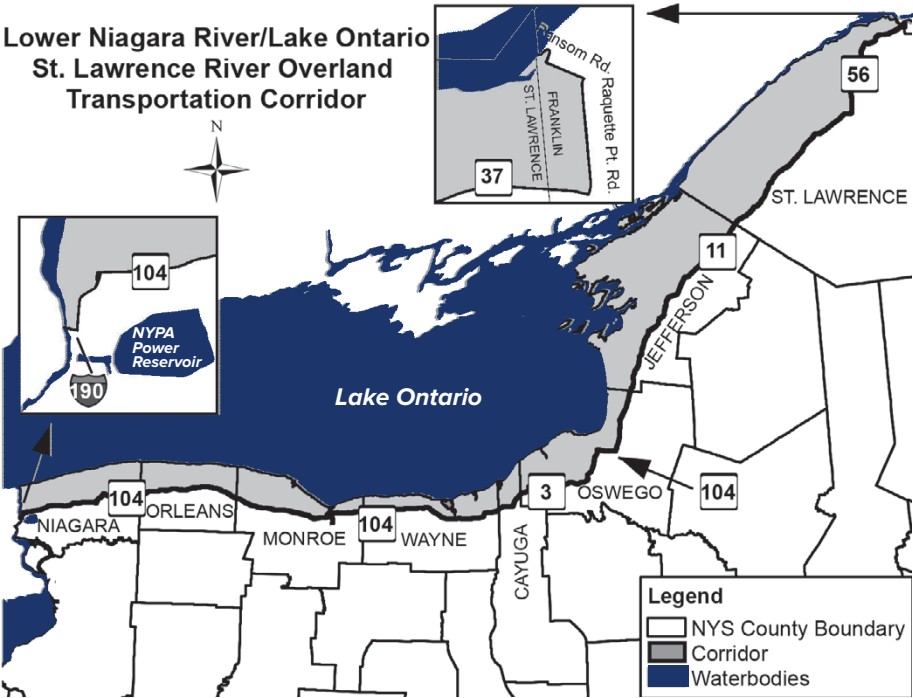
to its intersection with State Rte. 9, then continuing east on State Rte. 82, to its intersection with the Taconic State Parkway, then continuing south on the Taconic State Parkway to its intersection with the Sprain Brook Parkway, then continuing south on the Sprain Brook Parkway to its intersection with I-287, then continuing west on I-287 across the Mario M. Cuomo Bridge to I-87 North, then continuing north on I-87 to where State Rte. 9W crosses I-87 in Greene County, then continuing north on State Rte. 9W to where State Rte. 9W crosses I-87 in Albany County, then continuing north on I-87 to its intersection with State Rte. 7, then continuing east on State Rte. 7 to its intersection with I-787, then continuing north on I-787 to its intersection with Tibbets Ave., then continuing east on Tibbets Ave. to its intersection with Delaware Ave., then proceeding in a straight line to the west edge of the Troy Dam. Baitfish collected from the New York portion of the Tidal Hudson River waterbody may be transported within this corridor.



Baitfish Regulations

**3. Lower Niagara River/Lake Ontario/
St. Lawrence River Overland
Transportation Corridor** shall mean the geographical area associated with New York portion of the Lower Niagara River, Lake Ontario, and the St. Lawrence River starting at the intersection of I-190 and the Lower Niagara River, then continuing eastward to its intersection with State Rte. 104, then continuing eastward to its intersection with State Rte. 3, then continuing east on State Rte. 3 to its intersection with State Rte. 104, then continuing eastward on State Rte. 104 to its intersection with State Rte. 11,

then continuing north on State Rte. 11 to its intersection with State Rte. 56, then continuing north along State Rte. 56 to its intersection with State Rte. 37, then continuing east along State Rte. 37 to its intersection with Racquette Point Rd., then continuing north on Racquette Point Rd. to its intersection with Ransom Rd., and then continuing west on Ransom Rd. and terminating at the St. Lawrence River. Baitfish collected from the New York portion of the Lower Niagara River/Lake Ontario/St. Lawrence River waterbody may be transported within this corridor



License requirements

Everyone must have a valid fishing license in their possession while fishing or helping someone to fish except:

- Persons under 16 years of age;
- NYS-resident owners, lessees, and members of their immediate families occupying and cultivating farmlands, when fishing on their own lands;
- Persons holding farm fish pond licenses and members of their immediate families, when fishing on waters covered by their licenses;
- Resident patients at Dept. of Mental Health institutions and Dept. of Health rehabilitation hospitals, and inmates at Division of Youth rehabilitation centers. License exemptions must be requested for such persons through the hospital/institution by writing NYSDEC License Sales Unit, 625 Broadway, Albany, NY 12233-4790, or by emailing FW.Information@dec.ny.gov;
- When fishing on licensed fishing preserves.

Free licenses

The following individuals are eligible for a free fishing license and may obtain a license at any license issuing outlet:

- New York State residents who are legally blind and provide a doctor's note to the License Issuing Agent;
- New York State residents who are active service members of the NYS Organized Militia (i.e., National Guard), or U.S. Reserve Forces;
- New York State residents stationed outside of New York who are on full time active duty in the U.S. Armed Forces and are on leave in New York for no longer than 30 days;

- Resident patients at U.S. Department of Veteran's Affairs hospitals or state-funded facilities can obtain a free fishing license through their hospital or facility;
- Native Americans who are members of the Shinnecock and Poospatuck tribes or the Six Nations residing on reservations in New York State may obtain a free fishing license by contacting their reservation or DEC's License Sales Office at (518) 402-8843.

Residency

To qualify for an annual resident license, a person must live in New York State for more than 30 days immediately preceding the date of application. When purchasing a lifetime license, you must show proof of residency for one full year.

Land ownership in New York does not make you a resident. Residency is that place where a person maintains a fixed, permanent, and principal home (regardless of where temporarily located), such as where a person is registered to vote. If under 18, the residence of parents or legal guardian shall be deemed such person's residence. For a complete list of valid residency proof documents, please see www.dec.ny.gov/permits/95452.html#Res.

Active members of the U.S. Armed Forces stationed in New York and full-time college students in residence in the state during the school year (proof required) qualify for annual resident licenses.

License Information

License privileges

Persons holding a freshwater fishing license may take freshwater fish by angling, spearing, hooking, longbow, nets, traps, and tip-ups; take frogs by spearing, catching with the hands, or by use of a club or hook; and take baitfish for personal use, all as permitted by law or DEC.

- The holder of a license, tag, or stamp shall have such license, tag, stamp, or other valid proof (see below) on his/her/their person while exercising any privilege of that license.
- The holder of a license, tag, or stamp shall exhibit it on demand to any police officer, peace officer, or the owner, lessee, or other person in control of the lands or waters on which the license holder is present.
- No license or stamp authorizes the holder to trespass upon private lands or waters, or interfere with property belonging to another person.
- A freshwater fishing license does not allow for the taking of migratory marine fish. See Recreational Marine Fishing Registry (below).

Recreational Marine Fishing Registry

Anglers 16 years of age and older who fish in the Marine and Coastal District of New York (page 68) or for migratory marine species, such as striped bass, hickory shad, and river herring from all waters of the state, including the Hudson River and Delaware River, must enroll in the Recreational Marine Fishing Registry wherever licenses are sold (below).
For additional information concerning the Recreational Marine Fishing Registry, contact the DEC Division of Marine Resources at (631) 444-0430 or visit the DEC website at www.dec.ny.gov/permits/54950.html.

Free fishing days

During the following dates, anyone can fish the freshwaters of New York State and no license is required!

- June 25–26, 2022
- September 24, 2022
- November 11, 2022
- February 18–19, 2023

Since no license is required, it's the perfect time to take a friend or relative fishing.

For a list of DEC-sponsored Fishing Clinics, visit www.dec.ny.gov/outdoor/27123.html.

LICENSES	
Resident Annual	
Fishing (16–69) *	\$25
Fishing (70+) *	\$5
7-day (16+)	\$12
1-day (16+)	\$5
Fishing (military/disabled) **	\$5
Marine Registry *	\$0
Non-Resident Annual	
Fishing (16+) *	\$50
7-day (16+)	\$28
1-day (16+)	\$10
Marine Registry *	\$0
Lifetime Fishing (available to NYS residents only)	
Lifetime Fishing (0–69)	\$460
Lifetime Fishing (70+)	\$65
* Valid for 365 days after purchase or effective date provided to issuing agent.	
** Military Disabled persons with a 40% or more service-related disability annually pay \$5.00 for the first of the following 3 privileges: fishing, hunting, trapping. Subsequent purchases of the other 2 privileges are free within the calendar year. Questions should be directed to 518-402-8843.	

VALID PROOF OF FISHING LICENSE

License type Valid Proof of Fishing License

"Freshwater" Fishing License	License on official license paper (Valeron)	Hunt Fish NY App	Online printable license	8 Digit DEC License Transaction #	Plastic lifetime card	Adventure license
Recreational Marine Fishing Registry					N/A	N/A

Please do not laminate your license. The heat from this process will cause it to become unreadable.

LICENSE REQUIREMENTS FOR BORDER WATERS

Does a New York State fishing license entitle the holder to fish the out-of-state portion of waters listed below?

Water	State/Province	Yes/No
Lake Ontario	Ontario	No
Lake Erie	Ontario, Pennsylvania	No
St. Lawrence River	Ontario, Quebec	No
Niagara River	Ontario	No
Lake Champlain	Quebec	No
	Vermont	Yes ^a
Delaware River & West Branch Delaware River (along boundary)	Pennsylvania	Yes
Greenwood Lake	New Jersey	Yes
Indian Lake	Connecticut	Yes

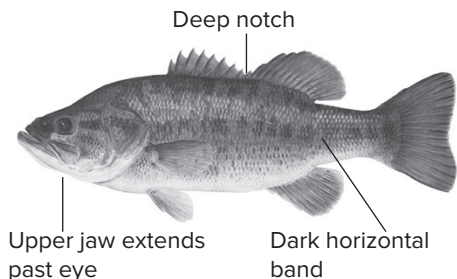
^a All Vermont portions of Lake Champlain, with the exception of The Inland Sea (including "The Gut"), Mallett's Bay, Missisquoi Bay and all rivers.

LICENSE OR REGISTRY REQUIREMENTS FOR FISHING IN THE TIDAL HUDSON RIVER OR MARINE AND COASTAL DISTRICT

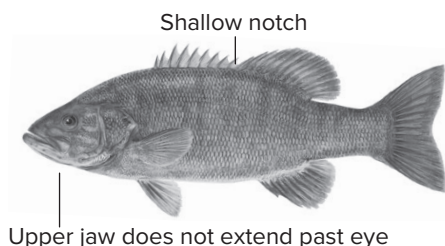
Location	Species Fishing For	License or Registry
North of Mario M. Cuomo Bridge	Freshwater Species	"Freshwater" Fishing License
	Migratory Marine Species	Recreational Marine Fishing Registry
South of Mario M. Cuomo Bridge (Marine and Coastal District)	All Species	

Warmwater Sportfish of New York

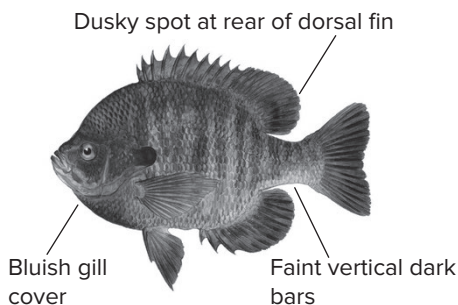
LARGEMOUTH BASS



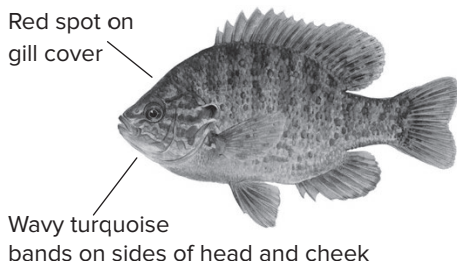
SMALLMOUTH BASS



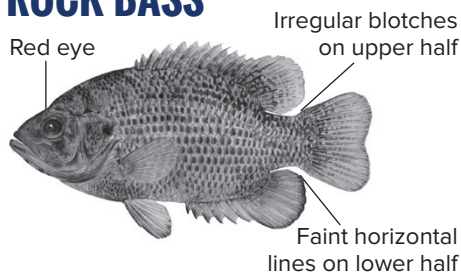
BLUEGILL



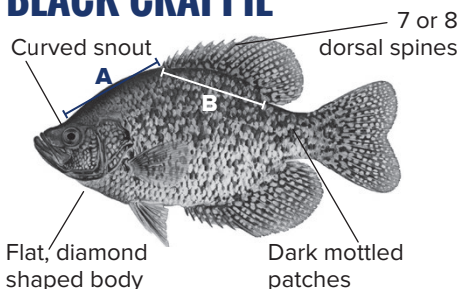
PUMPKINSEED



ROCK BASS

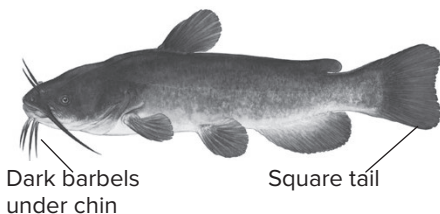


BLACK CRAPPIE

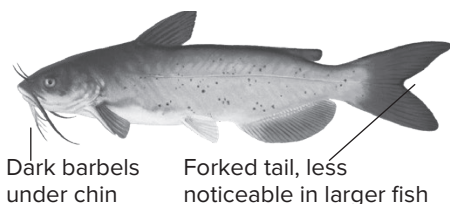


Note: White crappie (not shown) can be similar in coloration to black crappie. They can best be told apart by comparing the distance from the eye to the front of the dorsal fin (A) with the length of the base of the dorsal fin (B). In white crappie, B is significantly shorter than A, while the lengths are pretty much equal in black crappie. Black crappie also have 7–8 dorsal spines, while white crappie usually have 6 (rarely 7).

BROWN BULLHEAD

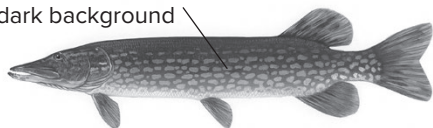


CHANNEL CATFISH

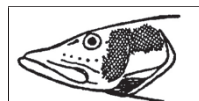


NORTHERN PIKE

Light spots on a dark background



T.Knepp/USFWS



Entire cheek and upper half of gill cover scaled



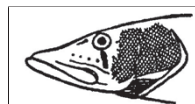
5 or fewer pores on underside of jaw

CHAIN PICKEREL

Chain-like markings on sides



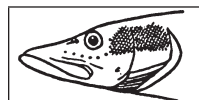
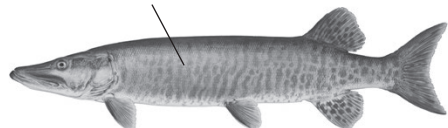
Dark vertical bar under eye



Cheek and gill cover fully scaled

MUSKELLUNGE

Dark vertical bars on light background



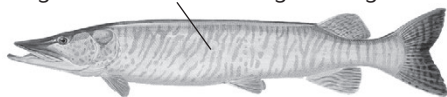
Upper half of cheek and gill cover scaled



6 to 9 pores on underside of jaw

TIGER MUSKELLUNGE

Irregular vertical bars on light background



Most of cheek and upper half of gill cover scaled



5 to 8 pores on underside of jaw

WALLEYE

Two separate dorsal fins

Black spot at rear edge of first dorsal fin



White tip on lower lobe of tail fin

SAUGER

Black spots on first dorsal fin

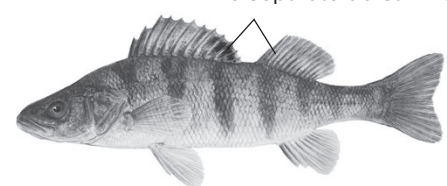
Lack white tip on lower lobe of tail fin



3-4 dark brown blotches on sides

YELLOW PERCH

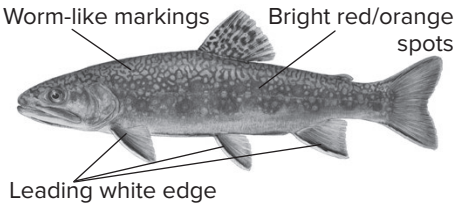
Two separate dorsal fins



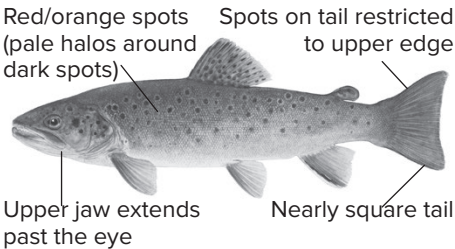
Dark vertical bars on yellow sides

Coldwater Sportfish of New York

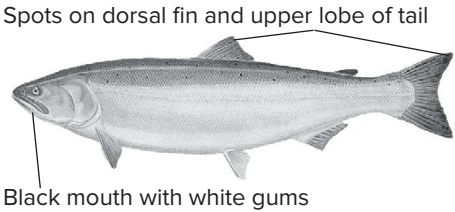
BROOK TROUT



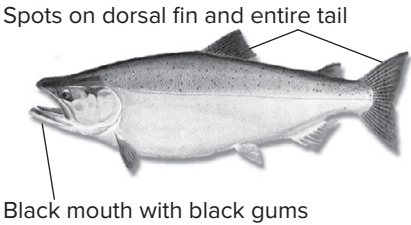
BROWN TROUT



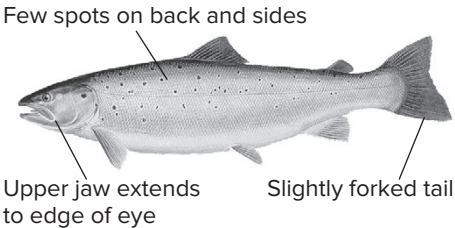
COHO SALMON*



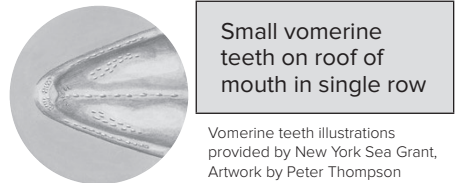
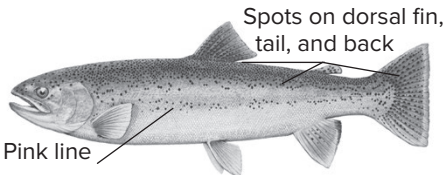
CHINOOK SALMON*



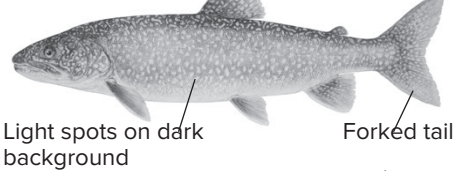
ATLANTIC SALMON



RAINBOW TROUT



LAKE TROUT



RAINBOW SMELT



* Pacific salmon (Coho and Chinook Salmon) are characterized by an anal fin that is longer along the body than it is away from the body

Angler Achievement Awards

HAVE YOU CAUGHT A BIG FISH LATELY?

If so, it may qualify for entry in our New York's Angler Achievement Awards Program. Awards are given for catching any of 42 eligible freshwater fish species. You can enter your catch in any of three categories—Annual Award, Catch and Release, and State Record. For more information, including an application form, scan the QR code below.



NEW YORK STATE FRESHWATER FISHING RECORDS (AS OF APRIL 1, 2022)				
Fish Species	Weight	Water	Angler	Catch Date
American Eel	7 lb. 14 oz.	Cayuga Lake, Seneca Co.	Larry Manino	7/25/1984
American Shad	9 lb. 4 oz.	Hudson River, Albany Co.	Robert Kubica	5/9/2007
Atlantic Salmon	24 lb. 15 oz.	Lake Ontario, Wayne Co.	Mike Dandino	4/5/1997
Black Bullhead	7 lb. 7 oz.	Mill Pond, Nassau Co.	Kevin Kelly	8/25/1993
Black Crappie	4 lb. 1 oz.	Lake Flavia, Cattaraugus Co.	William Wightman	5/6/2018
Bluegill	2 lb. 8 oz.	Kohlbach Pond, Broome Co.	Devin VanZandt	8/3/1992
Bowfin	13 lb. 8 oz.	Yanty Creek, Monroe Co.	Chase Soptelean	6/13/2021
Brook Trout	6 lb. 0 oz.	Silver Lake, Hamilton Co.	Richard Beauchamp	5/16/2013
Brown Bullhead	7 lb. 6 oz.	Lake Mahopac, Putnam Co.	Glenn Collacuro	8/1/2009
Brown Trout – Great Lakes	33 lb. 2 oz.	Lake Ontario, Oswego Co.	Tony Brown	6/10/1997
Burbot	16 lb. 12 oz.	Lake Ontario (Black River Bay), Jefferson Co.	Terrance Colwell	2/14/1991
Chain Pickerel	8 lb. 1 oz.	Toronto Reservoir, Sullivan Co.	John Bosland	2/13/1965
Channel Catfish	35 lb. 3 oz.	Lake Ontario, Jefferson Co.	Eric Scordo	4/29/2017
Chinook Salmon	47 lb. 13 oz.	Salmon River, Oswego Co.	Kurtis Killian	9/7/1991

Angler Achievement Awards

NEW YORK STATE FRESHWATER FISHING RECORDS (AS OF APRIL 1, 2022)				
Fish Species	Weight	Water	Angler	Catch Date
Cisco (Lake Herring)	5 lb. 7 oz.	Lake Lauderdale, Washington Co.	Albert Baratto	1/25/1990
Coho Salmon	33 lb. 7 oz.	Lake Ontario, Oswego Co.	Stephen Sheets Jr.	8/13/1998
Common Carp	50 lb. 6 oz.	Tomhannock Reservoir, Rensselaer Co.	Charles Primeau Sr.	5/12/1995
Fallfish	3 lb. 9 oz.	Susquehanna River, Tioga Co.	Jonathan McNamara	4/15/2009
Freshwater Drum	36 lb. 0 oz.	Oneida Lake, Oneida Co.	Jason Bair	6/16/2017
Hybrid Striped Bass	15 lb. 5 oz.	Lake Waccabuc, Westchester Co.	Bryan Colley	7/30/2004
Kokanee Salmon	3 lb. 6 oz.	Boy Scouts Clear Pond, Franklin Co.	Kenneth Shear	6/14/2002
Lake Trout – Great Lakes	41 lb. 8 oz.	Lake Erie, Chautauqua Co.	Jesse Wykstra	8/9/2003
Lake Whitefish	10 lb. 8 oz.	Lake Pleasant, Hamilton Co.	Randolph Smith	8/29/1995
Largemouth Bass	11 lb. 4 oz.	Buckhorn Lake, Otsego Co.	John Higbie	9/11/1987
Longnose Gar	14 lb. 10 oz.	Lake Champlain (South Bay), Washington Co.	Michael Gatus	8/18/2018
Muskellunge	69 lb. 15 oz.	St. Lawrence River, Jefferson Co.	Arthur Lawton	9/22/1957
Northern Pike	46 lb. 2 oz.	Great Sacandaga Lake, Fulton Co.	Peter Dubuc	9/15/1940
Pink Salmon	4 lb. 15 oz.	Lake Erie, Chautauqua Co.	Randy Nyberg	9/16/1985
Pumpkinseed	1 lb. 9 oz.	Indian Lake, Hamilton Co.	R. Kennard Mosher	7/19/1994
Pumpkinseed	1 lb. 9 oz.	Black River, Jefferson Co.	Jordan Tontarski	1/26/2020
Rainbow Trout – Great Lakes	31 lb. 3 oz.	Lake Ontario, Niagara Co.	Robert Wilson	8/14/2004
Redfin Pickerel	2 lb. 1 oz.	Lake Champlain, Essex Co.	Duane Gillespie	3/5/1989
Rock Bass	2 lb. 0 oz.	Port Bay (Lake Ontario), Wayne Co.	Jason Leusch	5/24/2020
Sauger	4 lb. 8 oz.	Lower Niagara River, Niagara Co.	Darrin Schwenkbeck	9/30/1990
Shorthead Redhorse	11 lb. 11 oz.	Salmon River, Oswego Co.	Joseph Williams	5/26/1996
Smallmouth Bass	8 lb. 4 oz.	St. Lawrence River, Jefferson Co.	Patrick Hildenbrand	8/28/2016

Angler Achievement Awards Program

NEW YORK STATE FRESHWATER FISHING RECORDS (AS OF APRIL 1, 2022)				
Fish Species	Weight	Water	Angler	Catch Date
Smallmouth Bass	8 lb. 4 oz.	Lake Erie, Chautauqua Co.	Andrew Kartesz	6/4/1995
Splake	13 lb. 8 oz.	Limekiln Lake, Herkimer Co.	Jonathan Simon	6/27/2004
Striped Bass	60 lb. 0 oz.	Hudson River, Orange Co.	Eric Lester	5/14/2014
Tiger Musky	35 lb. 8 oz.	Tioughnioga River, Broome Co.	Brett Gofgosky	5/25/1990
Walleye	18 lb. 2 oz.	St. Lawrence River, St. Lawrence Co.	Brian Hartman	5/5/2018
White Bass	3 lb. 8 oz.	Niagara River, Niagara Co.	Morgan Fonzi	5/6/2020
White Catfish	10 lb. 5 oz.	New Croton Reservoir, Westchester Co.	Joe Silicato	5/17/1998
White Crappie	4 lb. 7 oz.	Sleepy Hollow Lake, Greene Co.	Roy Isaac	8/21/2021
White Perch	3 lb. 1 oz.	Lake Ossaletta, Westchester Co.	Joseph Tansey	9/21/1991
White Sucker	5 lb. 8 oz.	Cold Brook, Steuben Co.	Joshua Wegner	4/14/2015
Yellow Perch	3 lb. 8 oz.	Lake Erie, Erie Co.	George Boice	4/28/1982

2022 Health Advice for Eating Sportfish

NYS State Department of Health's advice about eating sportfish (fish you catch) helps people reduce their exposures to chemicals and get the health benefits from eating fish.

Advice that Applies to all NYS Freshwaters (General Advice)

Everyone can eat up to four, half-pound meals of fish from waters without specific advice.

Waters with specific advice are listed alphabetically below and by region at www.health.ny.gov/fish.

Adirondack and Catskill Waters

There is also specific advice for Adirondack and Catskill Region waters, including popular fishing spots like Tupper Lake, Lewey Lake, and the Ashokan Reservoir.

View Adirondack and Catskill waters advice at www.health.ny.gov/fish.

Waters with Specific Advice For Adirondack and Catskill waters visit www.health.ny.gov/fish

Specific advice also applies to connected waters if there are no barriers to stop fish from moving upstream or downstream. This is because chemicals remain in fish when they move from one waterbody to another.



Women under 50 years of age and children under 15 years of age should not eat any fish from the waters listed below. All others should follow the advice below and can eat up to 4 meals/month of any fish not listed: New advice listed in blue.

Amawalk Reservoir (Westchester),
Largemouth & Smallmouth Bass over 16" 1 meal/month

Big Reed Pond (Suffolk),
Largemouth Bass 1 meal/month

Black River, from Carthage State Dam to Herrings Dam (Jefferson), Carp 1 meal/month

Bog Brook Reservoir (Putnam),
Walleye over 21" 1 meal/month

Boyd Corners Reservoir (Putnam),
Largemouth Bass over 16" & Walleye 1 meal/month

Breakneck Pond (Rockland), Largemouth Bass over 15" 1 meal/month

Buffalo River/Harbor (Erie), See Waters with Family Advice

Canadice Lake (Ontario), Lake Trout over 23" DON'T EAT; Brown Trout & smaller Lake Trout 1 meal/month

Carmans River, above Southaven Dam (Suffolk), See Waters with Family Advice

Cayuga Creek (Niagara), All fish DON'T EAT

Chenango River (Multiple), Walleye over 22" 1 meal/month

Chodikee Lake (Ulster),
Largemouth Bass over 15" 1 meal/month

Coldbrook Creek (Chemung), All fish DON'T EAT

Cross River Reservoir (Westchester),
Largemouth & Smallmouth Bass over 16" 1 meal/month

Delaware Park/Hoyt Lake (Erie), Carp 1 meal/month

Delta Lake (Oneida), Walleye over 23" 1 meal/month

Diverting Reservoir (Putnam), Walleye 1 meal/month

Dunham Reservoir (Rensselaer), Walleye DON'T EAT; Smallmouth Bass 1 meal/month

Dyken Pond (Rensselaer), Largemouth Bass 1 meal/month

East Branch Reservoir (Putnam), Walleye DON'T EAT

Eighteenmile Creek, upstream of Burt Dam (Niagara), All fish DON'T EAT

Eighteenmile Creek, downstream of Burt Dam (Niagara), See Waters with Family Advice

Erie Canal, between Lockport and Niagara River (Erie/Niagara), Carp 1 meal/month

Freeport Reservoir (Nassau), Carp 1 meal/month



Women under 50 years of age and children under 15 years of age should not eat any fish from the waters listed below. All others should follow the advice below and can eat up to 4 meals/month of any fish not listed: New advice listed in blue.

Fresh Pond, Hither Hills State Park (Suffolk), Largemouth Bass over 15" 1 meal/month

Goodyear Lake (Otsego), Walleye over 22" 1 meal/month

Grant Park Pond (Nassau), Carp 1 meal/month

Grasse River to Massena Power Canal (St. Lawrence), All fish DON'T EAT

Hall's Pond (Nassau), Carp & Goldfish DON'T EAT

Hoosic River (including Johnsonville & Schaghticoke Reservoirs) (Rensselaer), See Waters with Family Advice

Hudson River, upstream from Corinth Dam (Palmer Falls Dam) (Warren, Essex, Saratoga, Hamilton), follow Adirondack Regional Advice, www.health.ny.gov/fish/ADK

- **Corinth Dam (Palmer Falls Dam) to South Glens Falls Dam at Route 9 Bridge** (Warren, Saratoga), Smallmouth Bass over 14" up to 1 meal/month; Carp 1 meal/month

- **South Glens Falls Dam at Route 9 Bridge to Hudson Falls Dam at Bakers Falls** (Warren, Washington, Saratoga), All fish DON'T EAT

- **Hudson Falls Dam at Bakers Falls to Federal Dam at Troy** (Rensselaer, Albany, Washington, Saratoga), All fish Catch and Release fishing ONLY per DEC regulations. Take No Fish. Eat No Fish.

- **Federal Dam at Troy to Rip Van Winkle Bridge at Catskill** (Rensselaer, Albany, Columbia, Greene), Alewife, Blueback Herring, Rock Bass, Yellow Perch, 1 meal/month; All other fish (including Striped Bass and Walleye) DON'T EAT

- **Hudson River, Rip Van Winkle Bridge at Catskill to NYC Battery** (Bronx, Columbia, Dutchess, Greene, New York, Orange, Putnam, Rockland, Ulster, Westchester), Channel Catfish, Gizzard Shad, Walleye, White Catfish DON'T EAT; Con't in next column....

(Note: harvest/possession of Hudson River American Eel for food and American Shad is prohibited per DEC regulations).

Blue Crab meat 1 meal/week (~6 crabs) DON'T EAT tomalley; Striped Bass, Bluefish, Brown Bullhead, Carp, Largemouth Bass, Smallmouth Bass, White Perch, Rainbow Smelt, Atlantic Needlefish, Goldfish 1 meal/month

Kinderhook Lake (Columbia), American Eel 1 meal/month

Koppers Pond (Chemung), Carp 1 meal/month

Lake Capri (Suffolk), American Eel & Carp 1 meal/month

Lake Champlain, (Multiple), follow Adirondack Regional Advice, www.health.ny.gov/fish/ADK

- **Bay within Cumberland Head Southwest to Peru Boat Launch** (Clinton, Essex), American Eel & Yellow Perch DON'T EAT; All other fish ADK Regional Advice

Lake Ontario See Waters with Family Advice

Lake Welch (Rockland), Largemouth & Smallmouth Bass 1 meal/month

Lewiston Reservoir/Power Reservoir (Niagara), Carp DON'T EAT

Loft's Pond (Nassau), Carp & Goldfish 1 meal/month

Upper Massapequa Reservoir (Nassau), Carp & White Perch 1 meal/month

Massena Power Canal (St. Lawrence), Smallmouth Bass 1 meal/month

Mohawk River, from Cohoes Falls to Little Falls (Oneida, Herkimer, Montgomery, Schenectady, Albany, Saratoga), See Waters with Family Advice

Moodna Creek (Orange), Channel & White Catfish, Gizzard Shad, Smallmouth Bass, Walleye DON'T EAT; Blue Crab meat 1 meal/month (~6 crabs) DON'T EAT tomalley; All other fish 1 meal/month

Mud Creek (Oneida), Brown Trout & White Sucker DON'T EAT

Nassau Lake (Rensselaer), All fish DON'T EAT



Women under 50 years of age and children under 15 years of age should not eat any fish from the waters listed below. All others should follow the advice below and can eat up to 4 meals/month of any fish not listed: New advice listed in blue.

Newburgh Area Waters, Beaverdam Lake, Streams from Stewart State Forest to Beaverdam Lake, Crestview Lake, Lockwood Basin/Masterson Park Pond, Moodna Creek upstream of Firthcliff Dam, Recreation Pond, Silver Stream, Washington Lake (Orange), All fish DON'T EAT

Niagara River See Waters with Family Advice

Onondaga Lake (Onondaga), Largemouth & Smallmouth Bass over 15", Walleye, Carp, Channel Catfish & White Perch DON'T EAT; Brown Bullhead & Pumpkinseed 4 meals/month; smaller Smallmouth Bass, smaller Largemouth Bass & all other fish not listed 1 meal/month

Owasco Lake (Cayuga), See Waters with Family Advice

Oswego River, Varick Dam at Oswego (Lock #8) to upper dam at Fulton (Lock #2) (Oswego), Channel Catfish 1 meal/month

• **Mouth to Varick Dam at Oswego (Lock #8)** See Lake Ontario in Waters with Family Advice

Red Lake (Jefferson), Walleye 1 meal/month

Ridders Pond (Nassau), Goldfish DON'T EAT

Rushford Lake (Allegany), Walleye 1 meal/month

St. Lawrence River See Waters with Family Advice

Salmon River, mouth to Salmon River Reservoir (Oswego), Smallmouth Bass 1 meal/month (and Lake Ontario Advice)

Salmon River (Clinton), Same advice as Lake Champlain, Bay within Cumberland Head Southwest to Peru Boat Launch

Salmon River Reservoir (Oswego), Largemouth & Smallmouth Bass 1 meal/month

Sauquoit Creek, Mohawk River to Old Silk Mill Dam (near New Hartford/Paris town line) (Oneida), Brown Trout & White Sucker DON'T EAT

Saw Mill River, upstream of the flume at Mill Street in Yonkers (Westchester), American Eel 1 meal/month

Seneca River, downstream of Lock 24 at Baldwinsville (Onondaga), See Onondaga Lake advisories

Sheldrake River (Westchester), American Eel DON'T EAT; Goldfish 1 meal/month

Six Mile Creek, downstream of Gulf Road to mouth of Mohawk River (Oneida), All fish DON'T EAT

Skaneateles Creek See Waters with Family Advice

Smith Pond at Rockville Centre (Nassau), American Eel, Carp, Goldfish & White Perch 1 meal/month

Smith Pond at Roosevelt Park (Nassau), American Eel DON'T EAT; Carp & Goldfish 1 meal/month

Spring Lake, Middle Island (Suffolk), Carp & Goldfish DON'T EAT

Stark Falls Reservoir (St. Lawrence), Northern Pike over 26" DON'T EAT

Thayers Pond, Hoosick Falls Area (Rensselaer), All fish DON'T EAT

Threemile Creek (Oneida), White Sucker 1 meal/month

Titicus Reservoir (Westchester), White Perch 1 meal/month

Unadilla River (Multiple), Walleye over 22" 1 meal/month

Upper Twin Pond (Nassau), American Eel & Carp 1 meal/month

Valatie Kill, between County Rt. 18 and Nassau Lake (Rensselaer), All fish DON'T EAT

Valatie Kill, between Nassau Lake and Kinderhook Lake (Rensselaer & Columbia), American Eel, Bluegill & Redbreast Sunfish 1 meal/month

West Branch Reservoir (Putnam), Walleye 1 meal/month

Whitney Park Pond (Nassau), Carp & Goldfish 1 meal/month

Waters with Family Advice Waters with new advice listed in blue.

	Men 15 and Over Women 50 and Over	Women Under 50 Children Under 15
Buffalo River and Harbor (Erie)		
Carp, Channel Catfish	DON'T EAT	DON'T EAT
Brown Bullhead, Largemouth Bass, Small-mouth Bass	1 meal/month	1 meal/month
Rock Bass, Yellow Perch	4 meals/month	4 meals/month
All other fish	4 meals/month	1 meal/month
Carmans River , above Southaven Dam (Suffolk)		
American Eel	1 meal/month	DON'T EAT
Brown Bullhead	4 meals/month	4 meals/month
All other fish	4 meals/month	1 meal/month
Eighteenmile Creek , downstream of Burt Dam (Niagara)		
Brown Trout, Chinook Salmon, Coho Salmon, Rainbow Trout	1 meal/month	1 meal/month
All other fish	DON'T EAT	DON'T EAT
Hoosic River , including Johnsonville and Schaghticoke Reservoirs (Rensselaer)		
Bluegill, Yellow Perch	4 meals/month	4 meals/month
Brown Trout greater than 14", Carp	DON'T EAT	DON'T EAT
Brown Trout smaller than 14", Rainbow Trout, Smallmouth Bass	1 meal/month	1 meal/month
All other fish	4 meals/month	1 meal/month
Lake Erie and Niagara River , upstream of Niagara Falls (Erie, Niagara)		
Yellow Perch, Rudd, Rock Bass, Burbot, Brown Bullhead	4 meals/month	4 meals/month
Channel Catfish	1 meal/month	1 meal/month
Carp	DON'T EAT	DON'T EAT
All other fish	4 meals/month	1 meal/month
Lake Ontario and St. Lawrence River (excluding South Channel Bridge area) (Franklin, Jefferson, St. Lawrence)		
Brown Bullhead, Rainbow Smelt, Rock Bass, White Sucker, Yellow Perch	4 meals/month	4 meals/month
Lake Trout over 25" and Brown Trout over 20"	1 meal/month	1 meal/month
Carp	1 meal/month	DON'T EAT
Channel Catfish	1 meal/month	1 meal/month
Smaller Lake Trout and Brown Trout, All other fish (including Chinook and Coho Salmon)	4 meals/month	1 meal/month

Waters with Family Advice Waters with new advice listed in blue.

	Men 15 and Over Women 50 and Over	Women Under 50 Children Under 15
Mohawk River/Erie Canal between Fivemile Dam (downstream of Little Falls) and Cohoes Falls (Herkimer, Montgomery, Schenectady, Albany, Saratoga)		
Carp	DON'T EAT	DON'T EAT
Brown Bullhead, Bluegill, Blueback Herring, Rock Bass, Smallmouth Bass, Walleye, Yellow Perch	4 meals/month	4 meals/month
All other fish	4 meals/month	1 meal/month
Mohawk River/Erie Canal , between Lock E18 at Jacksonburg and Fivemile Dam downstream of Little Falls (Herkimer)		
Carp	DON'T EAT	DON'T EAT
Rock Bass	4 meals/month	4 meals/month
Walleye	1 meal/month	1 meal/month
All other fish	4 meals/month	1 meal/month
Mohawk River/Erie Canal , between Lock E20 at Whitesboro and Lock E18 at Jacksonburg (Herkimer, Oneida)		
Carp, Largemouth Bass, Smallmouth Bass, Tiger Muskellunge, White Sucker	DON'T EAT	DON'T EAT
Walleye	1 meal/month	1 meal/month
All other fish	4 meals/month	1 meal/month
Mohawk River/Erie Canal from Feeder Dam 1 on Mohawk River and Lock E21 at New London to Lock E20 at Whitesboro (Oneida)		
Carp	DON'T EAT	DON'T EAT
White Sucker, Yellow Perch	4 meals/month	4 meals/month
All other fish	4 meals/month	1 meal/month
Niagara River, downstream of Niagara Falls (Niagara)		
Same advice as Lake Ontario except Lake Trout		
Lake Trout	DON'T EAT	DON'T EAT
Owasco Lake (Cayuga)		
Smallmouth Bass, Walleye	1 meal/month	DON'T EAT
Rainbow Smelt, Rainbow and Brown Trout smaller than 20", and Yellow Perch smaller than 10"	4 meals/month	4 meals/month
Rainbow and Brown Trout over 20", Yellow Perch over 10", All other fish	4 meals/month	1 meal/month

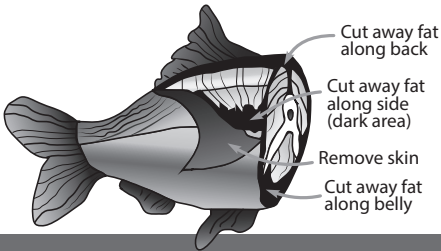
	Men 15 and Over Women 50 and Over	Women Under 50 Children Under 15
Skaneateles Creek, Skaneateles Lake Dam at Skaneateles to Seneca River (Onondaga, Cayuga)		
Brown and Rainbow Trout	1 meal/month	1 meal/month
All other fish	4 meals/month	4 meals/month
St. Lawrence River , from South Channel Bridge (including Turtle Creek Cove) downstream to north end of Raquette Point (Navigation Light Number 11) (St. Lawrence)		
All fish	DON'T EAT	DON'T EAT



To view all advice by region

Tips for Healthier Eating

- To reduce exposures to mercury, avoid or eat less largemouth and smallmouth bass, northern pike, pickerel, walleye and larger yellow perch, particularly in the Adirondack and Catskill regions.
- To reduce exposures to PCBs, dioxin, mirex, DDT, chlordane, and dieldrin, avoid or eat less American eel, bluefish, carp, lake trout, salmon (chinook, coho), striped bass, weakfish, white and channel catfish, and white perch because these fish tend to have higher levels of these contaminants. Follow the trim and skin recommendations in the diagram to further reduce these chemicals.
- When deciding which sportfish to eat, choose smaller fish within a species because they may have lower contaminant levels.
- Visit www.health.ny.gov/fish/tips for more helpful tips and recipes.



Cut the Fat to Cut PCBs

- PCBs are chemicals in the fat of some fish you catch.
- Don't pan-fry! Broil, grill or bake so fat drips away.
- Don't eat the tomalley (green stuff) in crabs.

More Information

New York State Department of Health
www.health.ny.gov/fish
 518-402-7800; 800-458-1158
 BTSA@health.ny.gov

For information on contaminants in sportfish:
DEC Bureau of Ecosystem Health
 518-402-8920

Environmental Conservation Police Officers

New York State has about 300 Environmental Conservation Officers (ECOs) and Investigators (ECIs) who work throughout the state, including New York City. ECOs spend most of their time patrolling within their assigned county.

The assistance of the public is essential to the effective enforcement of State environmental laws and regulations. If you observe someone violating Environmental Conservation Law or see the results of a violation, REPORT IT! Poachers and polluters are thieves, stealing from you, our fellow anglers, and future generations. Those who pollute our air or water, destroy our environment, or ignore fish and wildlife laws are criminals.

Contact an Environmental Conservation Police Officer (ECO)

For general questions, call 1-877-457-5680. You will speak with a dispatcher who will assist you or connect you to an ECO. For best service, let them know the area you are calling from or the area your question is about.

Report All Poachers and Polluters

Call 1-844-DEC-ECOS (844-332-3267). You will speak to a dispatcher who will assist you in filing a complaint. You may ask to have your name kept confidential, or you may ask to file the complaint without leaving a name (anonymously). Complaints may also be reported online at www.dec.ny.gov/regulations/67751.html.

Complaints are forwarded to an ECO for investigation. The more detailed information you provide, the more likely the violator will be apprehended. Try to remember the "who, what, where, when, and how" of the event.

- **Keep a distance from the violator.** Do not approach or attempt to confront suspects. They may be dangerous, destroy evidence, or simply evade officers if forewarned.
- **Who did it?** Provide names, ages, sex, height, weight, clothing or vehicle descriptions, and other details.
- **What occurred?** What exactly do you think is the nature of the violation? Examples — taking over limit of fish, snagging, illegal netting, fishing out of season, trespassing.
- **When did it occur?** Provide dates and times. Is it still in progress, ongoing, or something yet to happen? Examples—happening right now, happens every Friday night.
- **Where did it occur?** Provide street addresses, town/county, name of stream, river, or pond, GPS location. Many fishing violations occur on large waterways, so specific locations are valuable. Examples — at the north end of the spillway on Smith Creek Dam, near red buoy 32 on Reynolds Channel.
- **How did it occur?** What methods or circumstances were used to commit the violations? Provide any other information the ECO may find useful.

Environmental Conservation Officer Rosters

For the current listing of Environmental Conservation Officers by Region, please visit <https://www.dec.ny.gov/about/28461.html>



FIND US ON DEC'S WEBSITE



<https://www.dec.ny.gov/outdoor/fishing.html>

HUNTFISHNY APP



Fishing & hunting information at your fingertips and a worry-free way of carrying your sporting license.

Download today from the [App Store](#) or [Google Play Store](#)!

THE FISHING LINE



Hooking anglers up with information on fishing and fisheries management across New York State. Sign up today by scanning the QR code above or visiting www.dec.ny.gov/outdoor/fishing.html.

HIGHLIGHTS OF CHANGES

- New statewide regulation for rainbow and brown trout in lakes and ponds: The season will now be open year-round, with a 5 fish daily limit, any size with no more than 2 longer than 12" harvest rule
- Statewide Atlantic salmon regulations now allow for a year-round open season
- Ice fishing is permitted on all waters in New York unless specifically prohibited, with the exception of Essex, Franklin, Fulton, Hamilton, Herkimer, Lewis, St. Lawrence, Warren, and Washington counties.
- New hard dates for season openers as follows: May 1 – Walleye, Northern Pike, Pickerel and Tiger Muskellunge, June 1 – Muskellunge, June 15 – Largemouth and Smallmouth Bass
- 5 fish daily limit for walleye in Oneida Lake
- Statewide Sunfish daily harvest limit of 25 fish
- Statewide Crappie 10" minimum size limit