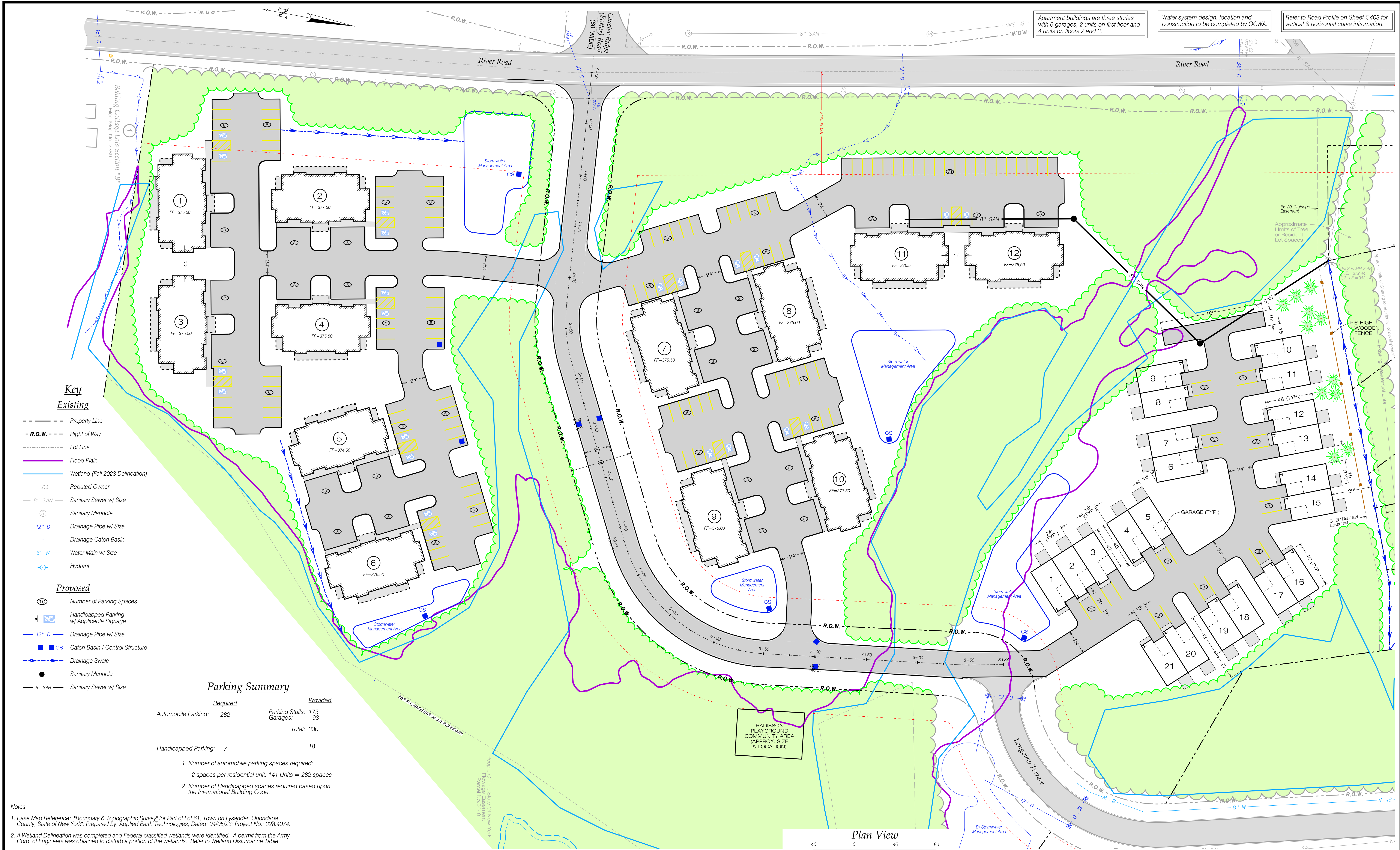


Apartment buildings are three stories with 6 garages, 2 units on first floor and 4 units on floors 2 and 3.

Water system design, location and construction to be completed by OCWA.

Refer to Road Profile on Sheet C403 for vertical & horizontal curve information.



Key

- Existing**
- - - Property Line
 - - - R.O.W. - - - Right of Way
 - - - Lot Line
 - Flood Plain
 - Wetland (Fall 2023 Delineation)
 - R/O Reputed Owner
 - 8" SAN Sanitary Sewer w/ Size
 - ⊙ Sanitary Manhole
 - 12" D Drainage Pipe w/ Size
 - Drainage Catch Basin
 - 6" W Water Main w/ Size
 - ⊕ Hydrant
- Proposed**
- ⓪ Number of Parking Spaces
 - ⓪ Handicapped Parking w/ Applicable Signage
 - 12" D Drainage Pipe w/ Size
 - CS Catch Basin / Control Structure
 - Drainage Swale
 - Sanitary Manhole
 - 8" SAN Sanitary Sewer w/ Size

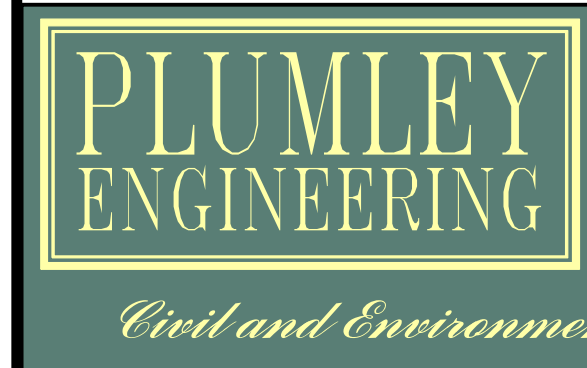
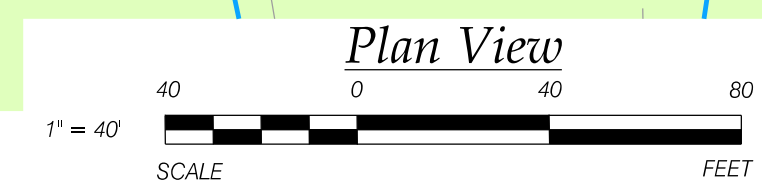
Parking Summary

Required	Provided
Automobile Parking: 282	Parking Stalls: 173
	Garages: 93
	Total: 330
Handicapped Parking: 7	18

1. Number of automobile parking spaces required: 2 spaces per residential unit: 141 Units = 282 spaces
2. Number of Handicapped spaces required based upon the International Building Code.

Notes:

1. Base Map Reference: "Boundary & Topographic Survey" for Part of Lot 61, Town on Lysander, Onondaga County, State of New York; Prepared by: Applied Earth Technologies; Dated: 04/05/23; Project No.: 328.4074.
2. A Wetland Delineation was completed and Federal classified wetlands were identified. A permit from the Army Corp. of Engineers was obtained to disturb a portion of the wetlands. Refer to Wetland Disturbance Table.
3. According to The National Flood Insurance Program "FIRM - Flood Insurance Rate Map" for the Town of Lysander, (Panel No. 36067C0058F), dated: 11/04/2016, portions of the site are located in the 100 year flood plain.



PLUMLEY ENGINEERING, P.C.
8232 LOOP ROAD
BALDWINVILLE, NY 13027
TELEPHONE: (315) 638-8587
FAX: (315) 638-9740
WWW.PLUMLEYENG.COM

REVISIONS:	DATE:	BY:

These plans & specifications are the property of Plumley Engineering, P.C. These documents may not be copied, reproduced, used or implemented in any way, in part or in whole, without the written consent of Plumley Engineering, P.C. All common law rights of copyright are hereby specifically reserved.

PROJECT: **LONGVIEW APARTMENTS**
CLIENT: **GREENTREE REALTY GROUP**
LOCATION: **TOWN OF LYSANDER, ONONDAGA COUNTY, NEW YORK**

DWG. TITLE: **FINAL SITE PLAN**
Note: No alteration permitted hereon except as provided under Section 7209 Subdivision 2 of the New York State Education Law.

PROJECT No.: 2023018
FILE NAME: C201A
SCALE: 1" = 40'
DATE: March 2024
ENGD BY: JFC
DRAWN BY: JLL
CHECKED BY: JFC

SHEET No.: **C201**
© Plumley Engineering, P.C. 2023